



## Cat nr AE00101

## Product Datasheet

Recombinant Mouse Antibody, clone rACPP/1338 to:

### ACPP, Prostatic Acid Phosphatase

5'-nucleotidase; Acid phosphatase, prostate; Ecto-5'-nucleotidase; Prostatic Acid Phosphatase; Thiamine monophosphatase; 5'-NT; ACP-3; ACP3; TM-PAP; TMPase

Cellular localization                      Cytoplasm

Official Symbol (Gene)                      ACP

GenelD    55

SwissProt    P15309

Confirmed Applications	IHC
Positive controls	PC12, prostate, prostate carcinoma
Aeonian Rating©	90

Purification                                      By Protein G from bioreactor concentrate

Formulation                                       200ug IgG/ml in PBS, 0.05% BSA, 0.05% azide (20ug or 100ug)

1mg IgG/ml in PBS (100ug or contact us for quotation)

Amount     20ug                                       100ug

Isotype    Mouse IgG1, kappa

Confirmed species reactivity                      Human

Immunogen    Recombinant full-length human ACP protein

Epitope    Unknown

**Storage instructions**                                      Avoid repeated freeze/thaw cycles. For long term storage, keep small aliquots at -20C or -80C and keep one aliquot at 4C for daily experimentations. Azide will preserve antibody at 4C for 6-12 months, when kept away from direct sun light.

**Expiration**    Integrity warranted for 24 months after purchase when handled and stored according to instructions, see below.

**Warranty**    This product is only warranted for the specifications as described in this product sheet and only when the product is handled and stored according to instructions. User should validate this antibody in the application and tissue/cell type as required, after confirmation of integrity upon receipt is obtained by reproducing the performance as described below. Should such confirmation not be attempted, any warranty is void. In case of non-conformance, user needs to contact us immediately for replacement or refund.

**Liability**    This product is for in vitro research use only. Any other applications, such as diagnostics or therapeutics, or in vivo experiments, and the validation of this product therein, are solely at the responsibility of the buyer/user.

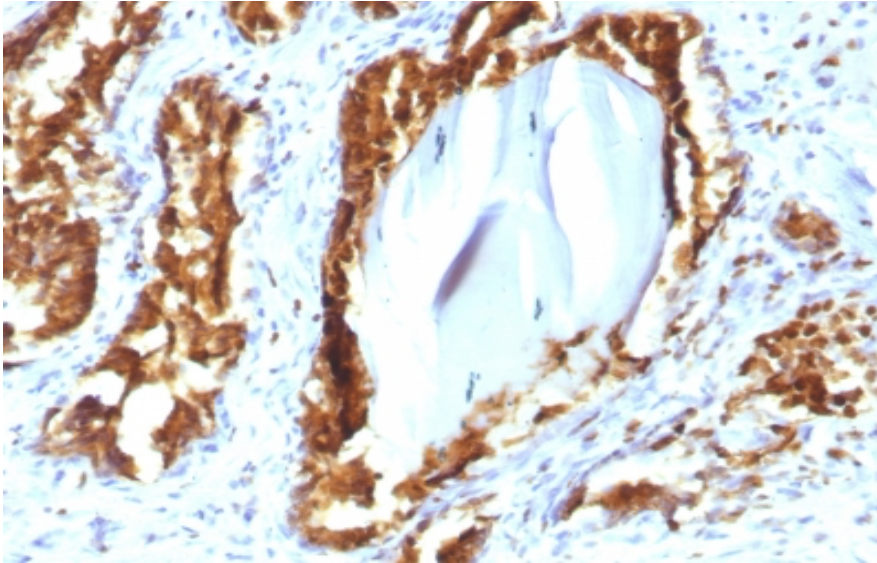
Product performance                                      see next page

**Product data:**

**ImmunoHistoChemistry (IHC):**

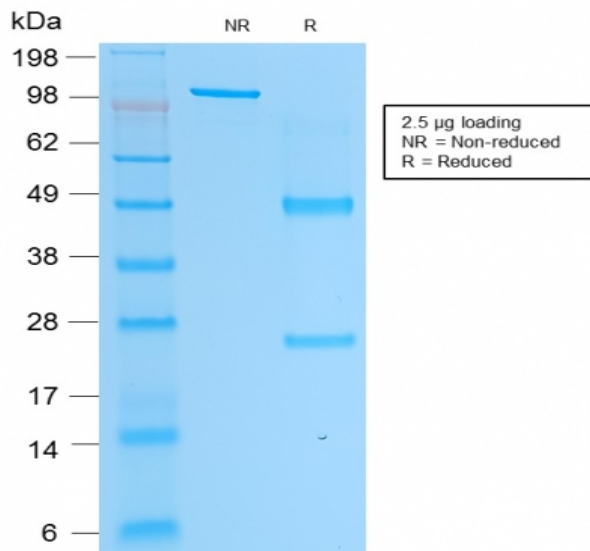
This product was successfully used to stain epithelial cells in human prostate carcinoma sections.

Recommended concentration: 0.3-1ug/ml



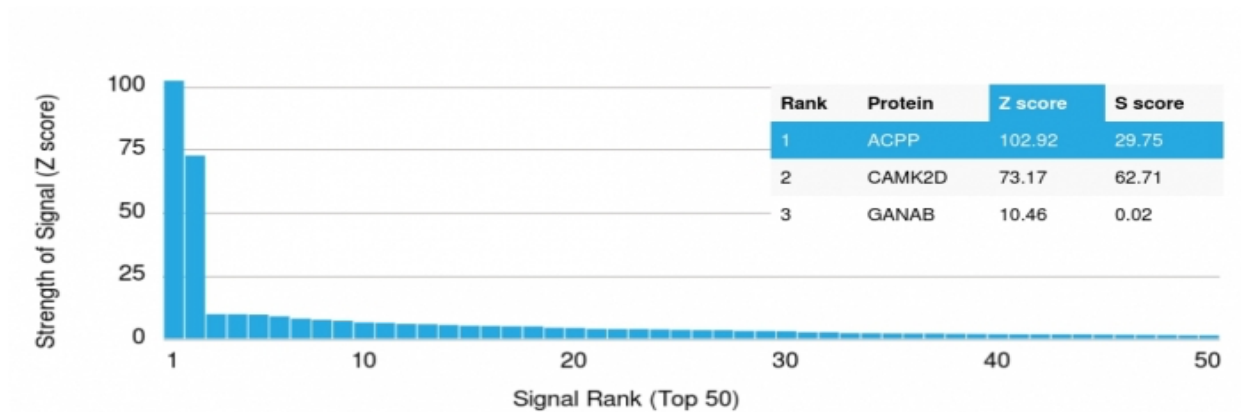
Formaldehyde-fixed, paraffin-embedded human prostate carcinoma stained with ACPP Mouse Recombinant Antibody AE00101 at 0.5-1ug/ml for 30 minutes at RT. Epitope retrieval: Boiling at pH6 for 10-20 min followed by 20 min cooling. DAB staining by HRP polymer.

**SDS-PAGE Analysis of Purified ACPP Mouse Recombinant Antibody AE00101. Confirmation of Purity and Integrity of Antibody.**



Integrity of the purified antibody AE00101 under non-reduced and reduced conditions, showing entire IgG at around 100kDa (NR) and intact heavy and light chains at 50kDa and 25kDa resp. (R).

Specificity and selectivity of AE00101 to ACPD were tested against >19,000 full-length human proteins on a human protein array. A protein BLAST search against H. sapiens revealed no closely related other proteins.



Cross-reactivity assessment of ACPD Mouse Recombinant Antibody AE00101 (1ug/ml) on CDI's Protein Array containing more than 19,000 full-length human proteins.

The Z-score represents the strength of a signal that an antibody (through a fluorophore-tagged secondary reagent) produces when binding to a particular protein on the array. Z-scores are in units of standard deviations (SD's) above the mean value of all signals generated on that array. When Z-scores are arranged in descending order, the difference between two successive values will be the S-score for the first. Thus, the S-score represents the relative specificity of the antibody to its intended target. An antibody is considered specific to its intended target, when it has an S-score of at least 2.5. For example, if an antibody binds to intended protein X with a Z-score of 43 and to the cross-reacting protein Y with a next Z-score of 14, then the S-score for the antibody to intended target X equals 29 (43-14).