



## Cat nr AE00152

## Product Datasheet

Recombinant Rabbit Antibody, clone ADFP/2755R to:

### PLIN2, Perilipin-2

Adipophilin; Adipose differentiation-related protein; Perilipin-2; ADFP; ADRP

Cellular localization ER, plasma membrane, cytoplasmic lipid droplets.

Official Symbol (Gene) PLIN2  
 GenelD 123  
 SwissProt Q99541

Confirmed Applications	IHC, WB
Positive controls	HepG2, JAR, liver, adrenal gland, cerebellum.
Aeonian Rating©	83
Purification	By Protein A from bioreactor concentrate
Formulation	<input type="checkbox"/> 200ug IgG/ml in PBS, 0.05% BSA, 0.05% azide (20ug or 100ug) <input type="checkbox"/> 1mg IgG/ml in PBS (100ug or contact us for quotation)
Amount	<input type="checkbox"/> 20ug <input type="checkbox"/> 100ug
Isotype	Rabbit IgG
Confirmed species reactivity	Human
Immunogen	Recombinant human Perilipin-2 protein fragment, approx. aa 249-376 (exact sequence is proprietary).
Epitope	Within aa 249-376 region

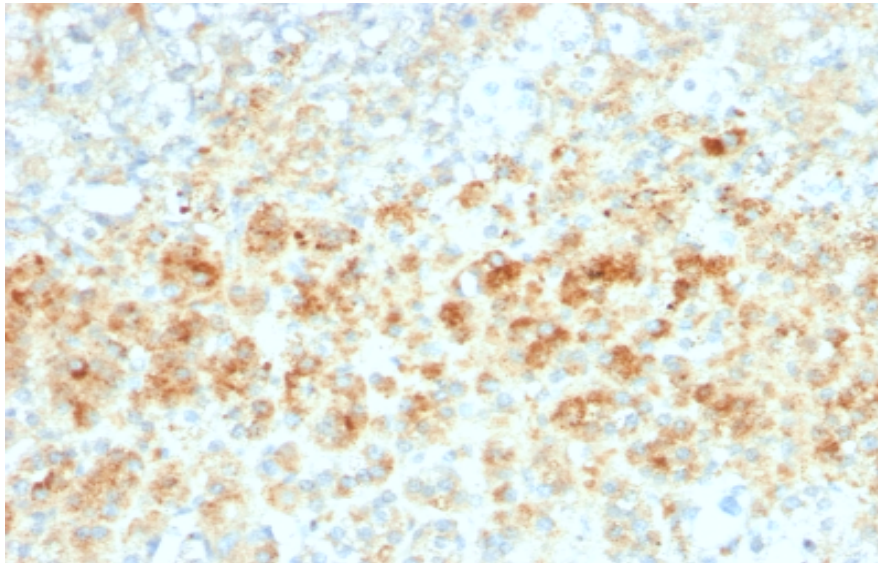
Storage instructions	Avoid repeated freeze/thaw cycles. For long term storage, keep small aliquots at -20C or -80C and keep one aliquot at 4C for daily experimentations. Azide will preserve antibody at 4C for 6-12 months, when kept away from direct sun light.
Expiration	Integrity warranted for 24 months after purchase when handled and stored according to instructions, see below.
Warranty	This product is only warranted for the specifications as described in this product sheet and only when the product is handled and stored according to instructions. User should validate this antibody in the application and tissue/cell type as required, after confirmation of integrity upon receipt is obtained by reproducing the performance as described below. Should such confirmation not be attempted, any warranty is void. In case of non-conformance, user needs to contact us immediately for replacement or refund.
Liability	This product is for in vitro research use only. Any other applications, such as diagnostics or therapeutics, or in vivo experiments, and the validation of this product therein, are solely at the responsibility of the buyer/user.

Product performance see next pages

**Product data:**

**ImmunoHistoChemistry (IHC):**

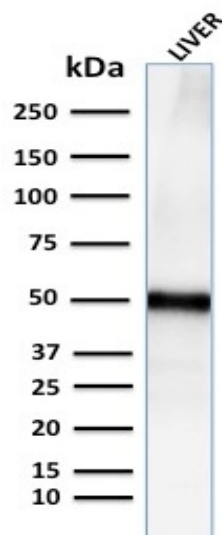
This product was successfully used to stain lipid droplet-rich zona fasciculata of human adrenal gland sections. Recommended concentration: 1-3ug/ml



Formaldehyde-fixed, paraffin-embedded human adrenal gland stained with PLIN2 Recombinant Rabbit Antibody AE00152 at 1-2ug/ml for 30 minutes at RT. Epitope retrieval: Boiling at pH6 for 10-20 min followed by 20 min cooling. DAB staining by HRP polymer.

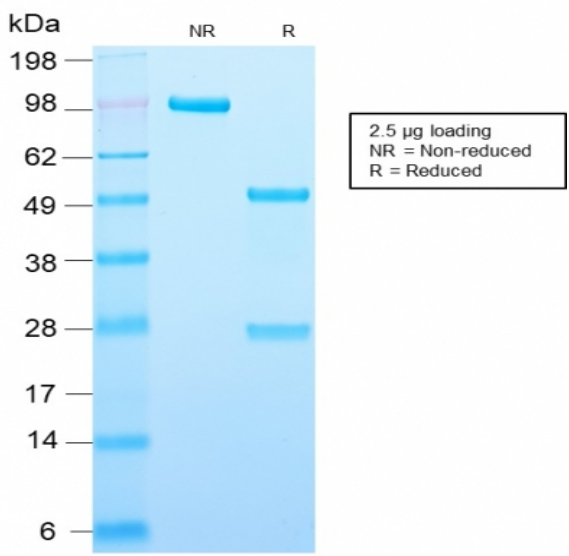
**Western Blot (WB):**

This product was successfully used to stain an approx. 50kDa band in human liver lysates. Recommended concentration: 1-3ug/ml



Western Blot of a human liver lysate (30ug) stained with PLIN2 Rabbit Recombinant Antibody AE00152 at 1ug/ml (1h at ambient temp). ECL staining by HRP.

SDS-PAGE Analysis of Purified PLIN2 Recombinant Rabbit Antibody AE00152. Confirmation of Purity and Integrity of Antibody.



Integrity of the purified antibody AE00152 under non-reduced and reduced conditions, showing intact IgG at around 100kDa (NR) and intact heavy and light chains at 50kDa and 25kDa resp. (R).