



Cat nr AE00153

Product Datasheet

Recombinant Rabbit Antibody, clone WT1/1434R to:

WT1, Wilms tumor 1

Wilms tumor 1; Wilms' tumor 1; AWT1; GUD; NPHS4; WAGR; WIT-2; WT33

Cellular localization Nucleus

Official Symbol (Gene) WT1
GenelD 7490
SwissProt P19544

Confirmed Applications IHC
Positive controls K562, Wilm's Tumor, mesothelioma, fetal kidney, kidney and a subset of hematopoietic cells
Aeonian Rating© 80

Purification By Protein G from bioreactor concentrate
Formulation 200ug IgG/ml in PBS, 0.05% BSA, 0.05% azide (20ug or 100ug)
 1mg IgG/ml in PBS (100ug or contact us for quotation)
Amount 20ug 100ug
Isotype Rabbit IgG
Confirmed species reactivity Human, rat
Immunogen Recombinant human full-length WT1 protein

Epitope Unknown

Storage instructions Avoid repeated freeze/thaw cycles. For long term storage, keep small aliquots at -20C or -80C and keep one aliquot at 4C for daily experimentations. Azide will preserve antibody at 4C for 6-12 months, when kept away from direct sun light.

Expiration Integrity warranted for 24 months after purchase when handled and stored according to instructions, see below.

Warranty This product is only warranted for the specifications as described in this product sheet and only when the product is handled and stored according to instructions. User should validate this antibody in the application and tissue/cell type as required, after confirmation of integrity upon receipt is obtained by reproducing the performance as described below. Should such confirmation not be attempted, any warranty is void. In case of non-conformance, user needs to contact us immediately for replacement or refund.

Liability This product is for in vitro research use only. Any other applications, such as diagnostics or therapeutics, or in vivo experiments, and the validation of this product therein, are solely at the responsibility of the buyer/user.

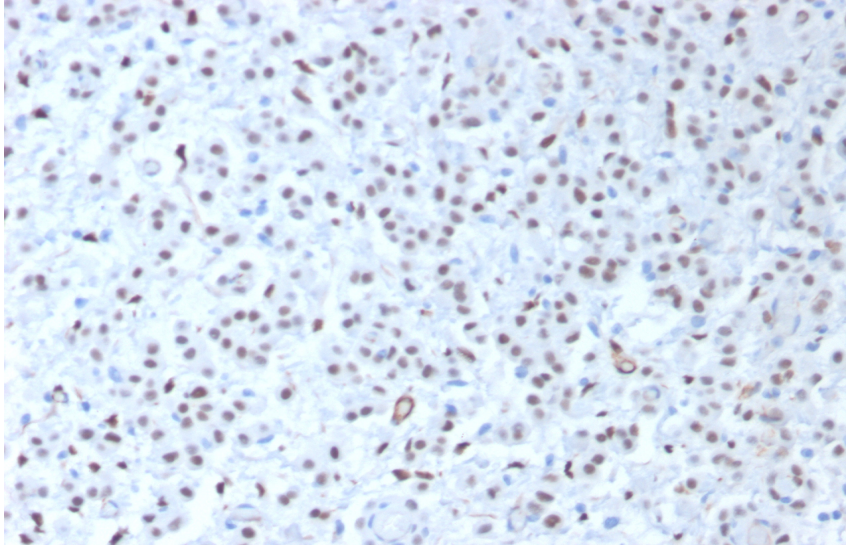
Product performance see next pages

Product data:

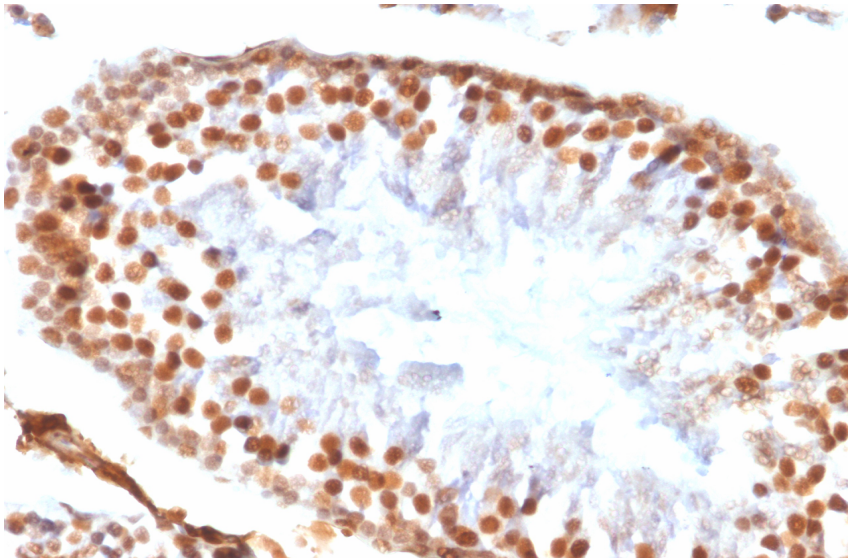
ImmunoHistoChemistry (IHC):

This product shows nuclear staining in sections of human mesothelioma and in rat testis sections.

Recommended concentration: 1-3ug/ml

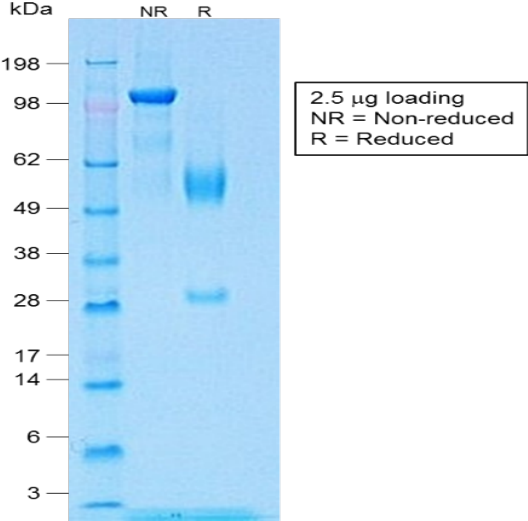


Formaldehyde-fixed, paraffin-embedded human mesothelioma stained with WT1 Recombinant Rabbit Antibody AE00153 at 1-2ug/ml for 30 minutes at RT. Epitope retrieval: Boiling at pH6 for 10-20 min followed by 20 min cooling. DAB staining by HRP polymer.



Formaldehyde-fixed, paraffin-embedded rat testis stained with WT1 Recombinant Rabbit Antibody AE00153 at 1-2ug/ml for 30 minutes at RT. Epitope retrieval: Boiling at pH6 for 10-20 min followed by 20 min cooling. DAB staining by HRP polymer.

SDS-PAGE Analysis of Purified WT1 Recombinant Rabbit Antibody AE00153. Confirmation of Purity and Integrity of Antibody.



Integrity of the purified antibody AE00153 under non-reduced and reduced conditions, showing intact IgG at around 100kDa (NR) and intact heavy and light chains at 55kDa and 30kDa resp. (R).