



### Cat nr AE00175

Mouse Monoclonal Antibody, clone FTL/1389 to:

### FTL, Ferritin Light Chain

Ferritin L subunit; LFTD; NBIA3

Cellular localization                      Cytoplasm and secreted

Official Symbol (Gene)                      FTL  
 GenelD    2512  
 SwissProt     P02792

Confirmed Applications                      IHC, PA, WB  
 Positive controls                              HepG2, HeLa, HL60, pancreas, liver, cerebellum, testis

Aeonian Rating©                              81

Purification                                      By Protein G from bioreactor concentrate  
 Formulation                                       200ug IgG/ml in PBS, 0.05% BSA, 0.05% azide (20ug or 100ug)  
      1mg IgG/ml in PBS (100ug or contact us for quotation)  
 Amount     20ug                                       100ug  
 Isotype    Mouse IgG1  
 Confirmed species reactivity              Human  
 Immunogen                                        Recombinant fragment around aa 38-165 of human FTL protein (exact sequence is proprietary)  
 Epitope    Within aa 38-165 region

Storage instructions                            Avoid repeated freeze/thaw cycles. For long term storage, keep small aliquots at -20C or -80C and keep one aliquot at 4C for daily experimentations. Azide will preserve antibody at 4C for 6-12 months, when kept away from direct sun light.

Expiration                                        Integrity warranted for 24 months after purchase when handled and stored according to instructions, see below.

Warranty    This product is only warranted for the specifications as described in this product sheet and only when the product is handled and stored according to instructions. User should validate this antibody in the application and tissue/cell type as required, after confirmation of integrity upon receipt is obtained by reproducing the performance as described below. Should such confirmation not be attempted, any warranty is void. In case of non-conformance, user needs to contact us immediately for replacement or refund.

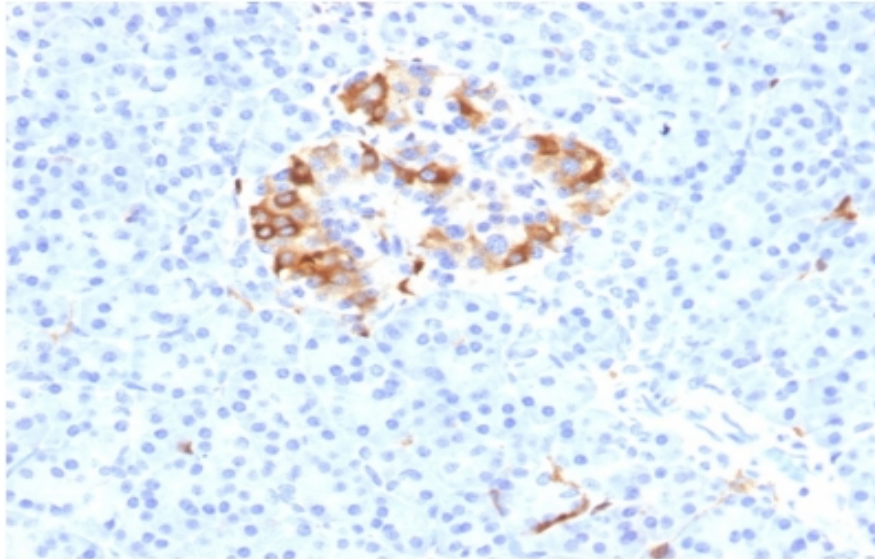
Liability    This product is for in vitro research use only. Any other applications, such as diagnostics or therapeutics, or in vivo experiments, and the validation of this product therein, are solely at the responsibility of the buyer/user.

Product performance                            see next pages

**Product data:**

**ImmunoHistoChemistry (IHC):**

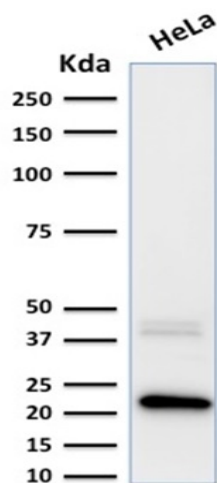
This product shows cytoplasmic staining in select cells of the islets of Langerhans in human pancreas sections. Recommended concentration: 0.1-0.3ug/ml



Formaldehyde-fixed, paraffin-embedded human pancreas stained with FTL Mouse Monoclonal Antibody AE00175 at 0.1-0.2ug/ml for 30 minutes at RT. Epitope retrieval: Boiling at pH6 for 10-20 min followed by 20 min cooling. DAB staining by HRP polymer.

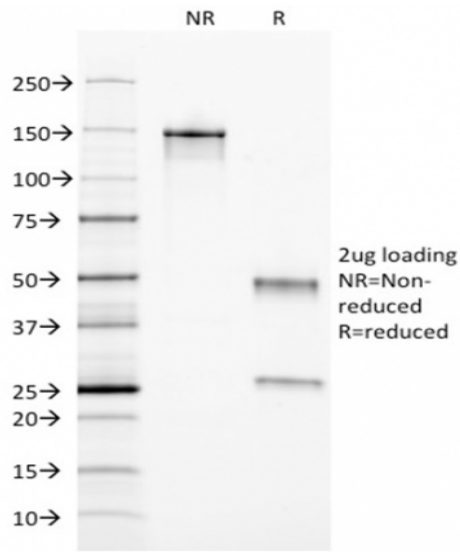
**Western Blot (WB):**

This product was successfully used to stain an approx. 22kDa band in lysates of cell line HeLa. Recommended concentration: 0.5-1.5ug/ml



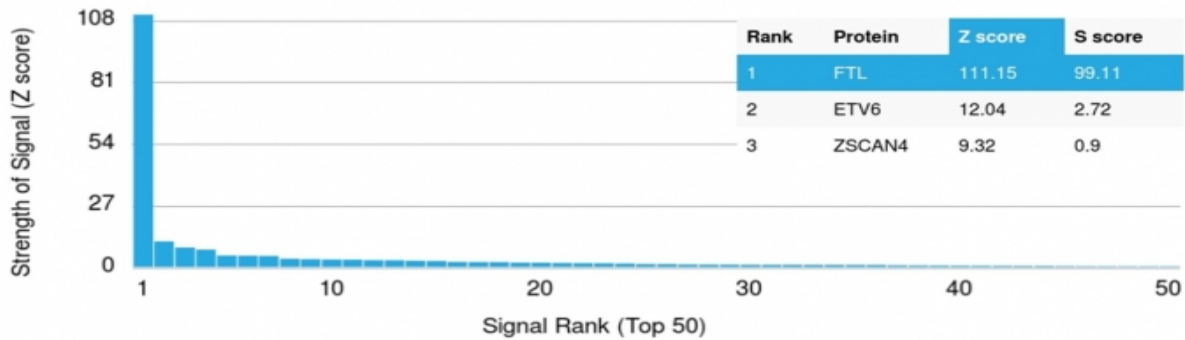
Western Blot of a HeLa lysate (30ug) stained with FTL Mouse Monoclonal Antibody AE00175 at 1ug/ml (1h at ambient temp). ECL staining by HRP.

SDS-PAGE Analysis of Purified FTL Mouse Monoclonal Antibody AE00175. Confirmation of Purity and Integrity of Antibody.



Integrity of the purified antibody AE00175 under non-reduced and reduced conditions, showing intact IgG at around 150kDa (NR) and intact heavy and light chains at 50kDa and 25kDa resp. (R).

Specificity and selectivity of AE00175 to FTL were tested against >19,000 full-length human proteins on a human protein array. A protein BLAST search against H. sapiens revealed the following closely related other protein: FTH. This protein was part of the array used and showed no cross-reactivity signals.



Cross-reactivity assessment of FTL Mouse Monoclonal Antibody AE00175 (1ug/ml) on CDI's Protein Array containing more than 19,000 full-length human proteins.

The Z-score represents the strength of a signal that an antibody (through a fluorophore-tagged secondary reagent) produces when binding to a particular protein on the array. Z-scores are in units of standard deviations (SD's) above the mean value of all signals generated on that array. When Z-scores are arranged in descending order, the difference between two successive values will be the S-score for the first. Thus, the S-score represents the relative specificity of the antibody to its intended target. An antibody is considered specific to its intended target, when it has an S-score of at least 2.5. For example, if an antibody binds to intended protein X with a Z-score of 43 and to the cross-reacting protein Y with a next Z-score of 14, then the S-score for the antibody to intended target X equals 29 (43-14).