



Cat nr AE00190

Product Datasheet

Mouse Monoclonal Antibody, clone MKI67/2462 to:

Ki-67

Antigen identified by monoclonal antibody Ki-67; Antigen KI-67; Antigen Ki67; Marker of proliferation Ki-67; Proliferation marker protein Ki-67; KIA; MIB-; MIB-1; MKI67; PPP1R105

Cellular localization Nucleolus

Official Symbol (Gene) MKI67

GenelD 4288

SwissProt P46013

Confirmed Applications	ICC, IHC, PA, WB
Positive controls	HeLa, Raji, Ramos, any actively proliferating cells, for example in skin, tonsil or lymph node
Aeonian Rating [®]	80

Purification	<input type="checkbox"/>	By Protein A from bioreactor concentrate
Formulation	<input type="checkbox"/>	200ug IgG/ml in PBS, 0.05% BSA, 0.05% azide (20ug or 100ug)
	<input type="checkbox"/>	1mg IgG/ml in PBS (100ug or contact us for quotation)
Amount	<input type="checkbox"/>	20ug
	<input type="checkbox"/>	100ug
Isotype		Mouse IgG2b, kappa
Confirmed species reactivity		Human
Immunogen		Recombinant fragment around aa 2293-2478 of human Ki-67 protein (exact sequence is proprietary)
Epitope		Within aa 2293-2478 region

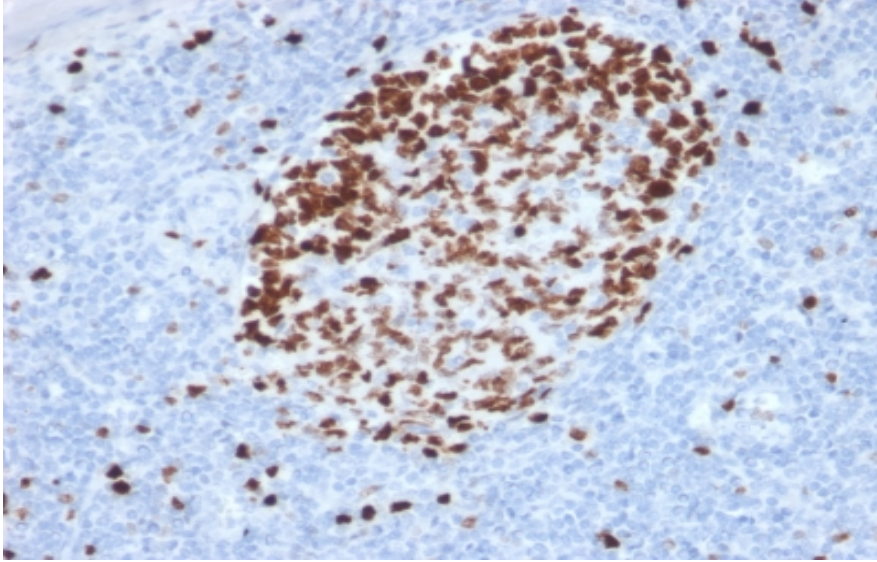
Storage instructions	Avoid repeated freeze/thaw cycles. For long term storage, keep small aliquots at -20C or -80C and keep one aliquot at 4C for daily experimentations. Azide will preserve antibody at 4C for 6-12 months, when kept away from direct sun light.
Expiration	Integrity warranted for 24 months after purchase when handled and stored according to instructions, see below.
Warranty	This product is only warranted for the specifications as described in this product sheet and only when the product is handled and stored according to instructions. User should validate this antibody in the application and tissue/cell type as required, after confirmation of integrity upon receipt is obtained by reproducing the performance as described below. Should such confirmation not be attempted, any warranty is void. In case of non-conformance, user needs to contact us immediately for replacement or refund.
Liability	This product is for in vitro research use only. Any other applications, such as diagnostics or therapeutics, or in vivo experiments, and the validation of this product therein, are solely at the responsibility of the buyer/user.

Product performance see next pages

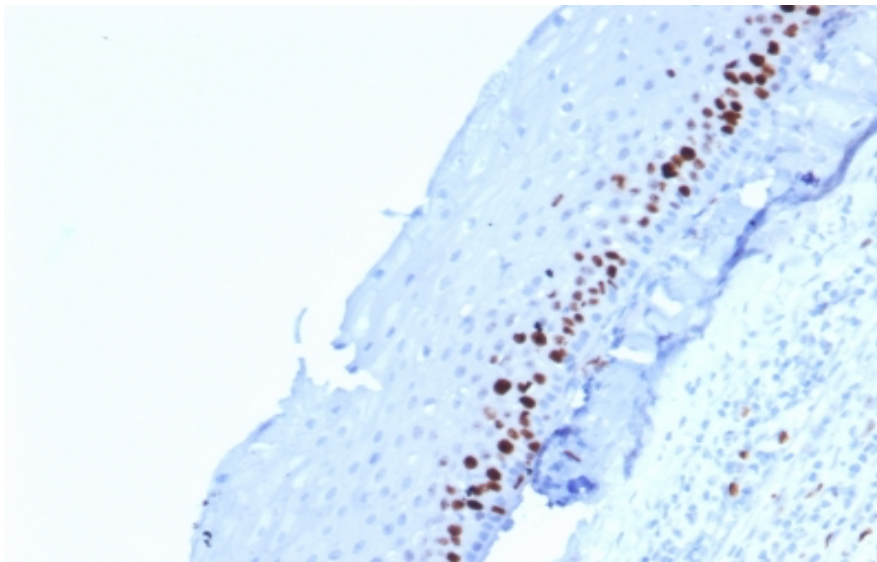
Product data:

ImmunoHistoChemistry (IHC):

This product shows staining of proliferating lymphocytes in human tonsil sections and of active basal layer cells of human epidermis sections. Recommended concentration: 1-3ug/ml



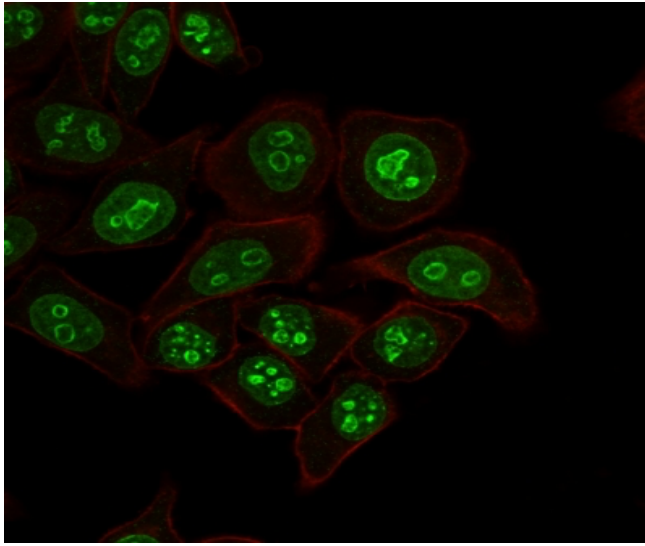
Formaldehyde-fixed, paraffin-embedded human tonsil stained with Ki-67 Mouse Monoclonal Antibody AE00190 at 1-2ug/ml for 30 minutes at RT. Epitope retrieval: Boiling at pH6 for 10-20 min followed by 20 min cooling. DAB staining by HRP polymer.



Formaldehyde-fixed, paraffin-embedded human skin stained with Ki-67 Mouse Monoclonal Antibody AE00190 at 1-2ug/ml for 30 minutes at RT. Epitope retrieval: Boiling at pH6 for 10-20 min followed by 20 min cooling. DAB staining by HRP polymer.

ImmunoCytoChemistry (ICC):

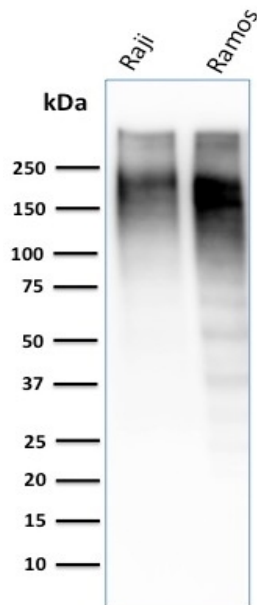
This product shows staining of nucleoli in cell line HeLa. Recommended concentration: 1-3ug/ml



Confocal microscopy of HeLa stained with Ki-67 Mouse Monoclonal Antibody AE00190 at 1-2ug/ml (1h at ambient temp). Detection by CF488 (green) for the antibody and Phalloidin (red) for membrane staining.

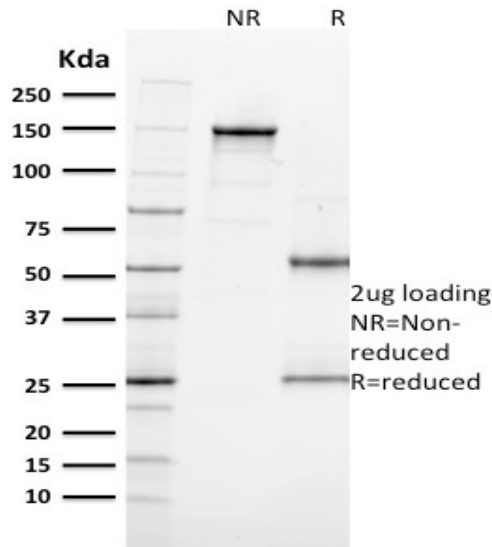
Western Blot (WB):

This product was successfully used to stain an approx. 200kDa band in lysates of cell lines Raji and Ramos. Recommended concentration: 0.3-1ug/ml



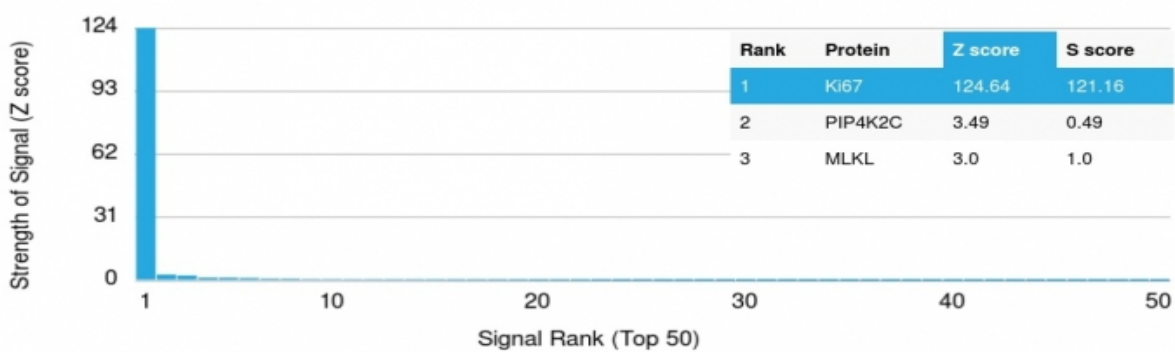
Western Blot of Raji and Ramos lysates (30ug) stained with Ki-67 Mouse Monoclonal Antibody AE00190 at 0.3-0.6ug/ml (1h at ambient temp). ECL staining by HRP.

SDS-PAGE Analysis of Purified Ki-67 Mouse Monoclonal Antibody AE00190. Confirmation of Purity and Integrity of Antibody.



Integrity of the purified antibody AE00190 under non-reduced and reduced conditions, showing intact IgG at around 150kDa (NR) and intact heavy and light chains at 55kDa and 25kDa resp. (R).

Specificity and selectivity of AE00190 to Ki-67 were tested against >19,000 full-length human proteins on a human protein array. A protein BLAST search against *H. sapiens* revealed no closely related other proteins.



Cross-reactivity assessment of Ki-67 Mouse Monoclonal Antibody AE00190 (1ug/ml) on CDI's Protein Array containing more than 19,000 full-length human proteins.

The Z-score represents the strength of a signal that an antibody (through a fluorophore-tagged secondary reagent) produces when binding to a particular protein on the array. Z-scores are in units of standard deviations (SD's) above the mean value of all signals generated on that array. When Z-scores are arranged in descending order, the difference between two successive values will be the S-score for the first. Thus, the S-score represents the relative specificity of the antibody to its intended target. An antibody is considered specific to its intended target, when it has an S-score of at least 2.5. For example, if an antibody binds to intended protein X with a Z-score of 43 and to the cross-reacting protein Y with a next Z-score of 14, then the S-score for the antibody to intended target X equals 29 (43-14).