



## Cat nr AE00191

## Product Datasheet

Mouse Monoclonal Antibody, clone MME/1892 to:

### CD10, NEP

Membrane metalloendopeptidase; Neprilysin; Atriopeptidase; Common acute lymphocytic leukemia antigen; Enkephalinase; Neutral endopeptidase 24.11; Skin fibroblast elastase; CALLA; CD10; CMT2T; NEP; MME; SCA43; SFE, CD\_antigen: CD10

Cellular localization Plasma membrane, cell surface

Official Symbol (Gene) MME  
GenelD 4311  
SwissProt P08473

Confirmed Applications IHC, PA, WB  
Positive controls Raji, Ramos, kidney  
Aeonian Rating© 80

Purification By Protein A from bioreactor concentrate  
Formulation ☐ 200ug IgG/ml in PBS, 0.05% BSA, 0.05% azide (20ug or 100ug)  
☐ 1mg IgG/ml in PBS (100ug or contact us for quotation)  
Amount ☐ 20ug ☐ 100ug  
Isotype Mouse IgG2c, kappa  
Confirmed species reactivity Human  
Immunogen Recombinant fragment around aa 297-483 of human CD10 protein  
(exact sequence is proprietary)  
Epitope Extracellular domain (within aa 297-483 region)

Storage instructions Avoid repeated freeze/thaw cycles. For long term storage, keep small aliquots at -20C or -80C and keep one aliquot at 4C for daily experimentations. Azide will preserve antibody at 4C for 6-12 months, when kept away from direct sun light.

Expiration Integrity warranted for 24 months after purchase when handled and stored according to instructions, see below.

Warranty This product is only warranted for the specifications as described in this product sheet and only when the product is handled and stored according to instructions. User should validate this antibody in the application and tissue/cell type as required, after confirmation of integrity upon receipt is obtained by reproducing the performance as described below. Should such confirmation not be attempted, any warranty is void. In case of non-conformance, user needs to contact us immediately for replacement or refund.

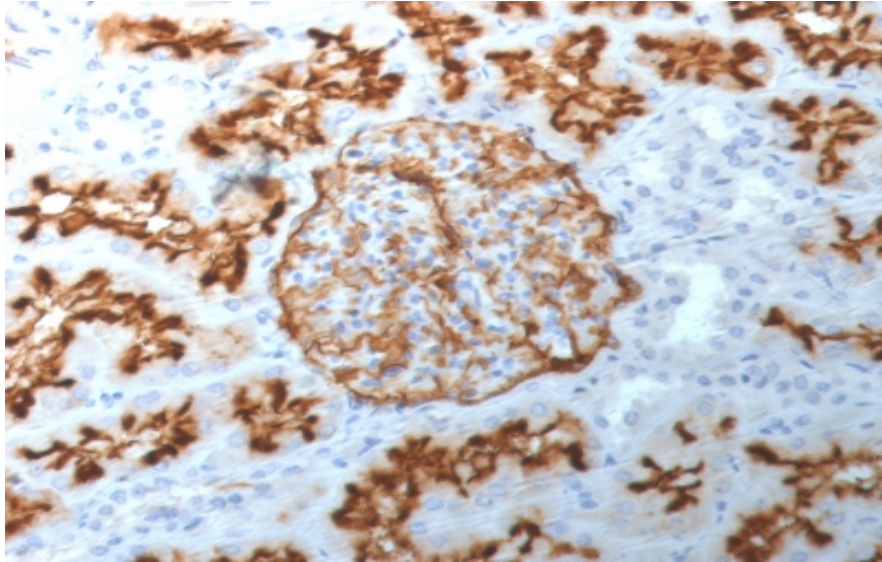
Liability This product is for in vitro research use only. Any other applications, such as diagnostics or therapeutics, or in vivo experiments, and the validation of this product therein, are solely at the responsibility of the buyer/user.

Product performance see next pages

## Product data:

### ImmunoHistoChemistry (IHC):

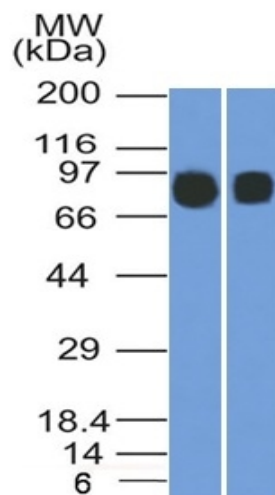
This product shows strong staining of brush border epithelial PCT cells and continued weaker staining of epithelial cells inside the glomerulus in human kidney sections. Recommended concentration: 1-3ug/ml



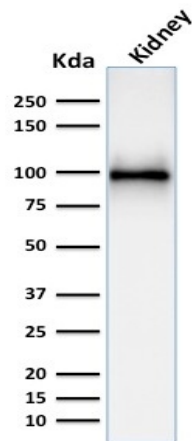
Formaldehyde-fixed, paraffin-embedded human kidney stained with CD10 Mouse Monoclonal Antibody AE00191 at 1-2ug/ml for 30 minutes at RT. Epitope retrieval: Boiling at pH9 for 10-20 min followed by 20 min cooling. DAB staining by HRP polymer.

### Western Blot (WB):

This product was successfully used to stain an approx. 90kDa band in lysates of cell lines Raji and Ramos and in human kidney lysates. Recommended concentration: 0.5-1.5ug/ml

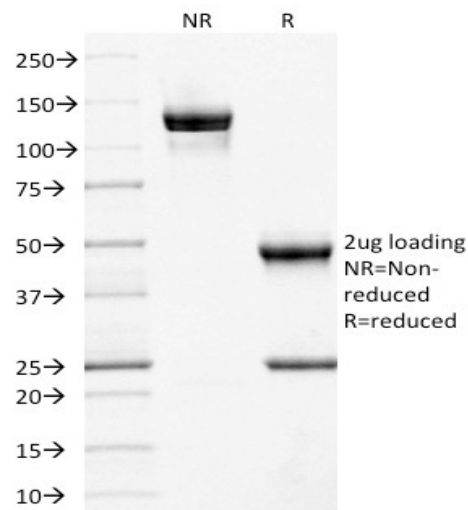


Western Blot of Raji (left) and Ramos (right) lysates (30ug) stained with CD10 Mouse Monoclonal Antibody AE00191 at 1ug/ml (1h at ambient temp). ECL staining by HRP.



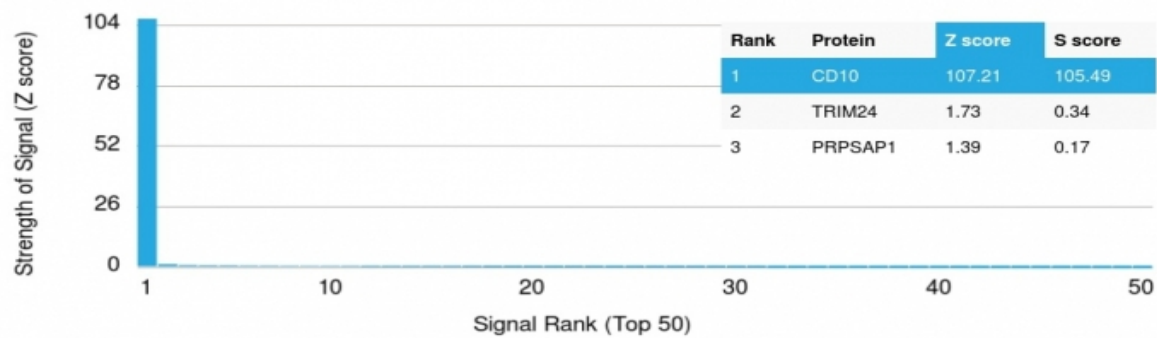
Western Blot of a human kidney lysate (30ug) stained with CD10 Mouse Monoclonal Antibody AE00191 at 1ug/ml (1h at ambient temp). ECL staining by HRP.

#### SDS-PAGE Analysis of Purified CD10 Mouse Monoclonal Antibody AE00191. Confirmation of Purity and Integrity of Antibody.



Integrity of the purified antibody AE00191 under non-reduced and reduced conditions, showing intact IgG at around 130kDa (NR) and intact heavy and light chains at 48kDa and 25kDa resp. (R).

Specificity and selectivity of AE00191 to CD10 were tested against >19,000 full-length human proteins on a human protein array. A protein BLAST search against *H. sapiens* revealed the following closely related other protein: MMEL1. This protein was part of the array used and showed no cross-reactivity signals.



Cross-reactivity assessment of CD10 Mouse Monoclonal Antibody AE00191 (1ug/ml) on CDI's Protein Array containing more than 19,000 full-length human proteins.

The Z-score represents the strength of a signal that an antibody (through a fluorophore-tagged secondary reagent) produces when binding to a particular protein on the array. Z-scores are in units of standard deviations (SD's) above the mean value of all signals generated on that array. When Z-scores are arranged in descending order, the difference between two successive values will be the S-score for the first. Thus, the S-score represents the relative specificity of the antibody to its intended target. An antibody is considered specific to its intended target, when it has an S-score of at least 2.5. For example, if an antibody binds to intended protein X with a Z-score of 43 and to the cross-reacting protein Y with a next Z-score of 14, then the S-score for the antibody to intended target X equals 29 (43-14).