



Cat nr AE00200

Product Datasheet

Mouse Monoclonal Antibody, clone BOB1/2424 to:

BOB.1

B-cell-specific coactivator OBF-1; POU class 2 associating factor 1; POU domain class 2-associating factor 1; OCT-binding factor 1; BOB-1; BOB1; BOB.1; OBF-1; OBF1; OCAB; OCA-B; POU2AF1

Cellular localization Nucleus

Official Symbol (Gene) POU2AF1

GenelD 5450

SwissProt Q16633

Confirmed Applications ICC, IHC, PA, WB

Positive controls Raji, spleen

Aeonian Rating© 80

Purification		By Protein A from bioreactor concentrate
Formulation	<input type="checkbox"/>	200ug IgG/ml in PBS, 0.05% BSA, 0.05% azide (20ug or 100ug)
	<input type="checkbox"/>	1mg IgG/ml in PBS (100ug or contact us for quotation)
Amount	<input type="checkbox"/>	20ug
	<input type="checkbox"/>	100ug
Isotype		Mouse IgG2b, kappa
Confirmed species reactivity		Human
Immunogen		Recombinant fragment around aa 148-255 of human BOB.1 protein (exact sequence is proprietary)
Epitope		Within aa 148-255 region

Storage instructions Avoid repeated freeze/thaw cycles. For long term storage, keep small aliquots at -20C or -80C and keep one aliquot at 4C for daily experimentations. Azide will preserve antibody at 4C for 6-12 months, when kept away from direct sun light.

Expiration Integrity warranted for 24 months after purchase when handled and stored according to instructions, see below.

Warranty This product is only warranted for the specifications as described in this product sheet and only when the product is handled and stored according to instructions. User should validate this antibody in the application and tissue/cell type as required, after confirmation of integrity upon receipt is obtained by reproducing the performance as described below. Should such confirmation not be attempted, any warranty is void. In case of non-conformance, user needs to contact us immediately for replacement or refund.

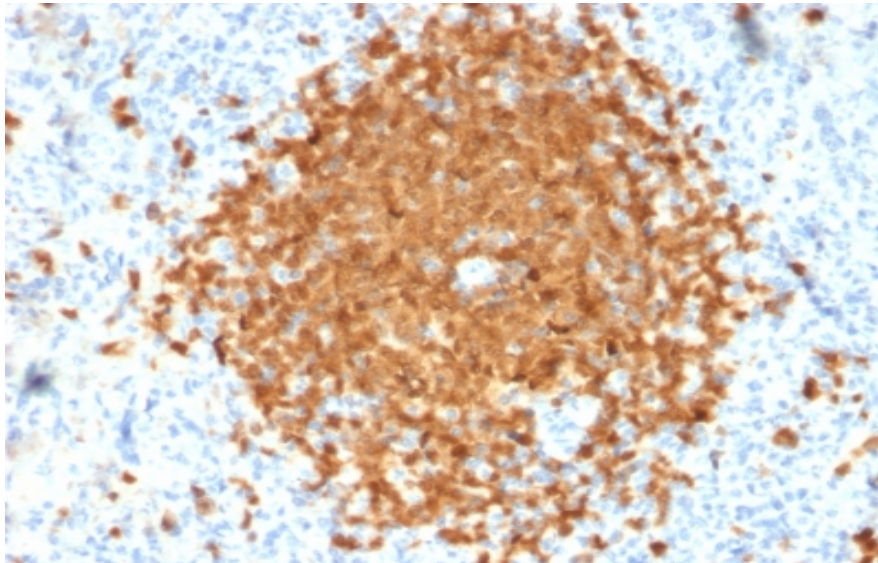
Liability This product is for in vitro research use only. Any other applications, such as diagnostics or therapeutics, or in vivo experiments, and the validation of this product therein, are solely at the responsibility of the buyer/user.

Product performance see next pages

Product data:

ImmunoHistoChemistry (IHC):

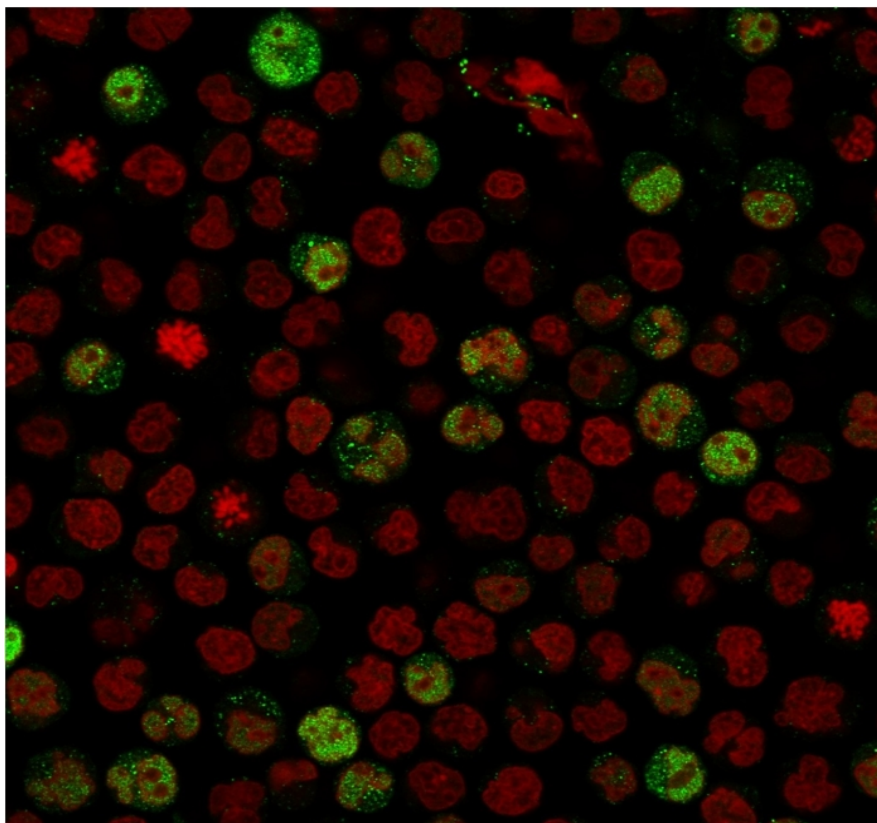
This product shows staining of germinal centre B-cells in human spleen sections. Recommended concentration: 1-3ug/ml



Formaldehyde-fixed, paraffin-embedded human spleen stained with BOB.1 Mouse Monoclonal Antibody AE00200 at 1-2ug/ml for 30 minutes at RT. Epitope retrieval: Boiling at pH6 for 10-20 min followed by 20 min cooling. DAB staining by HRP polymer.

ImmunoCytoChemistry (ICC):

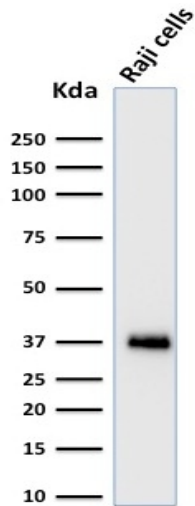
This product was successfully used to stain nuclei in Raji. Recommended concentration: 1-3ug/ml



PFA-fixed Raji cells stained with BOB.1 Mouse Monoclonal Antibody AE00200 at 1-2ug/ml for 1h at RT. Detection by confocal microscopy using CF488 (green) for the antibody and RedDot (red) for nuclear staining.

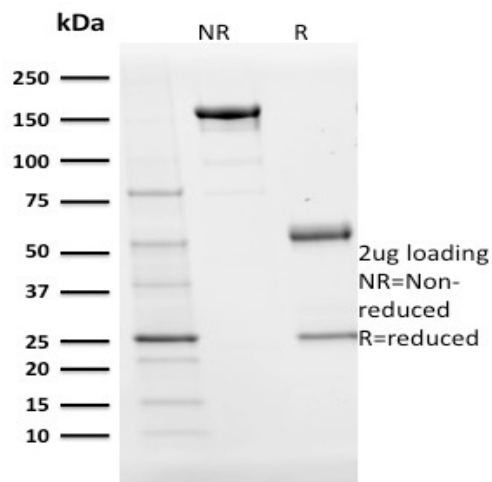
Western Blot (WB):

This product was successfully used to stain an approx. 37kDa band in lysates of cell line Raji.
Recommended concentration: 0.5-1.5ug/ml



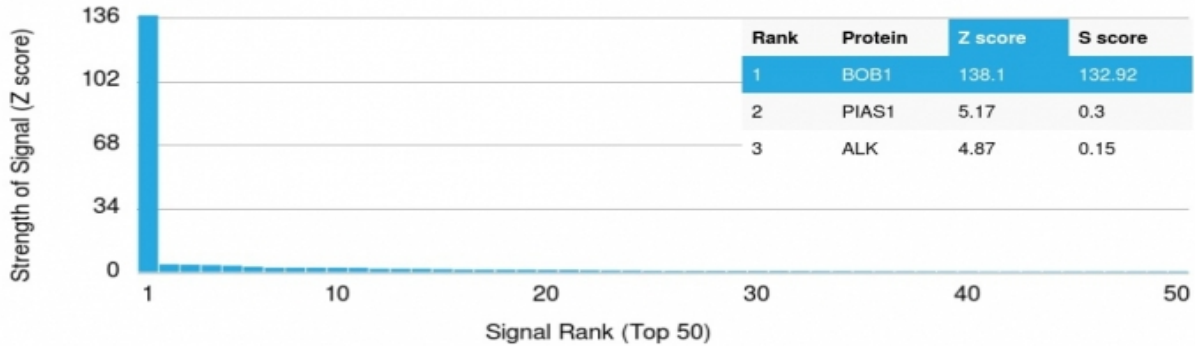
Western Blot of a Raji lysate (30ug) stained with BOB.1 Mouse Monoclonal Antibody AE00200 at 1ug/ml (1h at ambient temp). ECL staining by HRP.

SDS-PAGE Analysis of Purified BOB.1 Mouse Monoclonal Antibody AE00200. Confirmation of Purity and Integrity of Antibody.



Integrity of the purified antibody AE00200 under non-reduced and reduced conditions, showing intact IgG at around 160kDa (NR) and intact heavy and light chains at 60kDa and 25kDa resp. (R).

Specificity and selectivity of AE00200 to BOB.1 were tested against >19,000 full-length human proteins on a human protein array. A protein BLAST search against H. sapiens revealed no closely related other proteins.



Cross-reactivity assessment of BOB.1 Mouse Monoclonal Antibody AE00200 (1ug/ml) on CDI's Protein Array containing more than 19,000 full-length human proteins.

The Z-score represents the strength of a signal that an antibody (through a fluorophore-tagged secondary reagent) produces when binding to a particular protein on the array. Z-scores are in units of standard deviations (SD's) above the mean value of all signals generated on that array. When Z-scores are arranged in descending order, the difference between two successive values will be the S-score for the first. Thus, the S-score represents the relative specificity of the antibody to its intended target. An antibody is considered specific to its intended target, when it has an S-score of at least 2.5. For example, if an antibody binds to intended protein X with a Z-score of 43 and to the cross-reacting protein Y with a next Z-score of 14, then the S-score for the antibody to intended target X equals 29 (43-14).