



Cat nr AE00204

Product Datasheet

Mouse Monoclonal Antibody, clone BLCAM/1795 to:

CD22

B-cell receptor CD22; B-lymphocyte cell adhesion molecule; CD_antigen: CD22; Sialic acid-binding Ig-like lectin 2; T-cell surface antigen Leu-14; BL-CAM; SIGLEC-2; SIGLEC2

Cellular localization Plasma membrane, cell surface

Official Symbol (Gene) CD22
GenelD 933
SwissProt P20273

Confirmed Applications ICC, IHC, PA, WB
Positive controls Tonsil, Raji, Ramos

Aeonian Rating© 85

Purification By Protein G from bioreactor concentrate
Formulation 200ug IgG/ml in PBS, 0.05% BSA, 0.05% azide (20ug or 100ug)
 1mg IgG/ml in PBS (100ug or contact us for quotation)
Amount 20ug 100ug
Isotype Mouse IgG1, kappa
Confirmed species reactivity Human
Immunogen Recombinant fragment around aa 52-178 of human CD20 protein
(exact sequence is proprietary)
Epitope Extracellular domain (within aa 52-178 region)

Storage instructions Avoid repeated freeze/thaw cycles. For long term storage, keep small aliquots at -20C or -80C and keep one aliquot at 4C for daily experimentations. Azide will preserve antibody at 4C for 6-12 months, when kept away from direct sun light.

Expiration Integrity warranted for 24 months after purchase when handled and stored according to instructions, see below.

Warranty This product is only warranted for the specifications as described in this product sheet and only when the product is handled and stored according to instructions. User should validate this antibody in the application and tissue/cell type as required, after confirmation of integrity upon receipt is obtained by reproducing the performance as described below. Should such confirmation not be attempted, any warranty is void. In case of non-conformance, user needs to contact us immediately for replacement or refund.

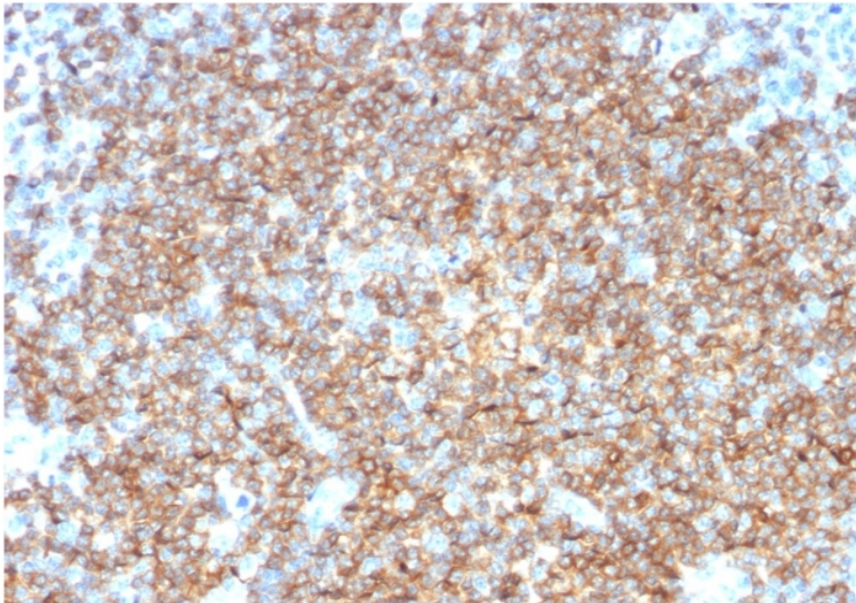
Liability This product is for in vitro research use only. Any other applications, such as diagnostics or therapeutics, or in vivo experiments, and the validation of this product therein, are solely at the responsibility of the buyer/user.

Product performance see next pages

Product data:

ImmunoHistoChemistry (IHC):

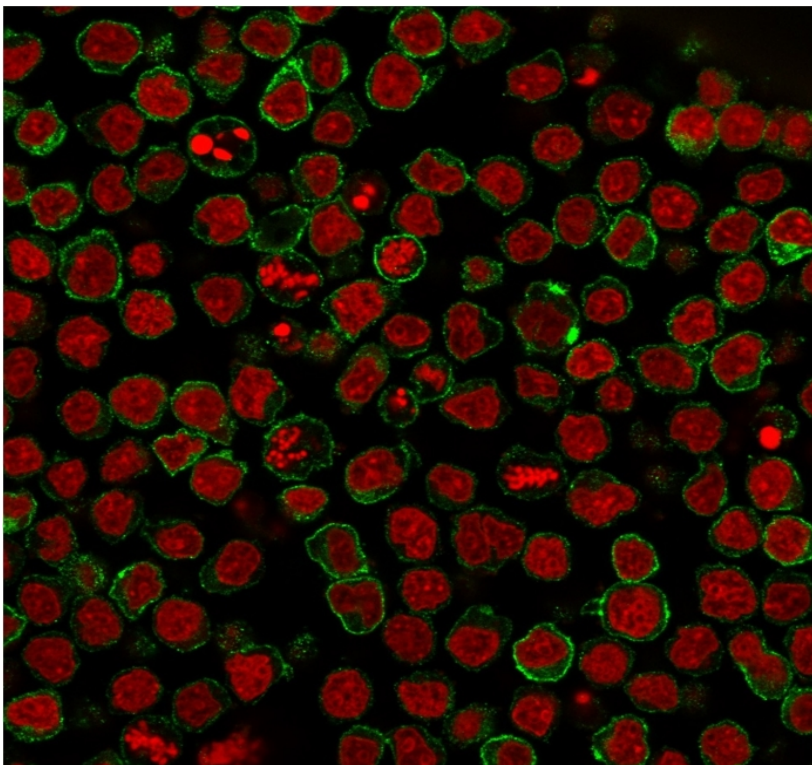
This product shows B-cell membrane staining in human tonsil sections. Recommended concentration: 1-3ug/ml



Formaldehyde-fixed, paraffin-embedded human tonsil stained with CD22 Mouse Monoclonal Antibody AE00204 at 1-2ug/ml for 30 minutes at RT. Epitope retrieval: Exposure to 95C at pH9 for 45 min followed by 20 min cooling. DAB staining by HRP polymer.

ImmunoCytoChemistry (ICC):

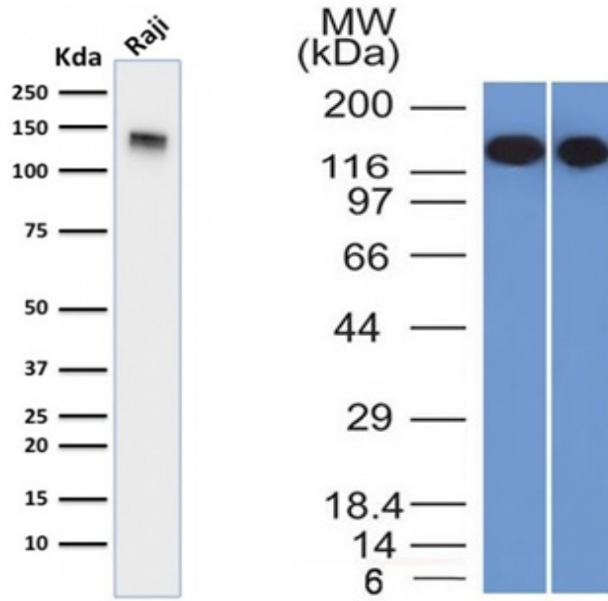
This product shows staining of plasma membranes in cell line Ramos. Recommended concentration: 1-3ug/ml



Confocal microscopy of PFA-fixed Ramos stained with CD22 Mouse Monoclonal Antibody AE00204 at 1-2ug/ml (1h at ambient temp). Detection by CF488 (green) for the antibody and RedDot (red) for nuclear staining.

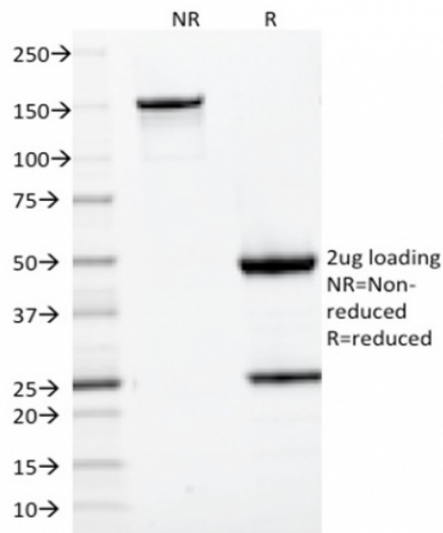
Western Blot (WB):

This product was successfully used to stain an approx. 140kDa band in human Raji and Ramos lysates.
Recommended concentration: 1-3ug/ml



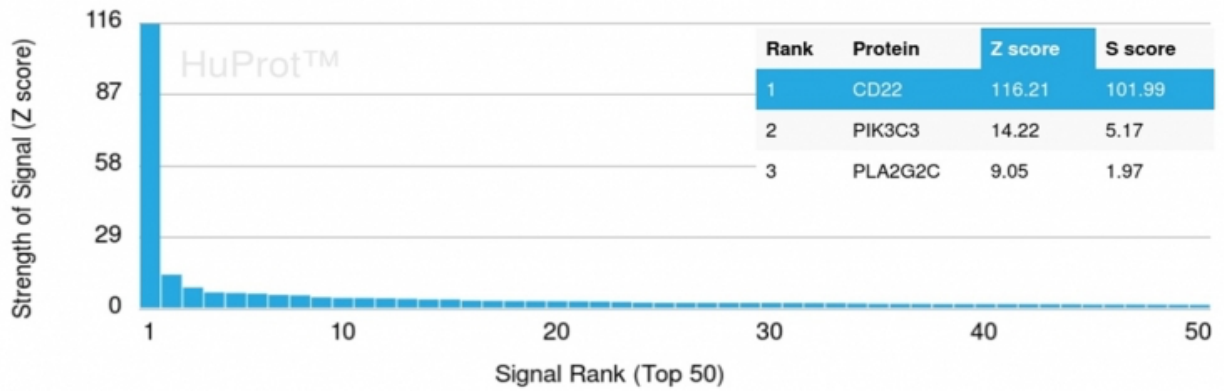
Western Blot of a Raji lysate (left) and Raji + Ramos lysates (right) (30ug) stained with CD22 Mouse Monoclonal Antibody AE00204 at 1ug/ml (1h at ambient temp). ECL staining by HRP.

SDS-PAGE Analysis of Purified CD22 Mouse Monoclonal Antibody AE00204. Confirmation of Purity and Integrity of Antibody.



Integrity of the purified antibody AE00204 under non-reduced and reduced conditions, showing intact IgG at around 150kDa (NR) and intact heavy and light chains at 50kDa and 25kDa resp. (R).

Specificity and selectivity of AE00204 were tested against >19,000 full-length human proteins on a human protein array. A protein BLAST search against H. sapiens revealed no closely related proteins.



Cross-reactivity assessment of CD22 Mouse Monoclonal Antibody AE00204 (1ug/ml) on CDI's Protein Array containing more than 19,000 full-length human proteins.

The Z-score represents the strength of a signal that an antibody (through a fluorophore-tagged secondary reagent) produces when binding to a particular protein on the array. Z-scores are in units of standard deviations (SD's) above the mean value of all signals generated on that array. When Z-scores are arranged in descending order, the difference between two successive values will be the S-score for the first. Thus, the S-score represents the relative specificity of the antibody to its intended target. An antibody is considered specific to its intended target, when it has an S-score of at least 2.5. For example, if an antibody binds to intended protein X with a Z-score of 43 and to the cross-reacting protein Y with a next Z-score of 14, then the S-score for the antibody to intended target X equals 29 (43-14).