



## Cat nr AE00207

## Product Datasheet

Rabbit Polyclonal Phospho-Specific Antibody, AKT1-pS473 to:

### AKT1, phosphorylated S473

AKT; CWS6; PKB; PKB-ALPHA; PKBalpha; PRKBA; RAC; RAC-ALPHA; RAC-alpha serine/threonine-protein kinase; Protein kinase B; Protein kinase B alpha; Proto-oncogene c-Akt; RAC-PK-alpha

Cellular localization Nucleus, intracellular vesicles and plasma membrane

Official Symbol (Gene) AKT1  
GeneID 207  
SwissProt P31749

Confirmed Applications IHC, WB  
Positive controls PDGF-stimulated NIH3T3  
Customers positive feedback Human chronic myeloid leukemia cells, C57BL6, 3T3-L1  
Aeonian Rating© 70

Purification Antigen-affinity purified from serum by sequential phospho-peptide and non-phospho-peptide affinity columns

Formulation  PBS, 0.02% azide, 50% glycerol

Amount  100ug  200ug

Isotype Rabbit IgG

Confirmed species reactivity Human, Mouse, Rat

Immunogen A synthetic peptide around phosphorylated S473 of human AKT1 (NP\_005154.2).

Epitope A short sequence around phosphorylated S473 (exact sequence is proprietary)

Storage instructions Avoid repeated freeze/thaw cycles. For long term storage, keep small aliquots at -20C or -80C and keep one aliquot at 4C for daily experimentations. Azide will preserve antibody at 4C for 6-12 months, when kept away from direct sun light.

Expiration Integrity warranted for 24 months after purchase when handled and stored according to instructions, see below.

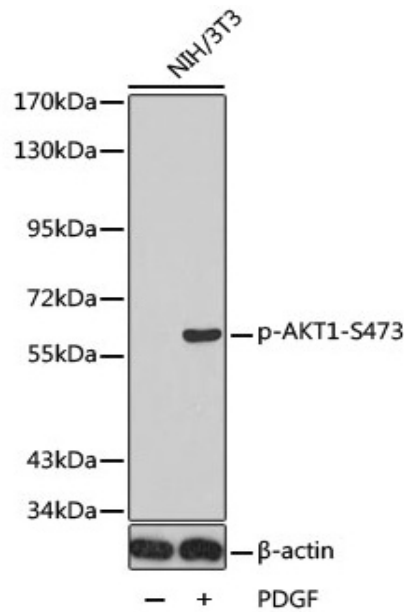
Warranty This product is only warranted for the specifications as described in this product sheet and only when the product is handled and stored according to instructions. User should validate this antibody in the application and tissue/cell type as required, after confirmation of integrity upon receipt is obtained by reproducing the performance as described below. Should such confirmation not be attempted, any warranty is void. In case of non-conformance, user needs to contact us immediately for replacement or refund.

Liability This product is for in vitro research use only. Any other applications, such as diagnostics or therapeutics, or in vivo experiments, and the validation of this product therein, are solely at the responsibility of the buyer/user.

**Product data:**

**Western Blot (WB):**

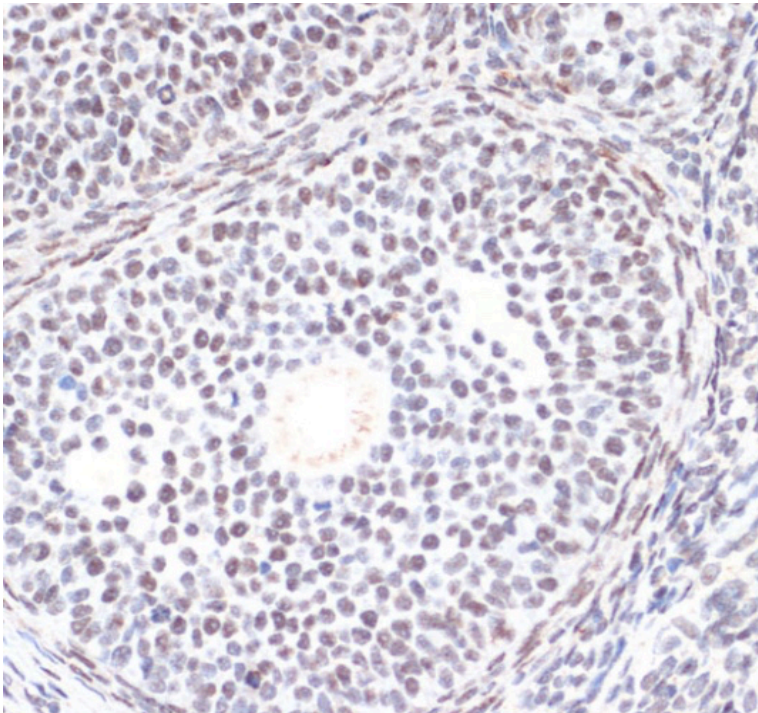
This product was successfully used to stain an approx. 60kDa band in lysates of PDGF-stimulated NIH3T3. Recommended concentration: 1-3ug/ml



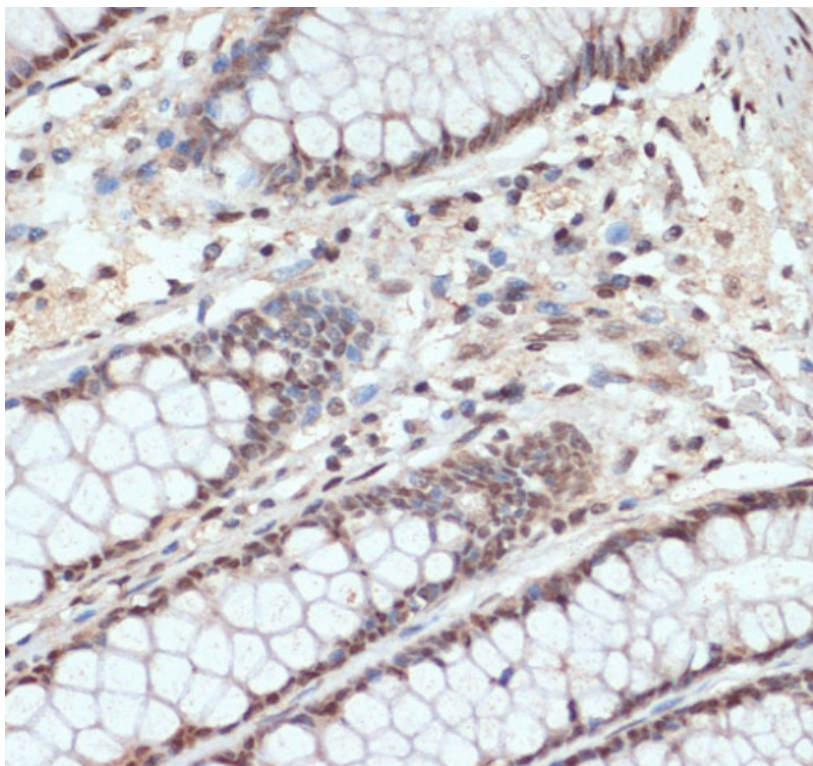
Western Blot of 30ug lysate from NIH3T3 with or without stimulation with 100ng/ml PDGF for 15min, stained with AKT1-pS473 Rabbit Polyclonal Antibody AE00207 at 1ug/ml (1h at ambient temp). ECL staining by HRP.

**ImmunoHytoChemistry (IHC):**

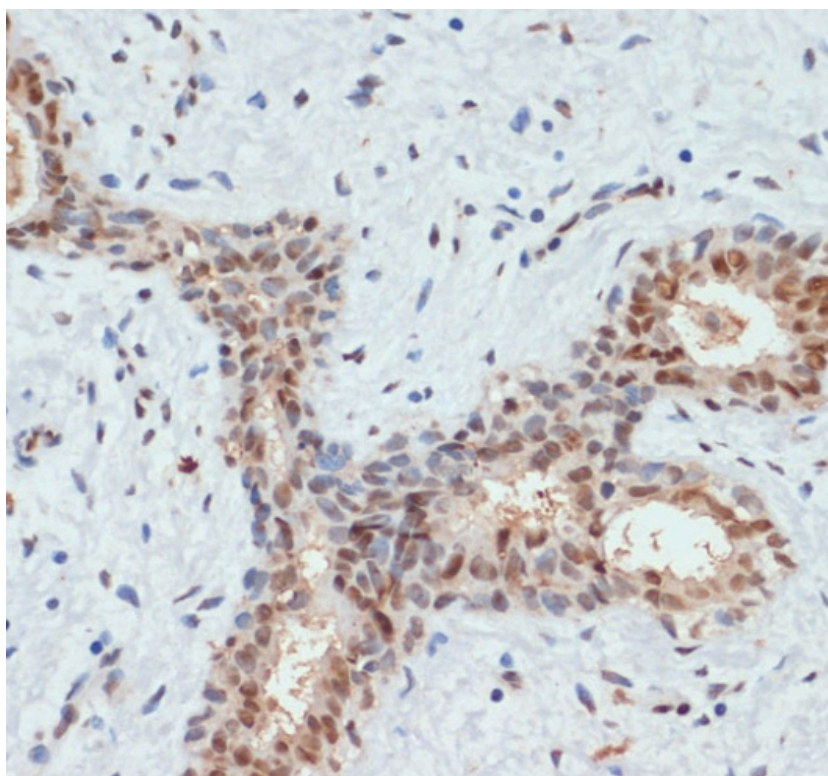
This product shows nuclear staining in sections of human colon, breast carcinoma and rat ovary. Recommended concentration: 5-15ug/ml



Formaldehyde-fixed, paraffin-embedded rat ovary stained with AKT1-pS473 Rabbit Polyclonal Antibody AE00207 at 10ug/ml for 30 minutes at RT. Epitope retrieval: Microwave heating at pH7 to boiling, 5min at 95-98C, 1min at 100C, then cool to roomtemp. DAB staining by HRP polymer.



Formaldehyde-fixed, paraffin-embedded human colon stained with AKT1-pS473 Rabbit Polyclonal Antibody AE00207 at 10ug/ml for 30 minutes at RT. Epitope retrieval: Microwave heating at pH7 to boiling, 5min at 95-98C, 1min at 100C, then cool to roomtemp. DAB staining by HRP polymer.



Formaldehyde-fixed, paraffin-embedded human breast carcinoma stained with AKT1-pS473 Rabbit Polyclonal Antibody AE00207 at 10ug/ml for 30 minutes at RT. Epitope retrieval: Microwave heating at pH7 to boiling, 5min at 95-98C, 1min at 100C, then cool to roomtemp. DAB staining by HRP polymer.