



Cat nr AE00209

Product Datasheet

Rabbit Polyclonal Phospho-Specific Antibody, BRCA1-pS1423 to:

BRCA1, phosphorylated S1423

Breast cancer type 1 susceptibility protein; RING finger protein 53; RING-type E3 ubiquitin transferase BRCA1; BRCAI; BRCA-1; BRCC1; BROVCA1; FANCS; IRIS; PNCA4; PPP1R53; PSCP; RNF53

Cellular localization Nucleus

Official Symbol (Gene) BRCA1

GeneID 672

SwissProt P383984

Confirmed Applications	IHC, ICC, WB
Positive controls	Anisomycin-stimulated HT29
Customers positive feedback	
Aeonian Rating©	70

Purification Antigen-affinity purified from serum by sequential phospho-peptide and non-phospho-peptide affinity columns

Formulation PBS, 0.02% azide, 50% glycerol

Amount 100ug 200ug

Isotype Rabbit IgG

Confirmed species reactivity Human, Mouse, Rat

Immunogen A synthetic peptide around phosphorylated S1423 of human BRCA1

Epitope A short sequence around phosphorylated S1423: HGSQP

Storage instructions Avoid repeated freeze/thaw cycles. For long term storage, keep small aliquots at -20C or -80C and keep one aliquot at 4C for daily experimentations. Azide will preserve antibody at 4C for 6-12 months, when kept away from direct sun light.

Expiration Integrity warranted for 24 months after purchase when handled and stored according to instructions, see below.

Warranty This product is only warranted for the specifications as described in this product sheet and only when the product is handled and stored according to instructions. User should validate this antibody in the application and tissue/cell type as required, after confirmation of integrity upon receipt is obtained by reproducing the performance as described below. Should such confirmation not be attempted, any warranty is void. In case of non-conformance, user needs to contact us immediately for replacement or refund.

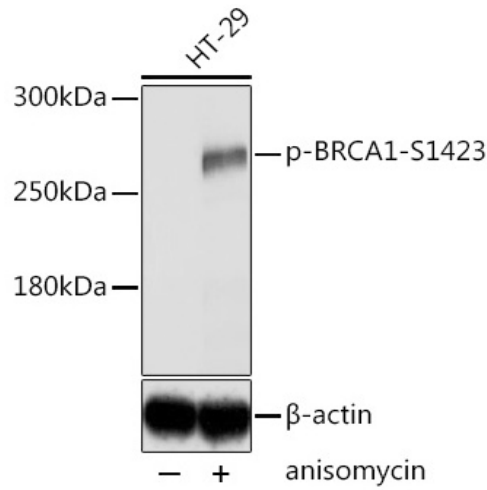
Liability This product is for in vitro research use only. Any other applications, such as diagnostics or therapeutics, or in vivo experiments, and the validation of this product therein, are solely at the responsibility of the buyer/user.

Product performance see next pages

Product data:

Western Blot (WB):

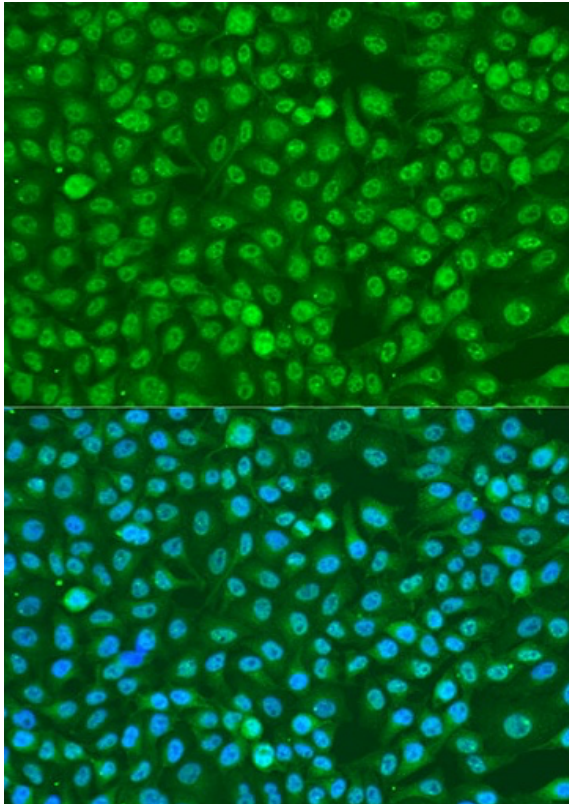
This product was successfully used to stain an approx. 270kDa band in lysates of anisomycin-stimulated HT29 after overnight serum-starvation. Recommended concentration: 1-3ug/ml



Western Blot of 30ug lysate from HT29 with or without 30 min stimulation by 5ug/ml Anisomycin, stained with BRCA1-pS1423 Rabbit Polyclonal Antibody AE00209 at 1ug/ml (1h at ambient temp). ECL staining by HRP.

ImmunoCytoChemistry (ICC):

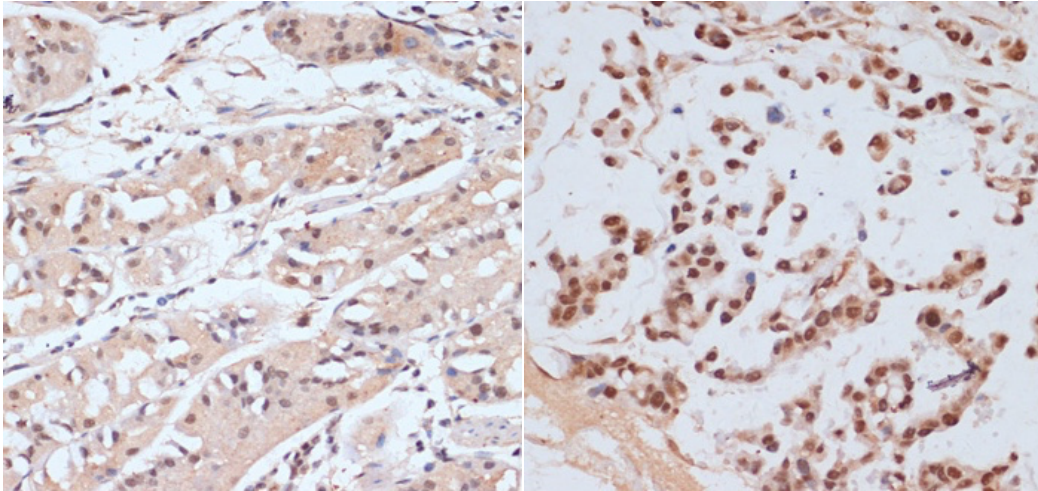
This product shows nuclear staining in cell line U2OS. Recommended concentration: 5-15ug/ml



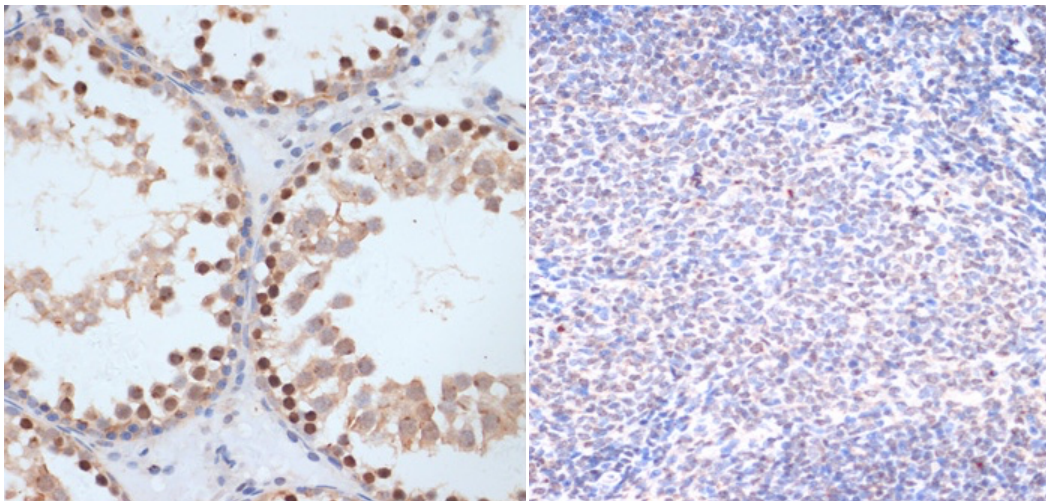
Confocal microscopy of U2OS stained with BRCA1-pS1423 Rabbit Polyclonal Antibody AE00209 at 10ug/ml (1h at ambient temp). Detection by Alexa Fluor 488 (green, top + bottom) for the antibody and DAPI (blue, bottom only) for nuclear staining.

ImmunoHistoChemistry (IHC):

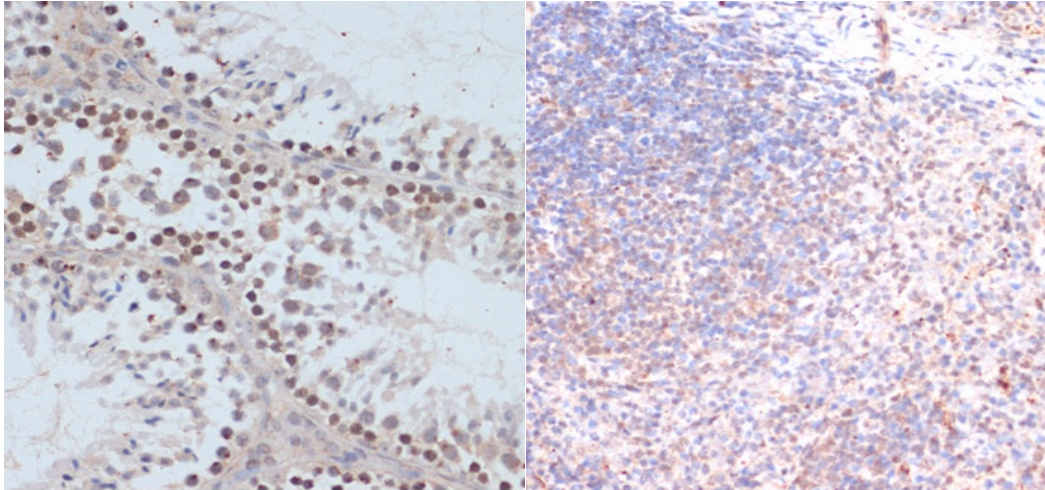
This product shows nuclear staining in selective human and rodent tissue sections. Please note the staining differences side-by-side. Recommended concentration: 5-15ug/ml



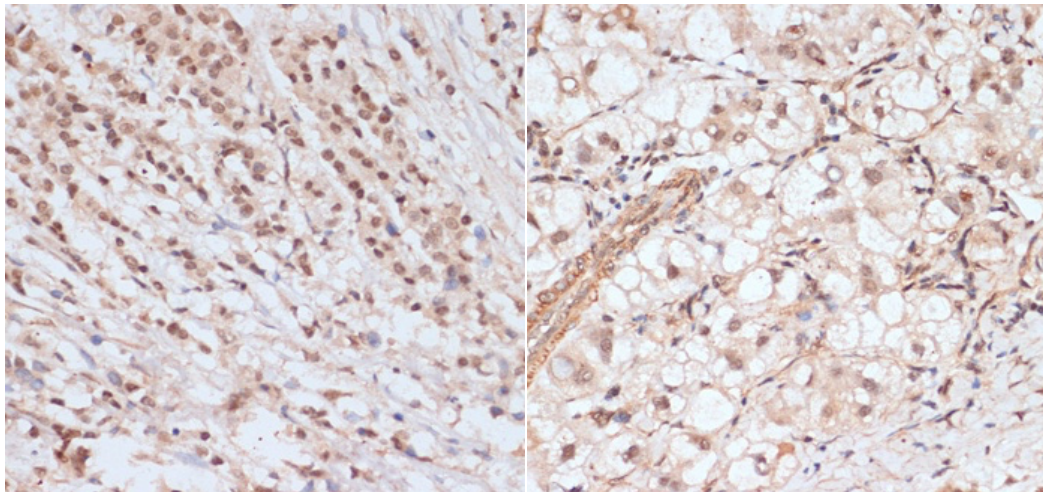
Formaldehyde-fixed, paraffin-embedded human stomach (left) and gastric cancer (right) stained with BRCA1-pS1423 Rabbit Polyclonal Antibody AE00209 at 10ug/ml for 30 minutes at RT. Epitope retrieval: Microwave heating at pH7 to boiling, 5min at 95-98C, 1min at 100C, then cool to roomtemp. DAB staining by HRP polymer.



Formaldehyde-fixed, paraffin-embedded rat testis (left) and rat spleen (right) stained with BRCA1-pS1423 Rabbit Polyclonal Antibody AE00209 at 10ug/ml for 30 minutes at RT. Epitope retrieval: Microwave heating at pH7 to boiling, 5min at 95-98C, 1min at 100C, then cool to roomtemp. DAB staining by HRP polymer.



Formaldehyde-fixed, paraffin-embedded mouse testis (left) and mouse spleen (right) stained with BRCA1-pS1423 Rabbit Polyclonal Antibody AE00209 at 10ug/ml for 30 minutes at RT. Epitope retrieval: Microwave heating at pH7 to boiling, 5min at 95-98C, 1min at 100C, then cool to roomtemp. DAB staining by HRP polymer.



Formaldehyde-fixed, paraffin-embedded human breast cancer (left) and human liver cancer (right) stained with BRCA1-pS1423 Rabbit Polyclonal Antibody AE00209 at 10ug/ml for 30 minutes at RT. Epitope retrieval: Microwave heating at pH7 to boiling, 5min at 95-98C, 1min at 100C, then cool to roomtemp. DAB staining by HRP polymer.