



**Cat nr AE00210**

**Product Datasheet**

Rabbit Polyclonal Phospho-Specific Antibody, EGFR-pY1068 to:

**EGFR, phosphorylated Y1068**

Epithelial Growth Factor Receptor; EGFR; ERBB; ERBB1; HER1; NISBD2; PIG61; mENA

Cellular localization	Plasma membrane, cell surface. Translocation to nucleus upon EGF stimulation.
Official Symbol (Gene)	EGFR
GeneID	1956
SwissProt	P00533

Confirmed Applications	WB, IP
Positive controls	ATP-treated serum-starved HeLa, EGF-stimulated serum-starved A431
Customers positive feedback	
Aeonian Rating®	70

Purification	Antigen-affinity purified from serum by sequential phospho-peptide and non-phospho-peptide affinity columns
Formulation	<input type="checkbox"/> PBS, 0.02% azide, 50% glycerol
Amount	<input type="checkbox"/> 100ug <input type="checkbox"/> 200ug
Isotype	<input type="checkbox"/> Rabbit IgG
Confirmed species reactivity	<input type="checkbox"/> Human
Immunogen	A synthetic peptide around phosphorylated Y1092 of human EGFR (NP_005219.2) corresponding to Y1068 of the mature protein (starts with L25).
Epitope	A short sequence around phosphorylated Y1068 (exact sequence is proprietary).

**Storage instructions** Avoid repeated freeze/thaw cycles. For long term storage, keep small aliquots at -20C or -80C and keep one aliquot at 4C for daily experimentations. Azide will preserve antibody at 4C for 6-12 months, when kept away from direct sun light.

**Expiration** Integrity warranted for 24 months after purchase when handled and stored according to instructions, see below.

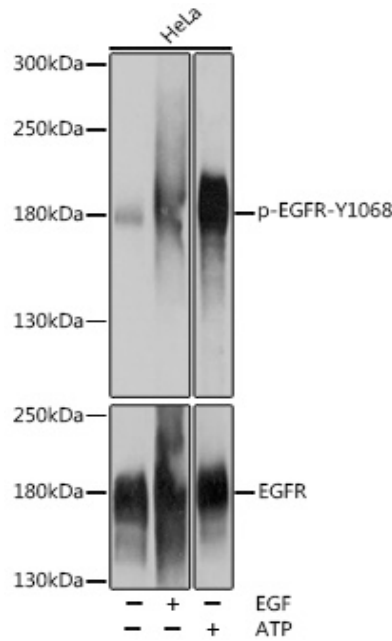
**Warranty** This product is only warranted for the specifications as described in this product sheet and only when the product is handled and stored according to instructions. User should validate this antibody in the application and tissue/cell type as required, after confirmation of integrity upon receipt is obtained by reproducing the performance as described below. Should such confirmation not be attempted, any warranty is void. In case of non-conformance, user needs to contact us immediately

**Liability** This product is for in vitro research use only. Any other applications, such as diagnostics or therapeutics, or in vivo experiments, and the validation of this product therein, are solely at the responsibility of the buyer/user.

**Product data:**

**Western Blot (WB):**

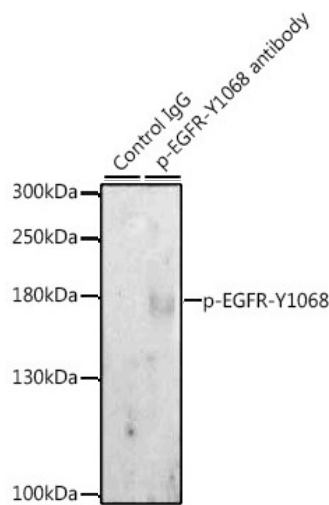
This product was successfully used to stain an approx. 180kDa band in lysates of HeLa after overnight serum-starvation and subsequent treatment with either EGF or ATP. Recommended concentration: 1-3ug/ml



Western Blot of 30ug lysate from serum-starved HeLa with or without stimulation by 100mg/ml EGF (30 min, 37C) or by 5mM ATP (1h, 30C), stained with EGFR-pY1068 Rabbit Polyclonal Antibody AE00210 at 1ug/ml (1h at ambient temp). ECL staining by HRP.

**Immunoprecipitation (IP):**

This product was successfully used to immunoprecipitate an approx. 180kDa band from lysates of EGF-stimulated A431. Recommended amount: 3-6ug.



Western Blot of immunoprecipitation (lanes 2 and 3) from 200ug A431 (30 min stimulation by 100ng/ml EGF after overnight serum-starvation) extract, using 3ug EGFR-pY1068 Rabbit Polyclonal Antibody AE00210, and using the same antibody for staining the blot at 1ug/ml (1h at ambient temp). ECL staining by HRP.