



Cat nr AE00213

Product Datasheet

Rabbit Polyclonal Phospho-Specific Antibody, EGFR-pY992 to:

EGFR, phosphorylated Y992

Epithelial Growth Factor Receptor; EGFR; ERBB; ERBB1; HER1; NISBD2; PIG61; mENA

Cellular localization	Plasma membrane, cell surface. Translocation to nucleus upon EGF stimulation.
Official Symbol (Gene)	EGFR
GeneID	1956
SwissProt	P00533

Confirmed Applications	WB
Positive controls	EGF-stimulated serum-starved A431, EGF-stimulated serum-starved NIH3T3
Customers positive feedback	
Aeonian Rating®	70

Purification	Antigen-affinity purified from serum by sequential phospho-peptide and non-phospho-peptide affinity columns
Formulation	<input type="checkbox"/> PBS, 0.02% azide, 50% glycerol
Amount	<input type="checkbox"/> 100ug <input type="checkbox"/> 200ug
Isotype	<input type="checkbox"/> Rabbit IgG
Confirmed species reactivity	<input type="checkbox"/> Human, Mouse
Immunogen	A synthetic peptide around phosphorylated Y1016 of human EGFR (NP_005219.2) corresponding to Y992 of the mature protein (starts with L25).
Epitope	A short sequence around phosphorylated Y992 (exact sequence is proprietary)

Storage instructions Avoid repeated freeze/thaw cycles. For long term storage, keep small aliquots at -20C or -80C and keep one aliquot at 4C for daily experimentations. Azide will preserve antibody at 4C for 6-12 months, when kept away from direct sun light.

Expiration Integrity warranted for 24 months after purchase when handled and stored according to instructions, see below.

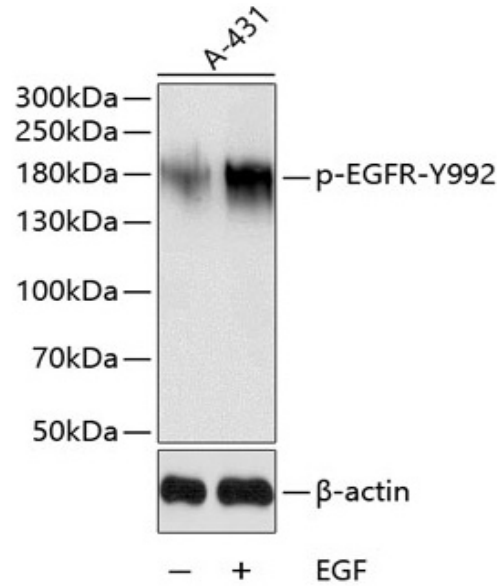
Warranty This product is only warranted for the specifications as described in this product sheet and only when the product is handled and stored according to instructions. User should validate this antibody in the application and tissue/cell type as required, after confirmation of integrity upon receipt is obtained by reproducing the performance as described below. Should such confirmation not be attempted, any warranty is void. In case of non-conformance, user needs to contact us immediately

Liability This product is for in vitro research use only. Any other applications, such as diagnostics or therapeutics, or in vivo experiments, and the validation of this product therein, are solely at the responsibility of the buyer/user.

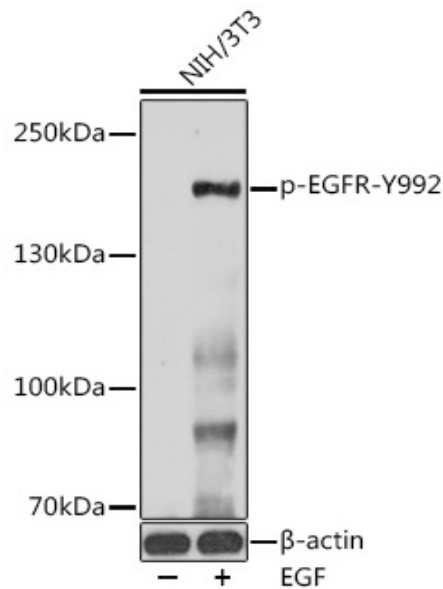
Product data:

Western Blot (WB):

This product was successfully used to stain an approx. 180kDa band in lysates of A431 and NIH3T3 after overnight serum starvation and subsequent treatment with EGF. Recommended concentration: 1-3ug/ml



Western Blot of 30ug lysate from serum-starved A431 with or without stimulation by 100mg/ml EGF (30 min, 37C), stained with EGFR-pY992 Rabbit Polyclonal Antibody AE00213 at 1ug/ml (1h at ambient temp). ECL staining by HRP.



Western Blot of 30ug lysate from serum-starved NIH3T3 with or without stimulation by 100mg/ml EGF (30 min, 37C), stained with EGFR-pY992 Rabbit Polyclonal Antibody AE00213 at 1ug/ml (1h at ambient temp). ECL staining by HRP.