



Cat nr AE00217

Product Datasheet

Rabbit Polyclonal Phospho-Specific Antibody, ESR1-pS118 to:

ESR1, phosphorylated S118

Estrogen receptor-1; Estrogen receptor alpha; Estrogen receptor-alpha; Eralpha; ER-alpha; Estradiol receptor; Nuclear receptor subfamily 3 group A member 1; ER; ESR; ESRA; ESTRR; Era; NR3A1

Cellular localization Nucleus

Official Symbol (Gene) ESR1
 GeneID 2099
 SwissProt P03372

Confirmed Applications	IHC, WB
Positive controls	Calyculin A-treated serum-starved MCF7, ER-type breast cancers
Customers positive feedback	
Aeonian Rating®	70

Purification Antigen-affinity purified from serum by sequential phospho-peptide and non-phospho-peptide affinity columns

Formulation PBS, 0.02% azide, 50% glycerol

Amount 100ug 200ug

Isotype Rabbit IgG

Confirmed species reactivity Human

Immunogen A synthetic peptide around phosphorylated S118 of human ESR1 (NP_000116.2).

Epitope A short sequence around phosphorylated S118 (exact sequence is proprietary)

Storage instructions Avoid repeated freeze/thaw cycles. For long term storage, keep small aliquots at -20C or -80C and keep one aliquot at 4C for daily experimentations. Azide will preserve antibody at 4C for 6-12 months, when kept away from direct sun light.

Expiration Integrity warranted for 24 months after purchase when handled and stored according to instructions, see below.

Warranty This product is only warranted for the specifications as described in this product sheet and only when the product is handled and stored according to instructions. User should validate this antibody in the application and tissue/cell type as required, after confirmation of integrity upon receipt is obtained by reproducing the performance as described below. Should such confirmation not be attempted, any warranty is void. In case of non-conformance, user needs to contact us immediately

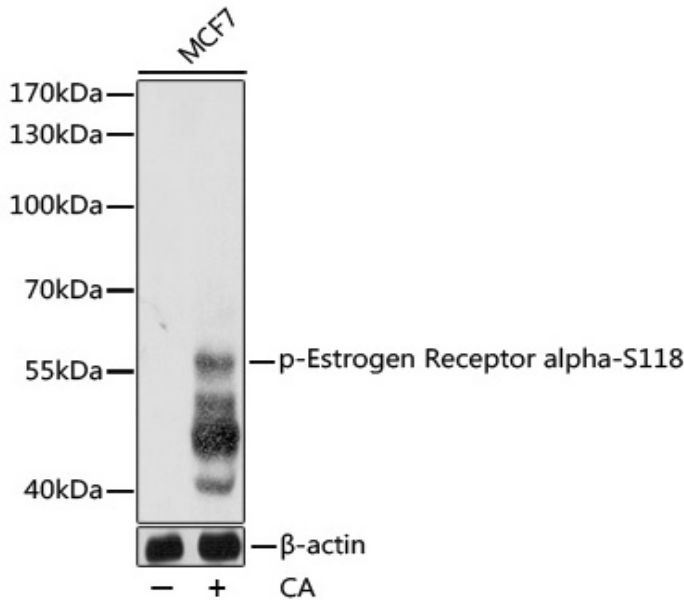
Liability This product is for in vitro research use only. Any other applications, such as diagnostics or therapeutics, or in vivo experiments, and the validation of this product therein, are solely at the responsibility of the buyer/user.

Product performance see next pages

Product data:

Western Blot (WB):

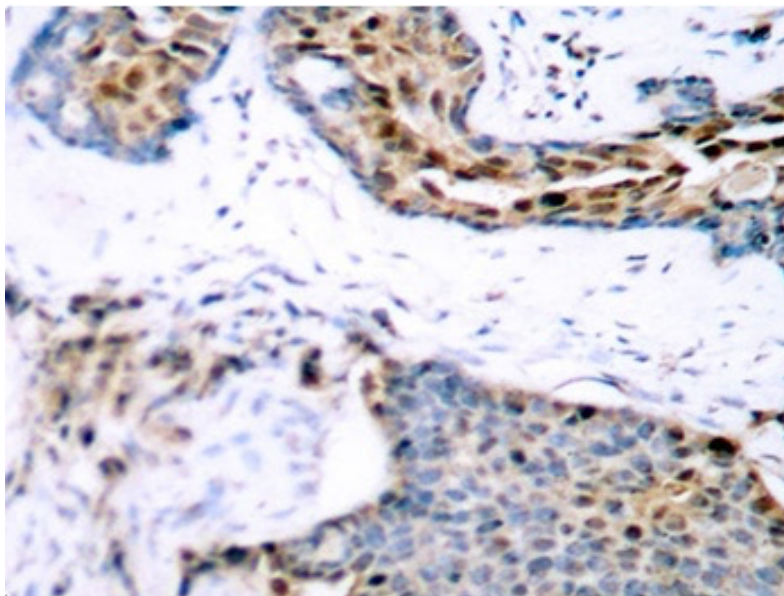
This product was successfully used to stain an approx. 56kDa band in lysates of MCF7 after overnight serum starvation and subsequent treatment with Calyculin A. Recommended concentration: 1-3ug/ml



Western Blot of 30ug lysates from serum-starved MCF7 with or without stimulation by 100nM Calyculin A (30 min, 37C), stained with ESR1-S118 Rabbit Polyclonal Antibody AE00217 at 1ug/ml (1h at ambient temp). ECL staining by HRP.

ImmunoHistoChemistry (IHC):

This product was successfully used to stain nuclei in epithelial cells of human breast carcinoma sections. Recommended concentration: 1-3ug/ml



Formaldehyde-fixed, paraffin-embedded human breast carcinoma stained with ESR1-S118 Rabbit Polyclonal Antibody AE00217 at 10ug/ml for 30 minutes at RT. Epitope retrieval: Microwave heating at pH7 to boiling, 5min at 95-98C, 1min at 100C, then cool to roomtemp. DAB staining by HRP polymer.