



**Cat nr AE00235**

## Product Datasheet

Mouse Monoclonal Antibody, clone STAT6/2410 to:

### STAT6

Signal Transducer and Activator of Transcription 6; STAT6; STAT6B; STAT6C; D12S1644; IL-4-STAT

Cellular localization                      Cytoplasm, upon phosphorylation translocated to the nucleus

Official Symbol (Gene)                      STAT6  
GeneID    6778  
SwissProt     P42226

Confirmed Applications                      IHC, PA  
Positive controls                                Human renal cell carcinoma  
Customers positive feedback  
Aeonian Rating©                                80

Purification                                      By Protein G from bioreactor concentrate  
Formulation                                      ☐ 200ug IgG/ml in PBS, 0.05% BSA, 0.05% azide (20ug or 100ug)  
    ☐ 1mg IgG/ml in PBS (100ug or contact us for quotation)  
Amount    ☐ 20ug    ☐ 100ug  
Isotype    Mouse IgG1, kappa  
Confirmed species reactivity                      Human  
Immunogen     Recombinant human full-length STAT6 protein  
  
Epitope    Unknown

Storage instructions                              Avoid repeated freeze/thaw cycles. For long term storage, keep small aliquots at -20C or -80C and keep one aliquot at 4C for daily experimentations. Azide will preserve antibody at 4C for 6-12 months, when kept away from direct sun light.

Expiration     Integrity warranted for 24 months after purchase when handled and stored according to instructions, see below.

Warranty    This product is only warranted for the specifications as described in this product sheet and only when the product is handled and stored according to instructions. User should validate this antibody in the application and tissue/cell type as required, after confirmation of integrity upon receipt is obtained by reproducing the performance as described below. Should such confirmation not be attempted, any warranty is void. In case of non-conformance, user needs to contact us immediately for replacement or refund.

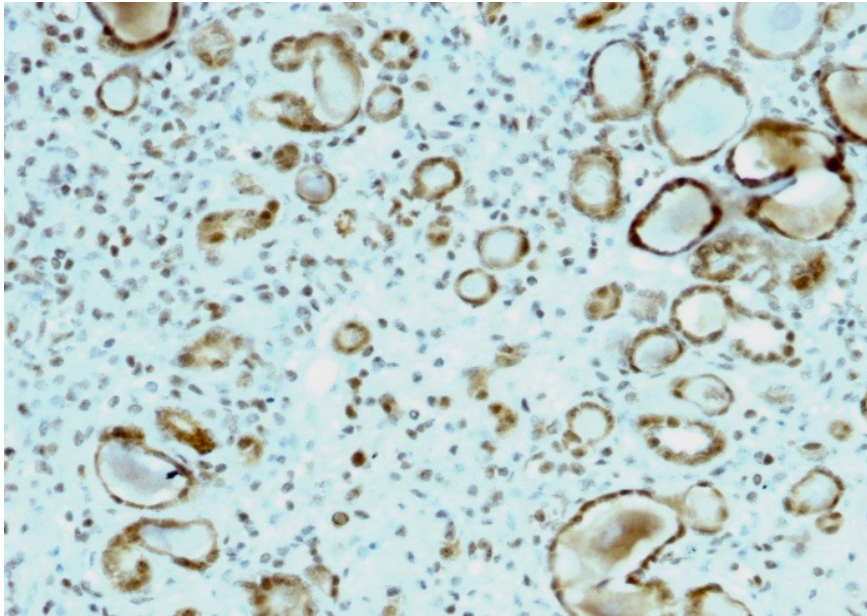
Liability    This product is for in vitro research use only. Any other applications, such as diagnostics or therapeutics, or in vivo experiments, and the validation of this product therein, are solely at the responsibility of the buyer/user.

Product performance                            see next pages

## Product data:

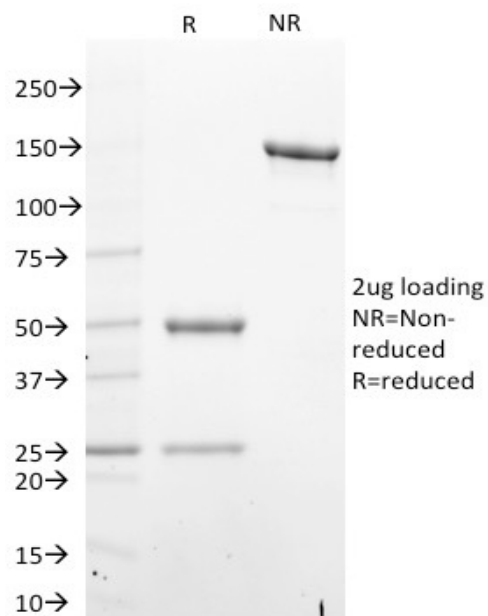
### ImmunohistoChemistry (IHC):

This product shows staining of nuclei in human renal carcinoma sections. Recommended concentration: 1-3ug/ml



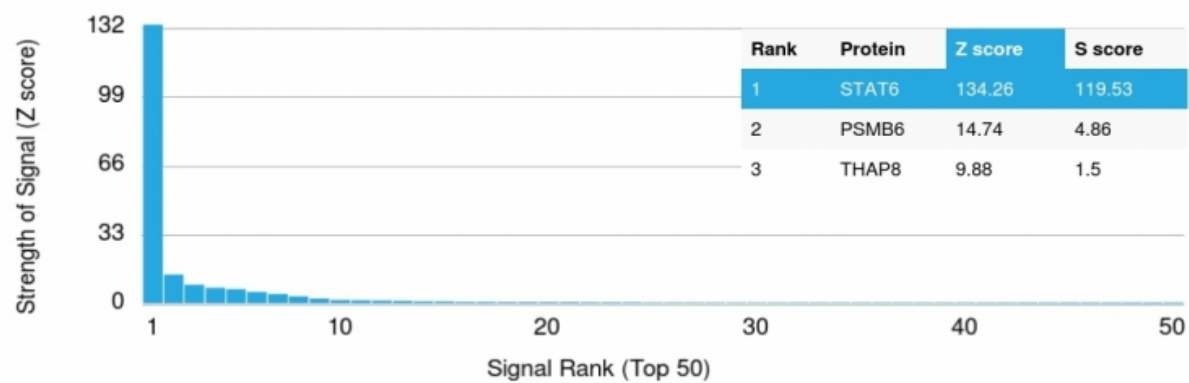
Formaldehyde-fixed, paraffin-embedded human renal carcinoma stained with STAT6 Mouse Monoclonal Antibody AE00235 at 1-2ug/ml for 30 minutes at RT. Epitope retrieval: boiling at pH6 for 10-20 min followed by 20 min cooling. DAB staining by HRP polymer.

### SDS-PAGE Analysis of Purified STAT6 Mouse Monoclonal Antibody AE00235. Confirmation of Purity and Integrity of Antibody.



Integrity of the purified antibody AE00235 under non-reduced and reduced conditions, showing intact IgG at around 150kDa (NR) and intact heavy and light chains at 50kDa and 25kDa resp. (R).

Specificity and selectivity of AE00235 to STAT6 were tested against >19,000 full-length human proteins on a human protein array. A protein BLAST search against H. sapiens revealed the following closely related proteins: STAT1, 2, 4, 5A, 5B and 6. These proteins were part of the array used and showed no cross-reactivity signals



Cross-reactivity assessment of STAT6 Mouse Monoclonal Antibody AE00235 (1ug/ml) on CDI's Protein Array containing more than 19,000 full-length human proteins.

The Z-score represents the strength of a signal that an antibody (through a fluorophore-tagged secondary reagent) produces when binding to a particular protein on the array. Z-scores are in units of standard deviations (SD's) above the mean value of all signals generated on that array. When Z-scores are arranged in descending order, the difference between two successive values will be the S-score for the first. Thus, the S-score represents the relative specificity of the antibody to its intended target. An antibody is considered specific to its intended target, when it has an S-score of at least 2.5. For example, if an antibody binds to intended protein X with a Z-score of 43 and to the cross-reacting protein Y with a next Z-score of 14, then the S-score for the antibody to intended target X equals 29 (43-14).