



## Cat nr AE00236

## Product Datasheet

Rabbit Polyclonal Phospho-Specific Antibody, STAT6-Y641 to:

### STAT6, phosphorylated Y641

Signal Transducer and Activator of Transcription 6; STAT6; STAT6B; STAT6C; D12S1644; IL-4-STAT

Cellular localization                      Cytoplasm, upon phosphorylation translocated to the nucleus

Official Symbol (Gene)                      STAT6

GeneID    6778

SwissProt     P42226

Confirmed Applications                      WB  
Positive controls                              IL4-treated HeLa  
Customers positive feedback  
Aeonian Rating©                              70

Purification                                      Antigen-affinity purified from serum by sequential phospho-peptide and non-phospho-peptide affinity columns

Formulation                                       PBS, 0.02% azide, 50% glycerol

Amount     100ug                       200ug

Isotype    Rabbit IgG

Confirmed species reactivity                Human

Immunogen                                      A synthetic peptide around phosphorylated Y641 of human STAT6 (NP\_003144.3).

Epitope    A short sequence around phosphorylated Y641 (exact sequence is proprietary).

Storage instructions                            Avoid repeated freeze/thaw cycles. For long term storage, keep small aliquots at -20C or -80C and keep one aliquot at 4C for daily experimentations. Azide will preserve antibody at 4C for 6-12 months, when kept away from direct sun light.

Expiration     Integrity warranted for 24 months after purchase when handled and stored according to instructions, see below.

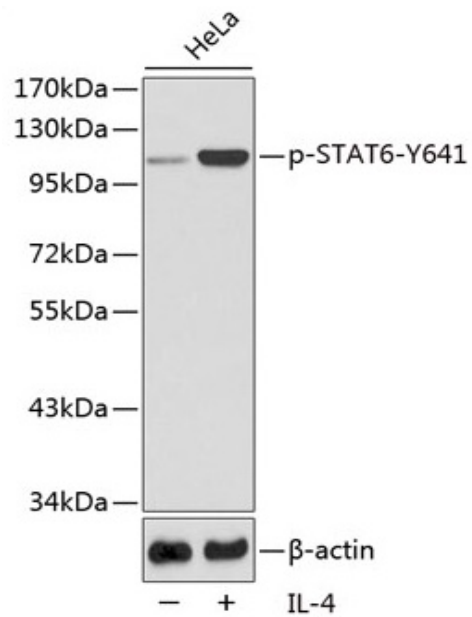
Warranty     This product is only warranted for the specifications as described in this product sheet and only when the product is handled and stored according to instructions. User should validate this antibody in the application and tissue/cell type as required, after confirmation of integrity upon receipt is obtained by reproducing the performance as described below. Should such confirmation not be attempted, any warranty is void. In case of non-conformance, user needs to contact us immediately for replacement or refund.

Liability     This product is for in vitro research use only. Any other applications, such as diagnostics or therapeutics, or in vivo experiments, and the validation of this product therein, are solely at the responsibility of the buyer/user.

**Product data:**

**Western Blot (WB):**

This product was successfully used to stain approx. 110kDa band in lysates of HeLa after IL4-treatment.  
Recommended concentration: 1-3ug/ml



Western Blots of 30ug lysates of HeLa with and without IL4 stimulation, stained with STAT6-pY7641 Rabbit Polyclonal Antibody AE00236 at 1ug/ml (1h at ambient temp). ECL staining by HRP.