



Cat nr AE00258

Product Datasheet

Mouse Monoclonal Antibody, clone ADFP/1366 to:

PLIN2, Perilipin-2

ADFP; ADRP; Adipophilin; Adipose differentiation-related protein

Cellular localization ER, plasma membrane, cytoplasmic lipid droplets.

Official Symbol (Gene) PLIN2
GenelD 123
SwissProt Q99541

Confirmed Applications	IHC, PA
Positive controls	adrenal gland
Aeonian Rating©	83
Purification	By Protein A from bioreactor concentrate
Formulation	<input type="checkbox"/> 200ug IgG/ml in PBS, 0.05% BSA, 0.05% azide (20ug or 100ug) <input type="checkbox"/> 1mg IgG/ml in PBS (100ug or contact us for quotation)
Amount	<input type="checkbox"/> 20ug <input type="checkbox"/> 100ug
Isotype	Mouse IgG2b, lambda
Confirmed species reactivity	Human
Immunogen	Recombinant fragment around aa 249-376 of human PLIN2 protein (exact sequence is proprietary)
Epitope	Within aa 249-376 region

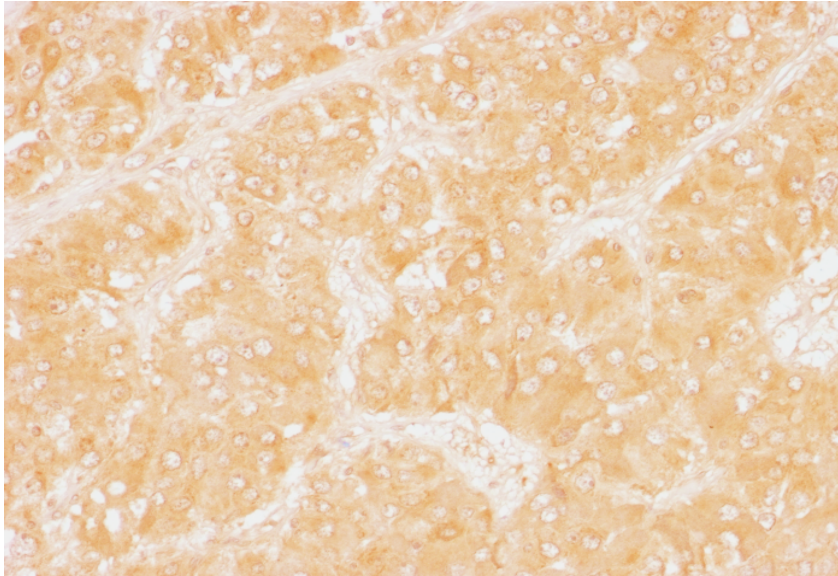
Storage instructions	Avoid repeated freeze/thaw cycles. For long term storage, keep small aliquots at -20C or -80C and keep one aliquot at 4C for daily experimentations. Azide will preserve antibody at 4C for 6-12 months, when kept away from direct sun light.
Expiration	Integrity warranted for 24 months after purchase when handled and stored according to instructions, see below.
Warranty	This product is only warranted for the specifications as described in this product sheet and only when the product is handled and stored according to instructions. User should validate this antibody in the application and tissue/cell type as required, after confirmation of integrity upon receipt is obtained by reproducing the performance as described below. Should such confirmation not be attempted, any warranty is void. In case of non-conformance, user needs to contact us immediately for replacement or refund.
Liability	This product is for in vitro research use only. Any other applications, such as diagnostics or therapeutics, or in vivo experiments, and the validation of this product therein, are solely at the responsibility of the buyer/user.

Product performance see next pages

Product data:

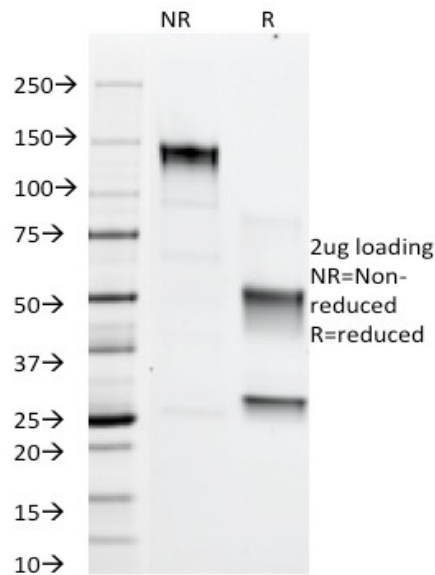
ImmunoHistoChemistry (IHC):

This product was successfully used to stain the cytoplasm of secretory cells in human adrenal gland sections. Recommended concentration: 1-3ug/ml



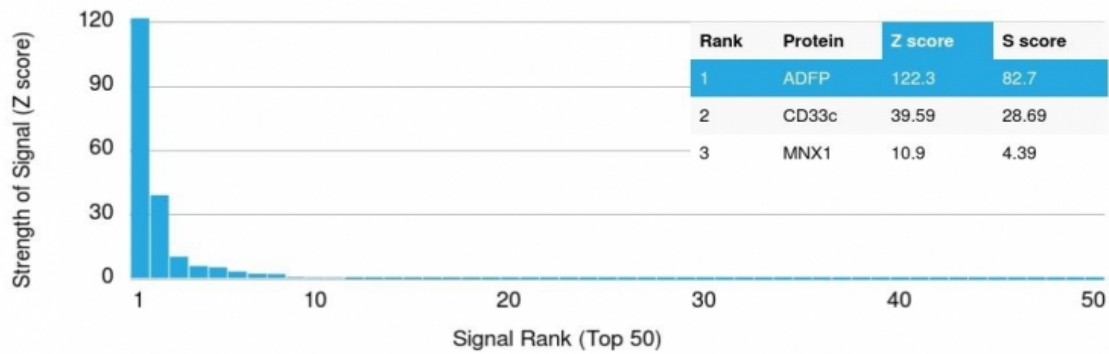
Formaldehyde-fixed, paraffin-embedded human adrenal gland stained with PLIN2 Mouse Monoclonal Antibody AE00258 at 1-2ug/ml for 30 minutes at RT. Epitope retrieval: boiling at pH6 for 10-20 min followed by 20 min cooling. DAB staining by HRP polymer.

SDS-PAGE Analysis of Purified PLIN2 Mouse Monoclonal Antibody AE00258. Confirmation of Purity and Integrity of Antibody.



Integrity of the purified antibody AE00258 under non-reduced and reduced conditions, showing intact IgG at around 140kDa (NR) and intact heavy and light chains at 50kDa and 28kDa resp. (R).

Specificity and selectivity of AE00258 to PLIN2 were tested against >19,000 full-length human proteins on a human protein array. A protein BLAST search against H. sapiens revealed the following closely related protein: PLIN1, 3 and 4. The proteins PLIN1 and 3 were part of the array used and showed no cross-reactivity signals.



Cross-reactivity assessment of PLIN2 Mouse Monoclonal Antibody AE00258 (1ug/ml) on CDI's Protein Array containing more than 19,000 full-length human proteins.

The Z-score represents the strength of a signal that an antibody (through a fluorophore-tagged secondary reagent) produces when binding to a particular protein on the array. Z-scores are in units of standard deviations (SD's) above the mean value of all signals generated on that array. When Z-scores are arranged in descending order, the difference between two successive values will be the S-score for the first. Thus, the S-score represents the relative specificity of the antibody to its intended target. An antibody is considered specific to its intended target, when it has an S-score of at least 2.5. For example, if an antibody binds to intended protein X with a Z-score of 43 and to the cross-reacting protein Y with a next Z-score of 14, then the S-score for the antibody to intended target X equals 29 (43-14).