



## Cat nr AE00286

Recombinant Rabbit Antibody, clone PTH/2295R to:

## PTH, parathyroid hormone

Parathormone; Parathyrin; Parathyroid Hormone; PTH1; PECAM1

## Product Datasheet

Cellular localization                      Secreted

Official Symbol (Gene)                    PECAM1

GenelD                                        5741

SwissProt                                    P01270

Confirmed Applications                    IHC, PA  
Positive controls                          Parathyroid gland

Aeonian Rating©                          90

Purification                                By Protein A from bioreactor concentrate  
Formulation                                 200ug IgG/ml in PBS, 0.05% BSA, 0.05% azide (20ug or 100ug)  
     1mg IgG/ml in PBS (100ug or contact us for quotation)  
Amount                                         20ug                                         100ug  
Isotype                                        Rabbit IgG  
Confirmed species reactivity            Human  
Immunogen                                 Recombinant fragment around aa 32-115 of human mature PTH protein (exact sequence is proprietary)  
Epitope                                        Unknown

Storage instructions                      Avoid repeated freeze/thaw cycles. For long term storage, keep small aliquots at -20C or -80C and keep one aliquot at 4C for daily experimentations. Azide will preserve antibody at 4C for 6-12 months, when kept away from direct sun light.

Expiration                                 Integrity warranted for 24 months after purchase when handled and stored according to instructions, see below.

Warranty                                    This product is only warranted for the specifications as described in this product sheet and only when the product is handled and stored according to instructions. User should validate this antibody in the application and tissue/cell type as required, after confirmation of integrity upon receipt is obtained by reproducing the performance as described below. Should such confirmation not be attempted, any warranty is void. In case of non-conformance, user needs to contact us immediately for replacement or refund.

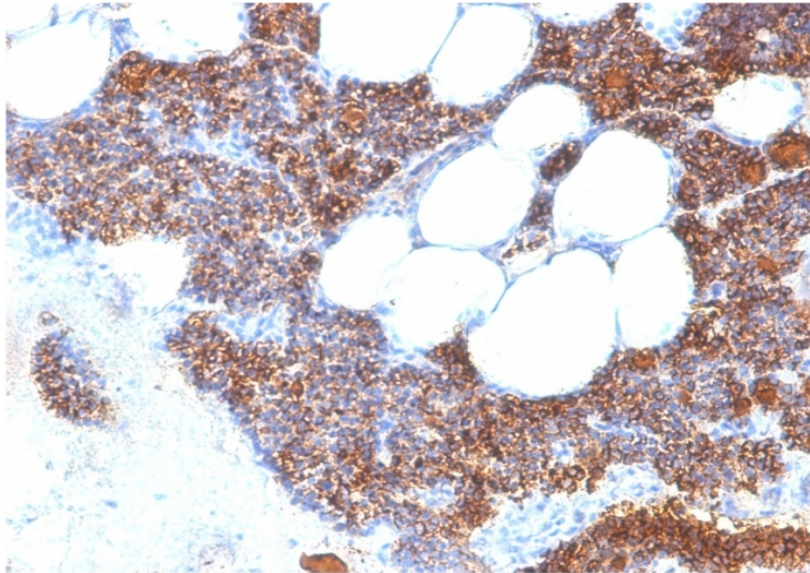
Liability                                    This product is for in vitro research use only. Any other applications, such as diagnostics or therapeutics, or in vivo experiments, and the validation of this product therein, are solely at the responsibility of the buyer/user.

Product performance                      see next pages

**Product data:**

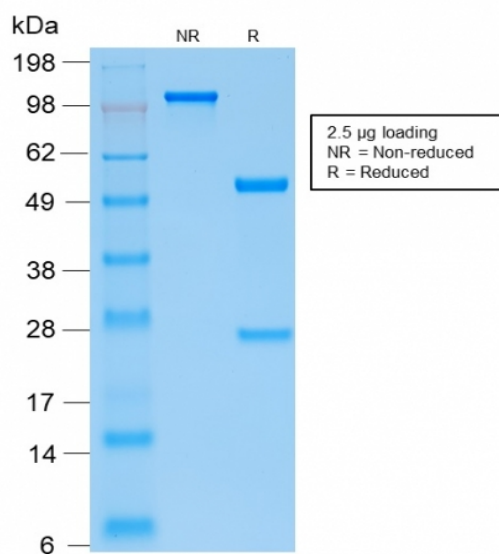
**ImmunoHistoChemistry (IHC):**

This product was successfully used to stain hormone-producing principle cells in human parathyroid gland sections. Recommended concentration: 1-3ug/ml



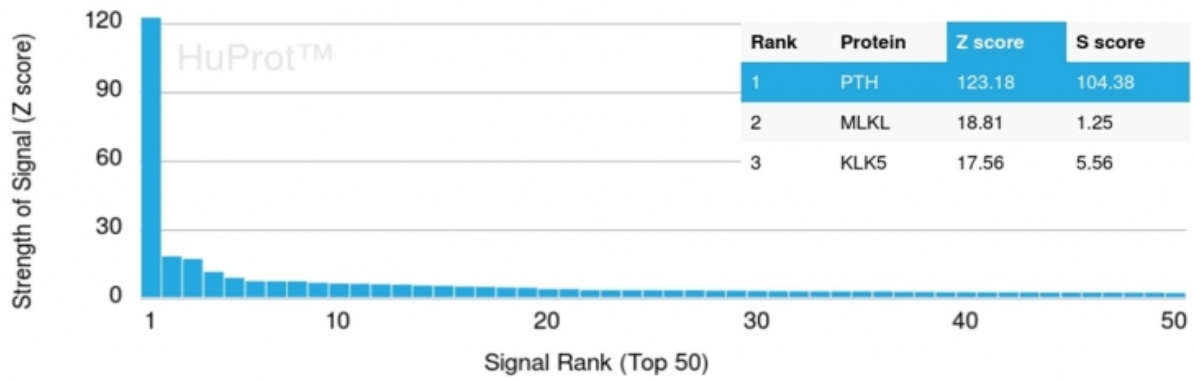
Formaldehyde-fixed, paraffin-embedded human parathyroid gland stained with PTH Rabbit Recombinant Antibody AE00286 at 1-2ug/ml for 30 minutes at RT. Epitope retrieval:boiling at pH9 for 10-20 min followed by 20 min cooling. DAB staining by HRP polymer.

**SDS-PAGE Analysis of Purified PTH Rabbit Recombinant Antibody AE00286. Confirmation of Purity and Integrity of Antibody.**



Integrity of the purified antibody AE00286 under non-reduced and reduced conditions, showing intact IgG at around 120kDa (NR) and intact heavy and light chains at 50kDa and 25kDa resp. (R).

Specificity and selectivity of AE00286 to PTH were tested against >19,000 full-length human proteins on a human protein array. A protein BLAST search against H. sapiens revealed no closely related other proteins.



Cross-reactivity assessment of PTH Rabbit Recombinant Antibody AE00286 (1ug/ml) on CDI's Protein Array containing more than 19,000 full-length human proteins.

The Z-score represents the strength of a signal that an antibody (through a fluorophore-tagged secondary reagent) produces when binding to a particular protein on the array. Z-scores are in units of standard deviations (SD's) above the mean value of all signals generated on that array. When Z-scores are arranged in descending order, the difference between two successive values will be the S-score for the first. Thus, the S-score represents the relative specificity of the antibody to its intended target. An antibody is considered specific to its intended target, when it has an S-score of at least 2.5. For example, if an antibody binds to intended protein X with a Z-score of 43 and to the cross-reacting protein Y with a next Z-score of 14, then the S-score for the antibody to intended target X equals 29 (43-14).