



Cat nr AE00294

Product Datasheet

Rabbit Polyclonal Phospho-Specific Antibody, FUNDC1-pS17 to:

FUNDC1, phosphorylated S17

FUN14 domain containing 1

Cellular localization Mitochondria

Official Symbol (Gene) FUNDC1

GenelD 139341

SwissProt Q8IVP5

Confirmed Applications WB
Positive controls breast carcinoma

Aeonian Rating® 70

Purification Antigen-affinity purified from serum by sequential phospho-peptide and non-phospho-peptide affinity columns.

Formulation 1 mg IgG/ml in PBS, 0.02% azide, 50% glycerol

Amount 200ug 100ug

Isotype Rabbit IgG

Confirmed species reactivity Human

Immunogen A synthetic peptide around phosphorylated S17 of human FUNDC1 (NP_776155.1).

Epitope A short sequence around phosphorylated S17 (exact sequence is proprietary)

Storage instructions Avoid repeated freeze/thaw cycles. For long term storage, keep small aliquots at -20C or -80C and keep one aliquot at 4C for daily experimentations. Azide will preserve antibody at 4C for 6-12 months, when kept away from direct sun light.

Expiration Integrity warranted for 24 months after purchase when handled and stored according to instructions, see below.

Warranty This product is only warranted for the specifications as described in this product sheet and only when the product is handled and stored according to instructions. User should validate this antibody in the application and tissue/cell type as required, after confirmation of integrity upon receipt is obtained by reproducing the performance as described below. Should such confirmation not be attempted, any warranty is void. In case of non-conformance, user needs to contact us immediately for replacement or refund.

Liability This product is for in vitro research use only. Any other applications, such as diagnostics or therapeutics, or in vivo experiments, and the validation of this product therein, are solely at the responsibility of the buyer/user.

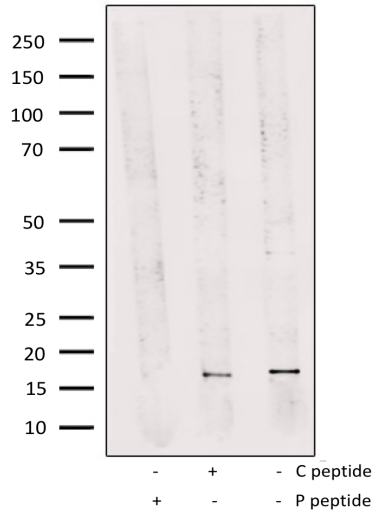
Product performance see next pages

Product data:

Western Blot (WB):

This product was successfully used to stain an approx. 17kDa band in lysates of human breast carcinoma.

Recommended concentration: 1-3ug/ml



Western Blot of human breast carcinoma lysates (10ug) stained with FUNDC1-pS17 Polyclonal Antibody AE00294 at 1-2ug/ml (overnight at 4°C) in the presence (+) or absence (-) of its antigen (P peptide) or its non-phosphorylated control (C peptide). ECL staining by HRP.