



Cat nr AE00296

Product Datasheet

Rabbit Polyclonal Phospho-Specific Antibody, AKT1-pS124 to:

AKT1, phosphorylated S124

AKT; CWS6; PKB; PKB-ALPHA; PKBalpha; PRKBA; RAC; RAC-ALPHA; RAC-alpha serine/threonine-protein kinase; Protein kinase B; Protein kinase B alpha; Proto-oncogene c-Akt; RAC-PK-alpha

Cellular localization Nucleus, intracellular vesicles and plasma membrane

Official Symbol (Gene) AKT1

GeneID 207

SwissProt P31749

Confirmed Applications ICC, IHC, WB
Positive controls LPS-treated HeLa, Anisomycin-stimulated C6

Aeonian Rating® 70

Purification Antigen-affinity purified from serum by sequential phospho-peptide and non-phospho-peptide affinity columns.

Formulation 1 mg IgG/ml in PBS, 0.02% azide, 50% glycerol

Amount 100ug 200ug

Isotype Rabbit IgG

Confirmed species reactivity Human, mouse and rat

Immunogen A synthetic peptide around phosphorylated S124 of human AKT1 (NP_005154.2).

Epitope A short sequence around phosphorylated S124 (exact sequence is proprietary)

Storage instructions Avoid repeated freeze/thaw cycles. For long term storage, keep small aliquots at -20C or -80C and keep one aliquot at 4C for daily experimentations. Azide will preserve antibody at 4C for 6-12 months, when kept away from direct sun light.

Expiration Integrity warranted for 24 months after purchase when handled and stored according to instructions, see below.

Warranty This product is only warranted for the specifications as described in this product sheet and only when the product is handled and stored according to instructions. User should validate this antibody in the application and tissue/cell type as required, after confirmation of integrity upon receipt is obtained by reproducing the performance as described below. Should such confirmation not be attempted, any warranty is void. In case of non-conformance, user needs to contact us immediately for replacement or refund.

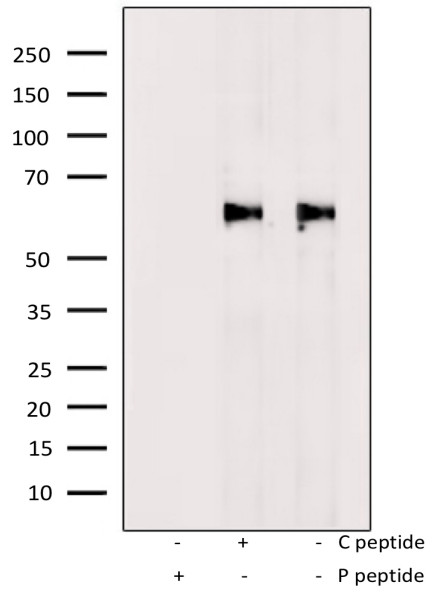
Liability This product is for in vitro research use only. Any other applications, such as diagnostics or therapeutics, or in vivo experiments, and the validation of this product therein, are solely at the responsibility of the buyer/user.

Product performance see next pages

Product data:

Western Blot (WB):

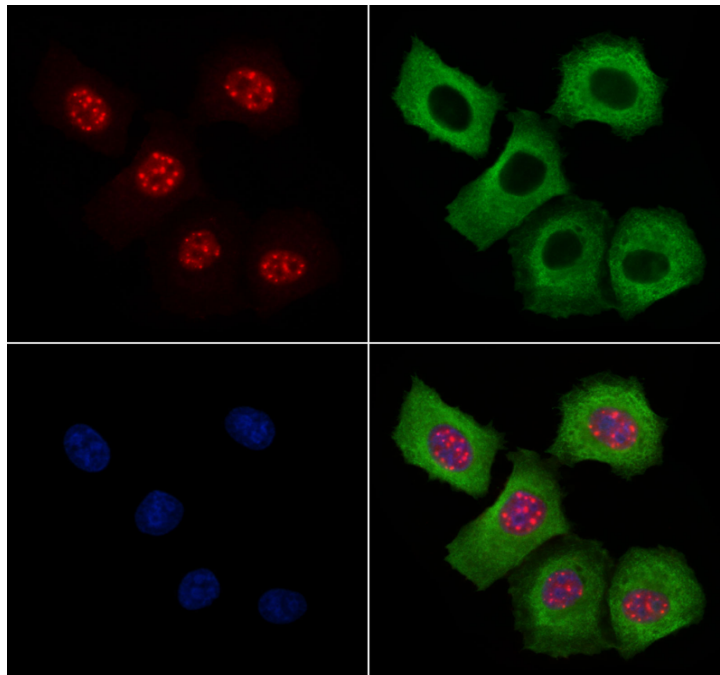
This product was successfully used to stain an approx. 60kDa band in lysates of Anisomycin-stimulated C6. Recommended concentration: 1-3ug/ml



Western Blot of 10ug Anisomycin-stimulated C6 lysates stained with AKT1-S124 Rabbit Polyclonal Antibody AE00296 at 1ug/ml (overnight at 4°C) in the presence (+) or absence (-) of its antigen (P peptide) or its non-phosphorylated control (C peptide). ECL staining by HRP.

ImmunoCytoChemistry (ICC):

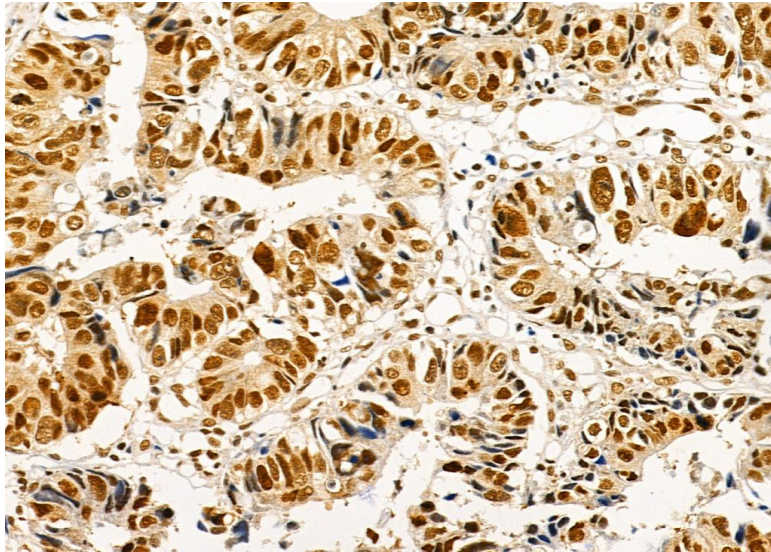
This product shows nuclear staining in LPS-treated cell line HeLa. Recommended concentration: 5-15ug/ml



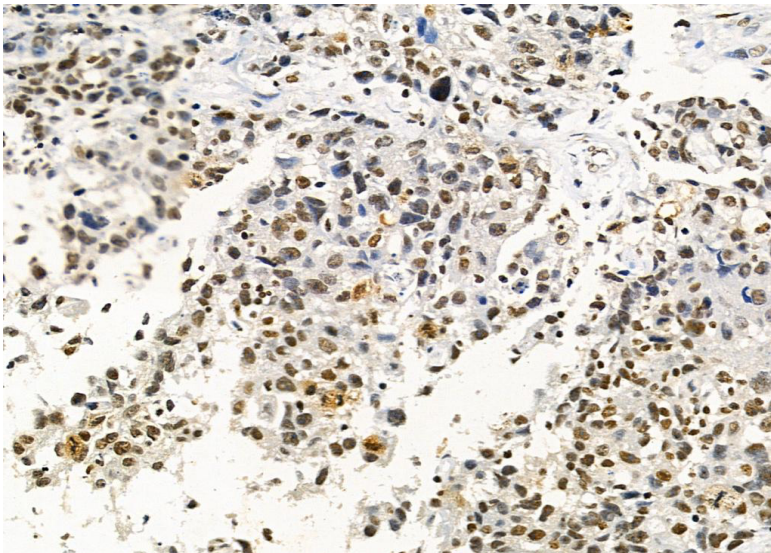
Confocal microscopy of PFA-fixed, and LPS-treated for 4h, HeLa (0.1% TX100 permeabilised) stained with AKT1-pS124 Rabbit Polyclonal Antibody AE00296 at 5ug/ml (1h at 37°C). Detection by AF594 (red) for the AKT1-pS124 rabbit antibody, AF488 (green) for beta-tubulin mouse antibody, and DAPI (blue) for nuclear staining.

ImmunoHistoChemistry (IHC):

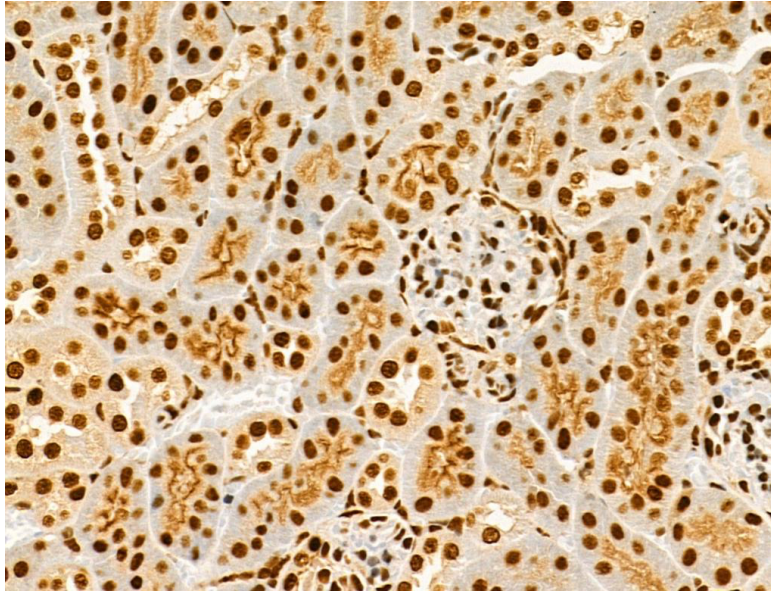
This product shows nuclear staining in several human carcinoma sections and in all tested normal tissue sections of mouse and rat. Recommended concentration: 5-15ug/ml



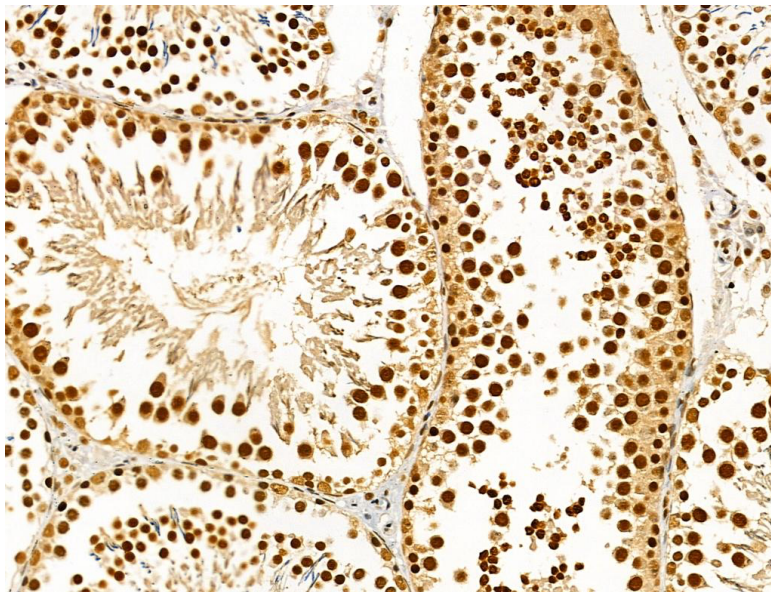
Formaldehyde-fixed, paraffin-embedded human colorectal carcinoma stained with AKT1-pS124 Rabbit Polyclonal Antibody AE00296 at 10ug/ml overnight at 4°C. Epitope retrieval: Pressure cooker heating at pH6 for 3min, then cool by running cold water for 10min. DAB staining by HRP.



Formaldehyde-fixed, paraffin-embedded human breast carcinoma stained with AKT1-pS124 Rabbit Polyclonal Antibody AE00296 at 10ug/ml overnight at 4°C. Epitope retrieval: Pressure cooker heating at pH6 for 3min, then cool by running cold water for 10min. DAB staining by HRP.



Formaldehyde-fixed, paraffin-embedded mouse kidney stained with AKT1-pS124 Rabbit Polyclonal Antibody AE00296 at 10ug/ml overnight at 4°C. Epitope retrieval: Pressure cooker heating at pH6 for 3min, then cool by running cold water for 10min. DAB staining by HRP.



Formaldehyde-fixed, paraffin-embedded rat testis stained with AKT1-pS124 Rabbit Polyclonal Antibody AE00296 at 10ug/ml overnight at 4°C. Epitope retrieval: Pressure cooker heating at pH6 for 3min, then cool by running cold water for 10min. DAB staining by HRP.