



Cat nr AE00298

Product Datasheet

Rabbit Polyclonal Phospho-Specific Antibody, BRCA1-pS1524 to:

BRCA1, phosphorylated S1524

Breast cancer type 1 susceptibility protein; RING finger protein 53; RING-type E3 ubiquitin transferase BRCA1; BRCAI; BRCA-1; BRCC1; BROVCA1; FANCS; IRIS; PNCA4; PPP1R53; PSCP; RNF53

Cellular localization Nucleus

Official Symbol (Gene) BRCA1

GeneID 672

SwissProt P383984

Confirmed Applications	IHC, ICC, WB
Positive controls	LPS-treated HepG2, mouse brain
Customers positive feedback	
Aeonian Rating®	70

Purification Antigen-affinity purified from serum by sequential phospho-peptide and non-phospho-peptide affinity columns.

Formulation 1mg IgG/ml in PBS, 0.02% azide, 50% glycerol

Amount 100ug 200ug

Isotype Rabbit IgG

Confirmed species reactivity Human, Mouse

Immunogen A synthetic peptide around phosphorylated S1524 of human BRCA1 (NP_009225.1).

Epitope A short sequence around phosphorylated S1524 (exact sequence is proprietary)

Storage instructions Avoid repeated freeze/thaw cycles. For long term storage, keep small aliquots at -20C or -80C and keep one aliquot at 4C for daily experimentations. Azide will preserve antibody at 4C for 6-12 months, when kept away from direct sun light.

Expiration Integrity warranted for 24 months after purchase when handled and stored according to instructions, see below.

Warranty This product is only warranted for the specifications as described in this product sheet and only when the product is handled and stored according to instructions. User should validate this antibody in the application and tissue/cell type as required, after confirmation of integrity upon receipt is obtained by reproducing the performance as described below. Should such confirmation not be attempted, any warranty is void. In case of non-conformance, user needs to contact us immediately for replacement or refund.

Liability This product is for in vitro research use only. Any other applications, such as diagnostics or therapeutics, or in vivo experiments, and the validation of this product therein, are solely at the responsibility of the buyer/user.

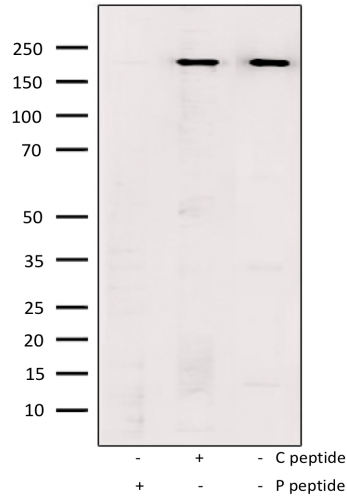
Product performance see next pages

Product data:

Western Blot (WB):

This product was successfully used to stain an approx. 200kDa band in lysates of mouse brain.

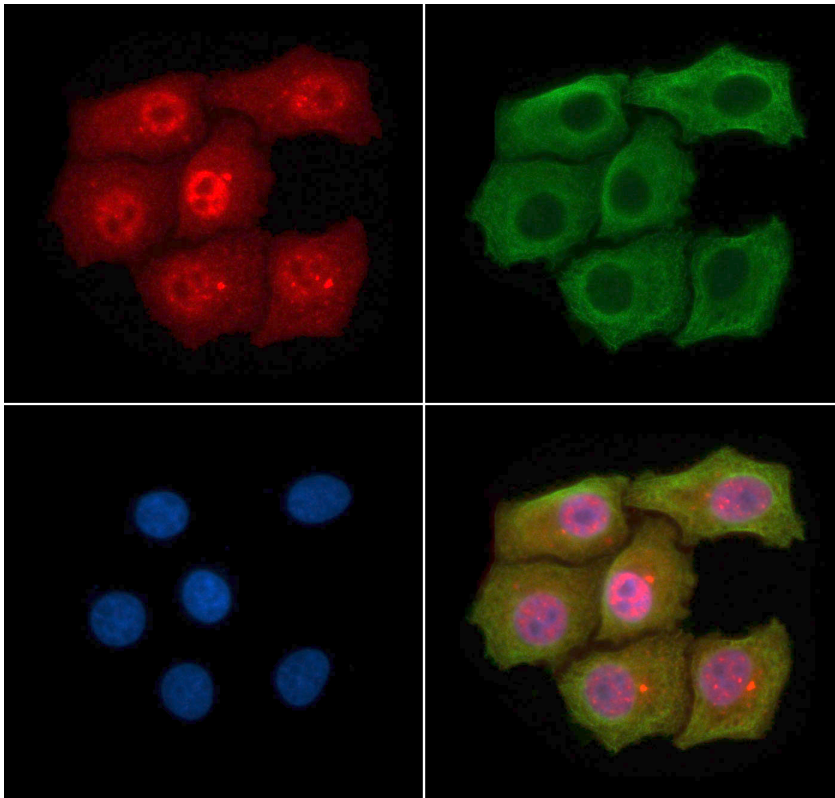
Recommended concentration: 1-3ug/ml



Western Blot of 10ug mouse brain lysates stained with BRCA1-pS1524 Rabbit Polyclonal Antibody AE00298 at 1ug/ml (overnight at 4°C) in the presence (+) or absence (-) of its antigen (P peptide) or its non-phosphorylated control (C peptide). ECL staining by HRP.

ImmunoCytoChemistry (ICC):

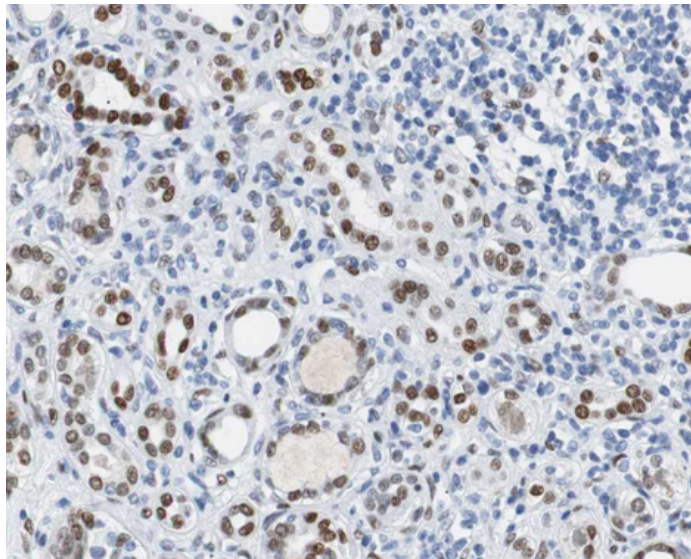
This product shows nuclear staining in LPS-treated cell line HepG2. Recommended concentration: 5-15ug/ml



Confocal microscopy of HepG2 (LPS-treated for 4h) stained with BRCA1-pS1524 Rabbit Polyclonal Antibody AE00298 at 5ug/ml (1h at 37°C). Detection by AF594 (red) for the rabbit BRCA1-pS1524 antibody, AF488 (green) for the mouse beta-tubulin antibody and DAPI (blue) for nuclear staining.

ImmunoHistoChemistry (IHC):

This product shows nuclear staining in human kidney carcinoma sections. Recommended concentration: 5-15ug/ml



Formaldehyde-fixed, paraffin-embedded human kidney carcinoma stained with BRCA1-pS1524 Rabbit Polyclonal Antibody AE00298 at 10ug/ml for 1.5h at ambient temperature. Epitope retrieval: Pressure cooker heating at pH6 for 3min, then cool by running cold water for 10min. DAB staining by HRP.