



Cat nr AE00304

Product Datasheet

Rabbit Polyclonal Phospho-Specific Antibody, EGFR-pY1068 to:

EGFR, phosphorylated Y1068

Epithelial Growth Factor Receptor; EGFR; ERBB; ERBB1; HER1; NISBD2; PIG61; mENA

Cellular localization	Plasma membrane, cell surface. Translocation to nucleus upon EGF stimulation.
Official Symbol (Gene)	EGFR
GeneID	1956
SwissProt	P00533

Confirmed Applications	ICC, IHC, WB
Positive controls	LPS-treated HepG2, rat liver
Customers positive feedback	
Aeonian Rating®	70

Purification	Antigen-affinity purified from serum by sequential phospho-peptide and non-phospho-peptide affinity columns.
Formulation	<input type="checkbox"/> 1 mg IgG/ml in PBS, 0.02% azide, 50% glycerol
Amount	<input type="checkbox"/> 100ug <input type="checkbox"/> 200ug
Isotype	Rabbit IgG
Confirmed species reactivity	Human, mouse, rat
Immunogen	A synthetic peptide around phosphorylated Y1092 of human EGFR (NP_005219.2) corresponding to Y1068 of the mature protein (starts with L25).
Epitope	A short sequence around phosphorylated Y1068 (exact sequence is proprietary)

Storage instructions	Avoid repeated freeze/thaw cycles. For long term storage, keep small aliquots at -20C or -80C and keep one aliquot at 4C for daily experimentations. Azide will preserve antibody at 4C for 6-12 months, when kept away from direct sun light.
----------------------	--

Expiration	Integrity warranted for 24 months after purchase when handled and stored according to instructions, see below.
------------	--

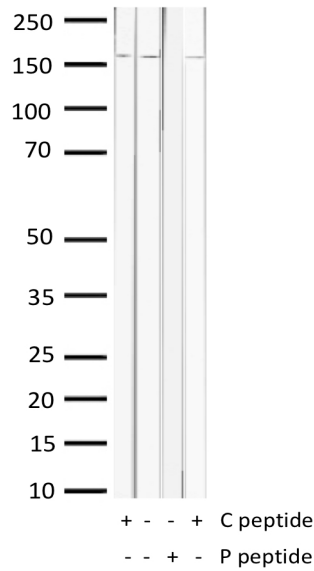
Warranty	This product is only warranted for the specifications as described in this product sheet and only when the product is handled and stored according to instructions. User should validate this antibody in the application and tissue/cell type as required, after confirmation of integrity upon receipt is obtained by reproducing the performance as described below. Should such confirmation not be attempted, any warranty is void. In case of non-conformance, user needs to contact us immediately for replacement or refund.
----------	--

Liability	This product is for in vitro research use only. Any other applications, such as diagnostics or therapeutics, or in vivo experiments, and the validation of this product therein, are solely at the responsibility of the buyer/user.
-----------	--

Product data:

Western Blot (WB):

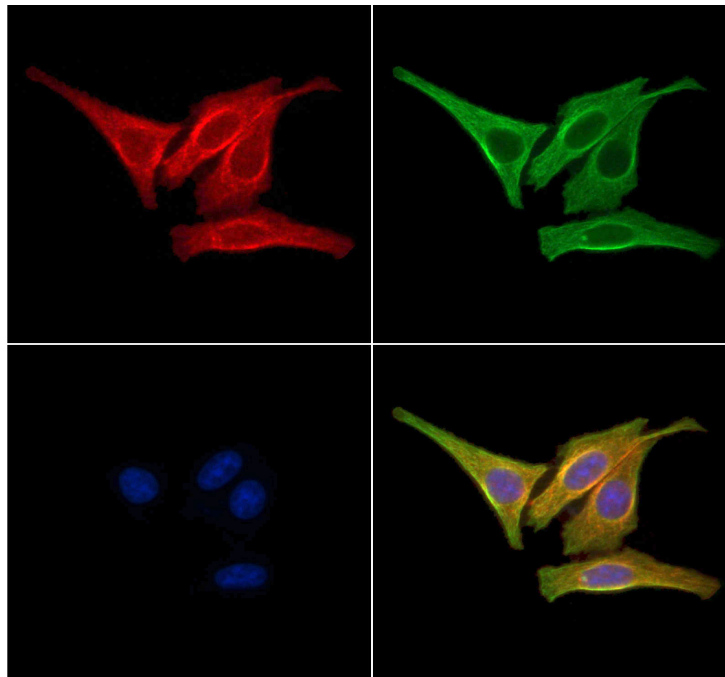
This product was successfully used to stain an approx. 160kDa band in mouse and rat liver lysates.
Recommended concentration: 1-3ug/ml



Western Blot of 10ug liver lysates from mouse (lanes 1 and 2) and rat (lanes 3 and 4) stained with EGFR-pY1068 Rabbit Polyclonal Antibody AE00304 at 1ug/ml (overnight at 4°C) in the presence (+) or absence (-) of its antigen (P peptide) or its non-phosphorylated control (C peptide). ECL staining by HRP.

ImmunoCytoChemistry (ICC):

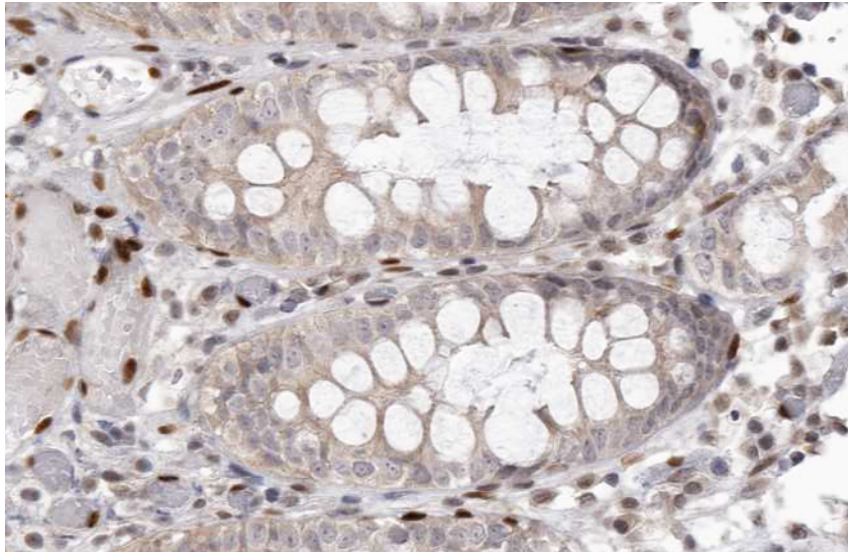
This product shows nuclear membrane staining in LPS-treated cell line HepG2. Recommended concentration: 5-15ug/ml



Confocal microscopy of PFA-fixed, and LPS-treated for 4h, HepG2 (0.1% TX100 permeabilised) stained with EGFR-pY1068 Rabbit Polyclonal Antibody AE00304 at 5ug/ml (1h at 37°C). Detection by AF594 (red) for the EGFR-pY1068 rabbit antibody, AF488 (green) for beta-tubulin mouse antibody, and DAPI (blue) for nuclear staining.

ImmunoHistoChemistry (IHC):

This product shows nuclear staining in human colon carcinoma sections . Recommended concentration: 5-15ug/ml



Formaldehyde-fixed, paraffin-embedded human colorectal carcinoma stained with EGFR-pY1068 Rabbit Polyclonal Antibody AE00304 at 10ug/ml 1.5h at ambient temperature. Epitope retrieval: Pressure cooker heating at pH6 for 3min, then cool by running cold water for 10min. DAB staining by HRP.