



## Cat nr AE00309

## Product Datasheet

Rabbit Polyclonal Phospho-Specific Antibody, EGFR-pY1173 to:

### EGFR, phosphorylated Y1173

Epithelial Growth Factor Receptor; EGFR; ERBB; ERBB1; HER1; NISBD2; PIG61; mENA

Cellular localization Plasma membrane, cell surface. Translocation to nucleus upon EGF stimulation.

Official Symbol (Gene) EGFR

GeneID 1956

SwissProt P00533

Confirmed Applications ICC, WB  
Positive controls Rat liver, LPS-treated HepG2  
Customers positive feedback  
Aeonian Rating® 70

Purification Antigen-affinity purified from serum by sequential phospho-peptide and non-phospho-peptide affinity columns.

Formulation  1 mg IgG/ml in PBS, 0.02% azide, 50% glycerol

Amount  100ug  200ug

Isotype Rabbit IgG

Confirmed species reactivity Human, mouse, rat

Immunogen A synthetic peptide around phosphorylated Y1197 of human EGFR (NP\_005219.2) corresponding to Y1173 of the mature protein (starts with L25).

Epitope A short sequence around phosphorylated Y1173 (exact sequence is proprietary)

Storage instructions Avoid repeated freeze/thaw cycles. For long term storage, keep small aliquots at -20C or -80C and keep one aliquot at 4C for daily experimentations. Azide will preserve antibody at 4C for 6-12 months, when kept away from direct sun light.

Expiration Integrity warranted for 24 months after purchase when handled and stored according to instructions, see below.

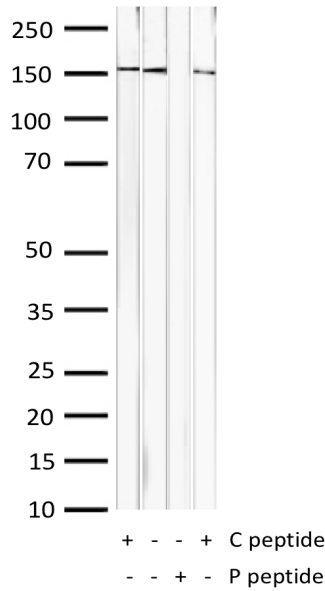
Warranty This product is only warranted for the specifications as described in this product sheet and only when the product is handled and stored according to instructions. User should validate this antibody in the application and tissue/cell type as required, after confirmation of integrity upon receipt is obtained by reproducing the performance as described below. Should such confirmation not be attempted, any warranty is void. In case of non-conformance, user needs to contact us immediately for replacement or refund.

Liability This product is for in vitro research use only. Any other applications, such as diagnostics or therapeutics, or in vivo experiments, and the validation of this product therein, are solely at the responsibility of the buyer/user.

**Product data:**

**Western Blot (WB):**

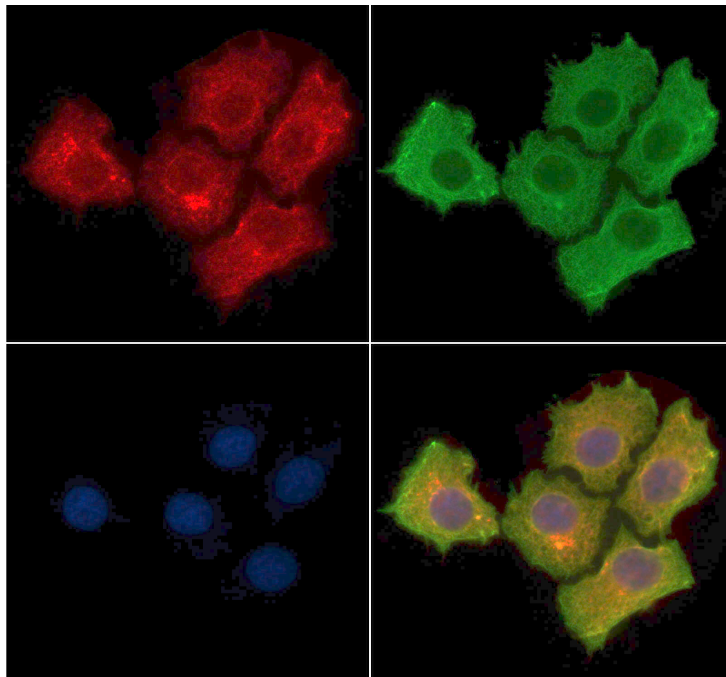
This product was successfully used to stain an approx. 160kDa band in mouse and rat liver lysates.  
Recommended concentration: 1-3ug/ml



Western Blot of 10ug liver lysates from mouse (lanes 1 and 2) and rat (lanes 3 and 4) stained with EGFR-pY1173 Rabbit Polyclonal Antibody AE00309 at 1ug/ml (overnight at 4°C) in the presence (+) or absence (-) of its antigen (P peptide) or its non-phosphorylated control (C peptide). ECL staining by HRP.

**ImmunoCytoChemistry (ICC):**

This product shows Golgi/ER staining near the nucleus in LPS-treated cell line HepG2. Recommended concentration: 5-15ug/ml



Confocal microscopy of PFA-fixed, and LPS-treated for 4h, HepG2 (0.1% TX100 permeabilised) stained with EGFR-pY1173 Rabbit Polyclonal Antibody AE00309 at 5ug/ml (1h at 37°C). Detection by AF594 (red) for the EGFR-pY1173 rabbit antibody, AF488 (green) for beta-tubulin mouse antibody, and DAPI (blue) for nuclear staining.