



Recombinant Version of Classic Clone

Cat nr AE00320

Product Datasheet

Rabbit Recombinant Antibody, F2CR to:

TUBA1A, tubulin alpha 1A

Alpha-tubulin 3; Tubulin alpha-1A chain; Tubulin alpha-3 chain; Tubulin B-alpha-1; B-ALPHA-1; LIS3; TUBA1A; TUBA3;

Cellular localization Cytoskeleton

Official Symbol (Gene) TUBA1A

GenelD 7846

SwissProt Q71U36

Confirmed Applications ICC, IHC, WB
Positive controls Human brain, HeLa

Aeonian Rating© 80

Purification By Protein A from bioreactor concentrate

Formulation 1 mg IgG/ml in PBS with 0.02% Proclin 300

Amount 200ug 1000ug

Isotype Rabbit IgG, lambda, new chimeric version based on scFv clone F2C

Confirmed species reactivity Human

Immunogen Original scFv screened from the naïve human phagemid library

Griffin.1

Epitope Unknown

Storage instructions Avoid repeated freeze/thaw cycles. For long term storage, keep small aliquots at -20C or -80C and keep one aliquot at 4C for daily experimentations. Azide will preserve antibody at 4C for 6-12 months, when kept away from direct sun light.

Expiration Integrity warranted for 24 months after purchase when handled and stored according to instructions, see below.

Warranty This product is only warranted for the specifications as described in this product sheet and only when the product is handled and stored according to instructions. User should validate this antibody in the application and tissue/cell type as required, after confirmation of integrity upon receipt is obtained by reproducing the performance as described below. Should such confirmation not be attempted, any warranty is void. In case of non-conformance, user needs to contact us immediately for replacement or refund.

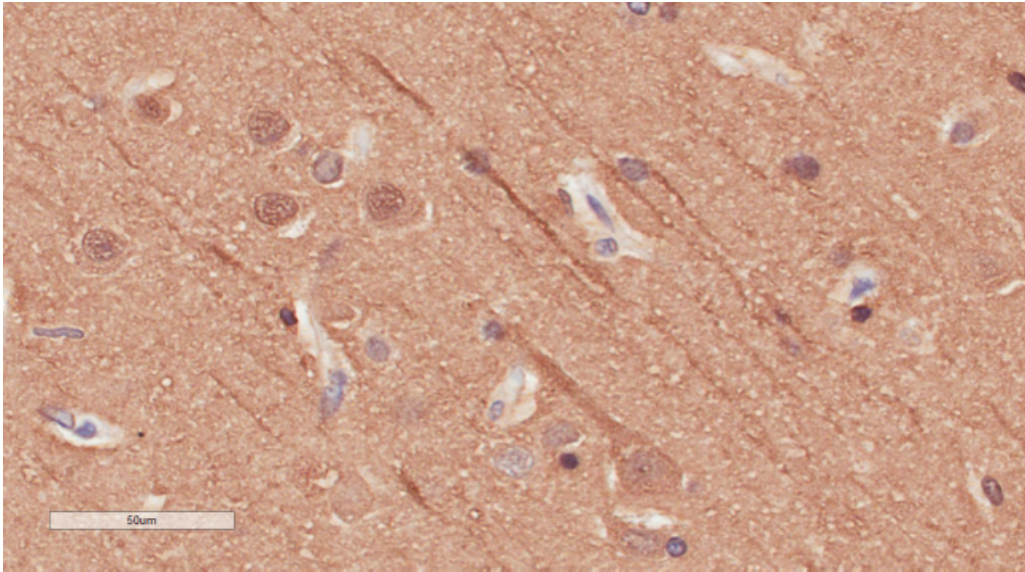
Liability This product is for in vitro research use only. Any other applications, such as diagnostics or therapeutics, or in vivo experiments, and the validation of this product therein, are solely at the responsibility of the buyer/user.

Product performance see next pages

Product data:

ImmunoHistoChemistry (IHC):

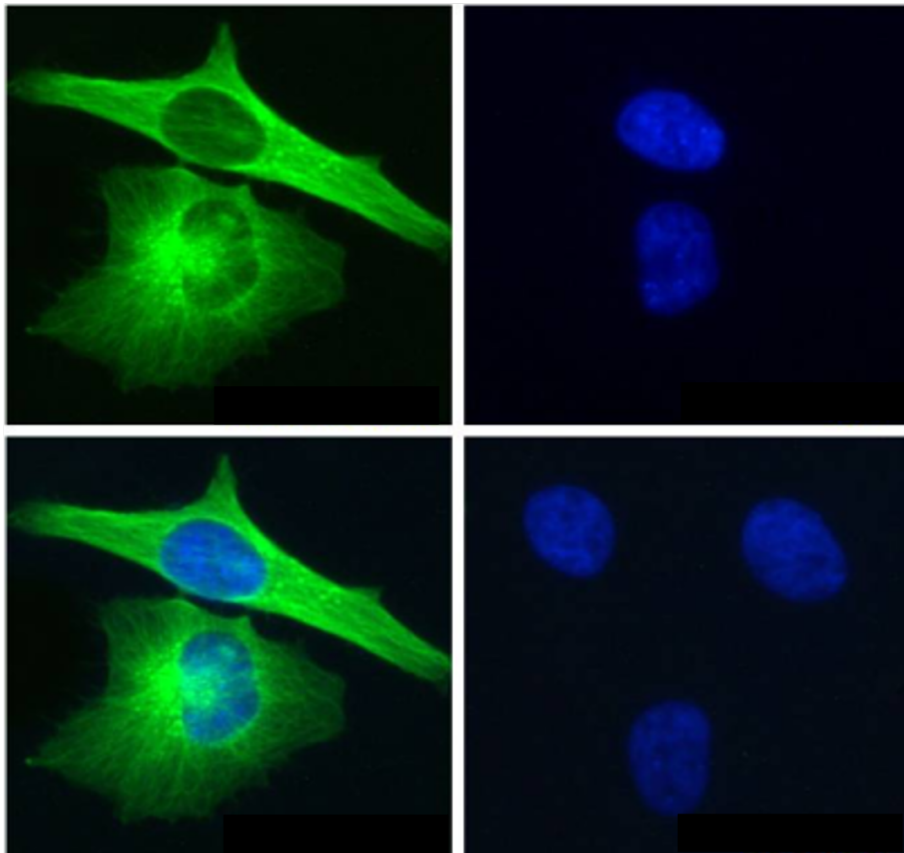
This product was successfully used to stain the neuronal processes in human cerebral cortex sections.
Recommended concentration: 2-6ug/ml



Formaldehyde-fixed, paraffin-embedded human cerebral cortex stained with TUBA1A Rabbit Recombinant Antibody AE00320 at 4ug/ml for 30 minutes at RT. Epitope retrieval: Microwaving at pH6 for 10-20 min followed by 20 min cooling. DAB staining by HRP polymer.

ImmunoCytoChemistry (ICC):

This product was successfully used to stain cytoskeleton in HeLa. Recommended concentration: 5-15ug/ml



Confocal microscopy of PFA-fixed and 0.15% Triton X-100 permeabilised HeLa cells stained with TUBA1A Rabbit Recombinant Antibody AE00320 at 10ug/ml for 1h at RT. Detection by CF488 (green) for the antibody and DAPI (blue) for nuclear staining. Bottom right shows staining with an isotype control antibody.

The original scFc clone F2C was successfully used to stain the cytoskeleton of cell line HeLa.

Nizak C, Martin-Lluesma S, Moutel S, Roux A, Kreis TE, Goud B, Perez F. Recombinant antibodies against subcellular fractions used to track endogenous Golgi protein dynamics in vivo. *Traffic*. 2003 Nov;4(11):739-53. doi: 10.1034/j.1600-0854.2003.00132.x. PMID: 14617357.

Human, mouse and rabbit chimeric IgG of scFc clone F2C were successfully used to stain the cytoskeleton of cell line HeLa.

Moutel S, El Marjou A, Vielemeyer O, Nizak C, Benaroch P, Dübel S, Perez F. A multi-Fc-species system for recombinant antibody production. *BMC Biotechnol*. 2009 Feb 26;9:14. doi: 10.1186/1472-6750-9-14. PMID: 19245715.

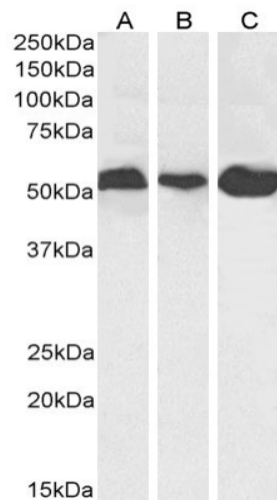
Marschall AL, Zhang C, Frenzel A, Schirrmann T, Hust M, Perez F, Dübel S. Delivery of antibodies to the cytosol: debunking the myths. *MAbs*. 2014 Jul-Aug;6(4):943-56. doi: 10.4161/mabs.29268. Epub 2014 May 21. PMID: 24848507; PMCID: PMC4171028.

Ly N, Elkhatib N, Bresteau E, Piétremont O, Khaled M, Magiera MM, Janke C, Le Cam E, Rutenberg AD, Montagnac G. α TAT1 controls longitudinal spreading of acetylation marks from open microtubules extremities. *Sci Rep*. 2016 Oct 18;6:35624. doi: 10.1038/srep35624. PMID: 27752143; PMCID:

Western Blot (WB):

Western Blot (WB):

This product was successfully used to stain an approx. 55kDa band in lysates of cell lines HeLa, HEK293 and HePG2. Recommended concentration: 0.01-0.03ug/ml



Western Blot of lysates (35ug) from HeLa (A), HEK293 (B) and HepG2 (C) stained with TUBA1A Rabbit Recombinant Antibody AE00320 at 0.01ug/ml (1h at ambient temp). ECL staining by HRP.

The original scFc clone F2C was successfully used on microtubulin-binding proteins purified from cell line HeLa.

Nizak C, Martin-Lluesma S, Moutel S, Roux A, Kreis TE, Goud B, Perez F. Recombinant antibodies against subcellular fractions used to track endogenous Golgi protein dynamics in vivo. *Traffic*. 2003 Nov;4(11):739-53. doi: 10.1034/j.1600-0854.2003.00132.x. PMID: 14617357.

Human, mouse and rabbit chimeric IgG of scFc clone F2C were successfully used on lysates of cell line HeLa.

Moutel S, El Marjou A, Vielemeyer O, Nizak C, Benaroch P, Dübel S, Perez F. A multi-Fc-species system for