



TMA-validated antibodies

Cat nr AE00343

Product Datasheet

Rabbit Recombinant Antibody, AE919R to:

ACE2

Angiotensin converting enzyme 2; Angiotensin-converting enzyme homolog; Angiotensin-converting enzyme-related carboxypeptidase; ACE-related carboxypeptidase; Coronavirus receptor; Metalloprotease MPROT15; ACE2; ACEH

Cellular localization plasma membrane, secreted

Official Symbol (Gene) ACE2
GenelD 59272
SwissProt Q9BYF1

Confirmed Applications	IHC
Positive controls	duodenum, endothelial cells, gallbladder, kidney, ovary, small intestine, testis, renal carcinoma
Aeonian Rating©	95

Purification By Protein A from bioreactor concentrate

Formulation 0.2 mg IgG/ml in PBS with 0.5% BSA & 0.05% azide.
 0.2 mg IgG/ml in PBS with 0.05% azide, without BSA.

Amount 200ug 1000ug
Isotype Rabbit IgG, kappa

Confirmed species reactivity Human
Immunogen Recombinant fragment around aa 705-805 of human ACE2 (exact sequence is proprietary)
Epitope aa 705-805

Storage instructions Avoid repeated freeze/thaw cycles. For long term storage, keep small aliquots at -20C or -80C and keep one aliquot at 4C for daily experimentations. Azide will preserve antibody at 4C for 6-12 months, when kept away from direct sun light.

Expiration Integrity warranted for 24 months after purchase when handled and stored according to instructions, see below.

Warranty This product is only warranted for the specifications as described in this product sheet and only when the product is handled and stored according to instructions. User should validate this antibody in the application and tissue/cell type as required, after confirmation of integrity upon receipt is obtained by reproducing the performance as described below. Should such confirmation not be attempted, any warranty is void. In case of non-conformance, user needs to contact us immediately for replacement or refund.

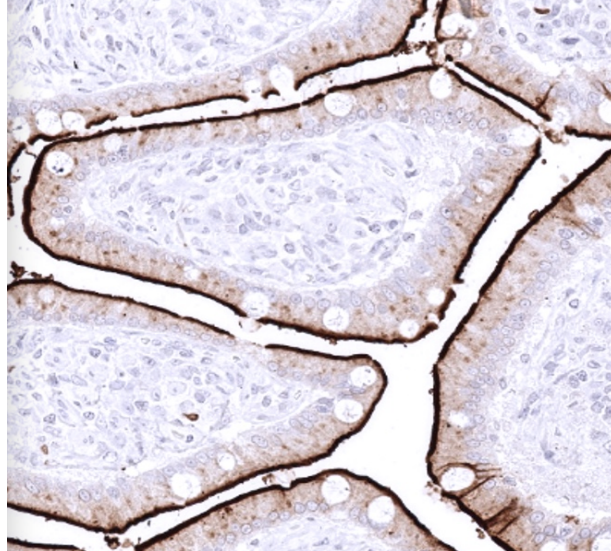
Liability This product is for in vitro research use only. Any other applications, such as diagnostics or therapeutics, or in vivo experiments, and the validation of this product therein, are solely at the responsibility of the buyer/user.

Product performance see next pages

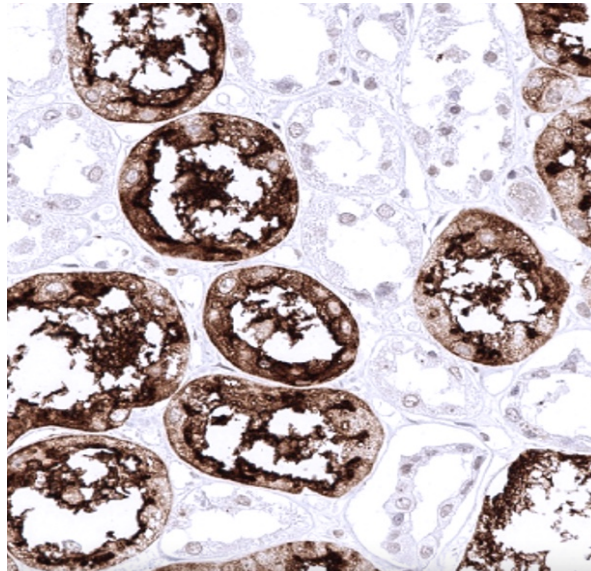
Product data:

Immunohistochemistry (IHC):

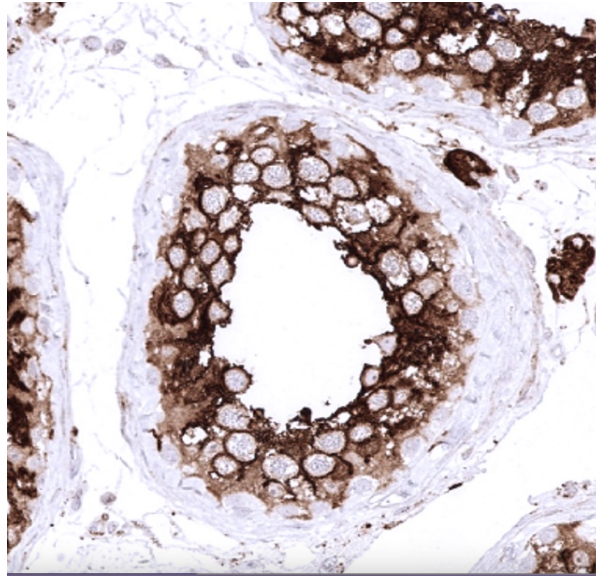
This product was successfully used to stain epithelial surface of human duodenum sections, proximal tubuli in human kidney sections, and Leydig cells plus spermatocytes in human testis sections.



Formaldehyde-fixed, paraffin-embedded human duodenum stained with ACE2 Rabbit Recombinant Antibody AE00343 at 1-2ug/ml for 60 minutes at 37°C. Epitope retrieval: Autoclave at 121°C, pH7.8 for 5 min followed by 20 min cooling. DAB staining by HRP polymer.



Formaldehyde-fixed, paraffin-embedded human kidney stained with ACE2 Rabbit Recombinant Antibody AE00343 at 1-2ug/ml for 60 minutes at 37°C. Epitope retrieval: Autoclave at 121°C, pH7.8 for 5 min followed by 20 min cooling. DAB staining by HRP polymer.



Formaldehyde-fixed, paraffin-embedded human testis stained with ACE2 Rabbit Recombinant Antibody AE00343 at 1-2ug/ml for 60 minutes at 37°C. Epitope retrieval: Autoclave at 121°C, pH7.8 for 5 min followed by 20 min cooling. DAB staining by HRP polymer.

Tissue Microarray Validation:

Normal tissues

Strong positive

cardial endothelium
 corpus luteum
 duodenum mucosa
 endothelial cells
 gallbladder
 ileum mucosa
 renal proximal tubuli
 testis

Weak to moderate

adrenal gland
 appendix mucosa
 appendix muscular wall
 colon
 epididymis
 fallopian tube
 heart muscle
 myometrium
 pancreas
 placenta
 rectum mucosa
 renal medula
 seminal vesicles
 stomach
 thyroid gland

No staining at all

adipose
 aorta, media
 bone marrow
 breast
 cerebellum
 cerebrum
 duodenum Brunner gland
 endocervix
 endometrium
 epidermis
 esophageal squamous epithelium
 liver
 lung
 lymph node
 ovarian stroma
 parathyroid
 parotid gland
 pituitary gland
 prostate
 renal medulla
 skeletal muscle
 skin
 spleen
 thymus
 tonsil
 urothelium

Cancer tissues

Strong positive	Weak to moderate	No staining at all
adrenocortical adenoma	cholangiocarcinoma	breast cancer no special type
capillaries in ACE2-negative	prostate adenocarcinomas	chromophobe renal cell carcinoma
neuroendocrine tumour	urothelial carcinoma	high-grade serous carcinoma
capillaries in ACE2-negative		renal oncocytoma
thyroid medullary carcinoma		seminoma
clear cell renal cell carcinoma		
colorectal adenocarcinoma		
esophageal adenocarcinoma		
gastric adenocarcinoma		
hepatic cholangiocellular carcinoma		
papillary renal cell carcinoma		