



TMA-validated antibodies

Cat nr AE00345

Product Datasheet

Rabbit Recombinant Antibody, AE516R to:

CDH16

Cadherin-16; Cadherin 16; Kidney-specific cadherin; Ksp-cadherin; CDH16

Cellular localization cell surface, plasma membrane

Official Symbol (Gene) CDH16
GenelD 1014
SwissProt O75309

Confirmed Applications IHC
Positive controls kidney, renal carcinoma

Aeonian Rating© 90

Purification By Protein A from bioreactor concentrate

Formulation 0.2 mg IgG/ml in PBS with 0.5% BSA & 0.05% azide.
 0.2 mg IgG/ml in PBS with 0.05% azide, without BSA.

Amount 200ug 1000ug
Isotype Rabbit IgG

Confirmed species reactivity Human
Immunogen Recombinant full-length human CDH16 protein.

Epitope unknown

Storage instructions Avoid repeated freeze/thaw cycles. For long term storage, keep small aliquots at -20C or -80C and keep one aliquot at 4C for daily experimentations. Azide will preserve antibody at 4C for 6-12 months, when kept away from direct sun light.

Expiration Integrity warranted for 24 months after purchase when handled and stored according to instructions, see below.

Warranty This product is only warranted for the specifications as described in this product sheet and only when the product is handled and stored according to instructions. User should validate this antibody in the application and tissue/cell type as required, after confirmation of integrity upon receipt is obtained by reproducing the performance as described below. Should such confirmation not be attempted, any warranty is void. In case of non-conformance, user needs to contact us immediately for replacement or refund.

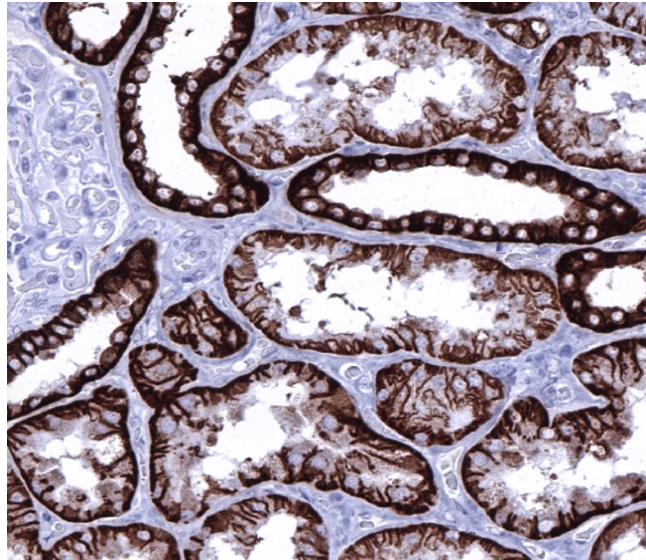
Liability This product is for in vitro research use only. Any other applications, such as diagnostics or therapeutics, or in vivo experiments, and the validation of this product therein, are solely at the responsibility of the buyer/user.

Product performance see next pages

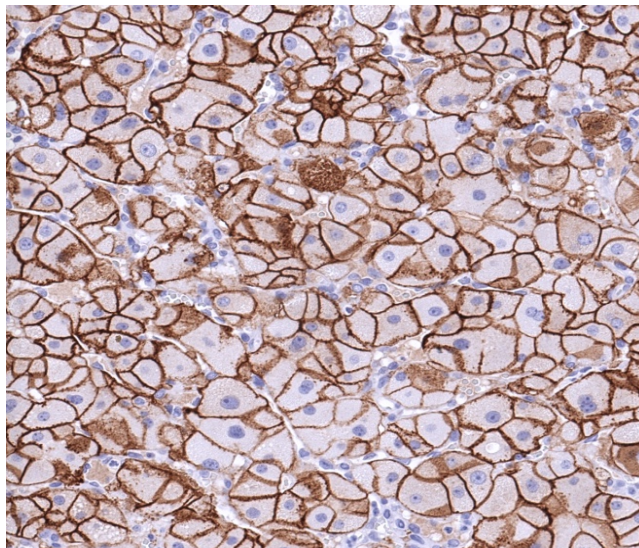
Product data:

Immunohistochemistry (IHC):

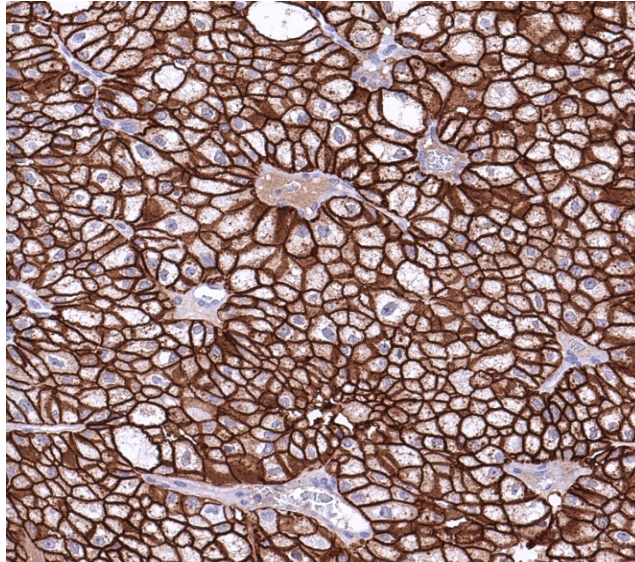
This product was successfully used to stain membranes in epithelial cells of convoluted tubules (very strong in distal ones) in human healthy kidney sections, and membranes of oncocytoma and renal carcinoma sections. Recommended concentration: 1-3ug/ml



Formaldehyde-fixed, paraffin-embedded human kidney stained with CDH16 Rabbit Recombinant Antibody AE00345 at 1-2ug/ml for 60 minutes at 37°C. Epitope retrieval: Autoclave at 121°C, pH7.8 for 5 min followed by 20 min cooling. DAB staining by HRP polymer.



Formaldehyde-fixed, paraffin-embedded human renal oncocytoma stained with CDH16 Rabbit Recombinant Antibody AE00345 at 1-2ug/ml for 60 minutes at 37°C. Epitope retrieval: Autoclave at 121°C, pH7.8 for 5 min followed by 20 min cooling. DAB staining by HRP polymer.



Formaldehyde-fixed, paraffin-embedded human renal carcinoma stained with CDH16 Rabbit Recombinant Antibody AE00345 at 1-2ug/ml for 60 minutes at 37°C. Epitope retrieval: Autoclave at 121°C, pH7.8 for 5 min followed by 20 min cooling. DAB staining by HRP polymer.

Tissue Microarray Validation:

Normal tissues

Strong positive

epididymis, cauda
 kidney
 thyroid gland

Weak to moderate

endometrium, proliferative
 fallopian tube
 gallbladder
 seminal vesicle

No staining at all

adipose
 adrenal gland
 aorta, media
 appendix mucosa
 appendix muscular wall
 bone marrow
 breast
 bronchus, glands
 cerebellum
 cerebrum
 colon mucosa
 colon muscular wall
 duodenum Brunner glands
 duodenum mucosa
 ectocervix
 endocervix
 endometrium, secretory
 epididymis, caput
 esophagus squamous epithelium
 heart muscle
 ileum mucosa
 liver
 lung
 lymph node
 myometrium
 ovarian stroma

pancreas
 parathyroid glands
 parotid gland
 pituitary gland, anterior+
 posterior
 placenta
 prostate
 rectal mucosa
 skeletal muscle
 skin
 spleen
 stomach
 testis
 thymus
 tonsil
 urinary bladder, muscular wall
 urothelium

Cancer tissues

Strong positive

cervix adenocarcinoma
 chromophobe renal cell
 carcinoma
 clear cell ovarian carcinoma
 endometrioid endometrial
 carcinoma
 endometrioid ovarian carcinoma
 lung neuroendocrine tumor
 renal oncocytoma
 thyroid follicular adenoma

Weak to moderate

clear cell renal cell carcinoma
 pancreas neuroendocrine tumor
 papillary renal cell carcinoma

No staining at all

adrenocortical adenoma
 esophageal adenocarcinoma
 hepatocellular carcinoma
 high-grade serous carcinoma
 Hodgkin's lymphoma
 leiomyosarcoma
 liposarcoma
 lung adenocarcinoma
 lung small cell carcinoma
 lung squamous cell carcinoma
 prostate adenocarcinoma
 stomach adenocarcinoma
 stomach gastrointestinal stromal
 tumor
 testis seminoma
 thyroid follicular carcinoma
 thyroid medullary carcinoma
 thyroid papillary carcinoma
 urothelial carcinoma
 Warthin tumor
