



TMA-validated antibodies

**Cat nr AE00347**

**Product Datasheet**

Rabbit Recombinant Antibody, AE455R to:

## Calponin 1

Basic calponin; Calponin 1; Calponin-1; Calponin H1, smooth muscle; CNN1; HEL-S-14; SMCC; Sm-Calp

Cellular localization cytoskeleton

Official Symbol (Gene) CNN1  
GenelD 1264  
SwissProt P51911

Confirmed Applications IHC  
Positive controls smooth muscle cells

Aeonian Rating© 95

Purification By Protein A from bioreactor concentrate

Formulation  0.2 mg IgG/ml in PBS with 0.5% BSA & 0.05% azide.  
 0.2 mg IgG/ml in PBS with 0.05% azide, without BSA.

Amount  200ug  1000ug  
Isotype Rabbit IgG

Confirmed species reactivity Human  
Immunogen Synthetic peptide corresponding to the C-terminus of human Calponin

Epitope C-terminus

Storage instructions Avoid repeated freeze/thaw cycles. For long term storage, keep small aliquots at -20C or -80C and keep one aliquot at 4C for daily experimentations. Azide will preserve antibody at 4C for 6-12 months, when kept away from direct sun light.

Expiration Integrity warranted for 24 months after purchase when handled and stored according to instructions, see below.

Warranty This product is only warranted for the specifications as described in this product sheet and only when the product is handled and stored according to instructions. User should validate this antibody in the application and tissue/cell type as required, after confirmation of integrity upon receipt is obtained by reproducing the performance as described below. Should such confirmation not be attempted, any warranty is void. In case of non-conformance, user needs to contact us immediately for replacement or refund.

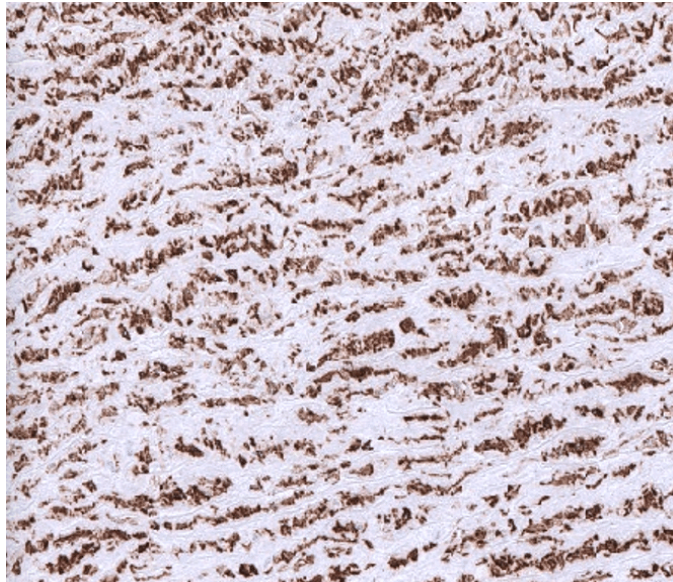
Liability This product is for in vitro research use only. Any other applications, such as diagnostics or therapeutics, or in vivo experiments, and the validation of this product therein, are solely at the responsibility of the buyer/user.

Product performance see next pages

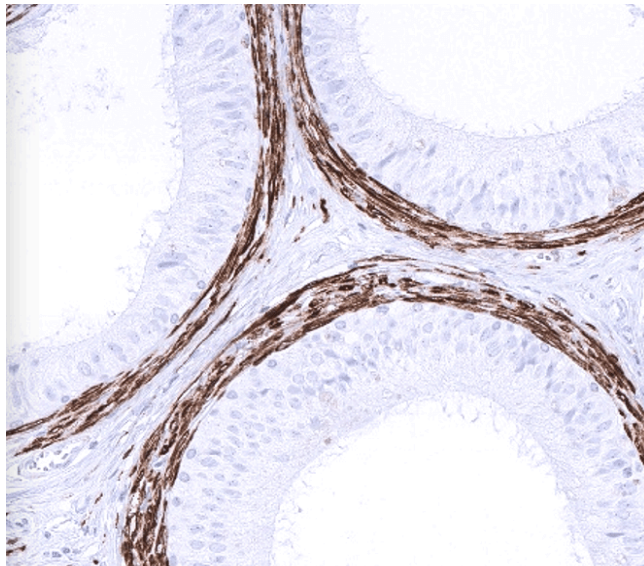
**Product data:**

**Immunohistochemistry (IHC):**

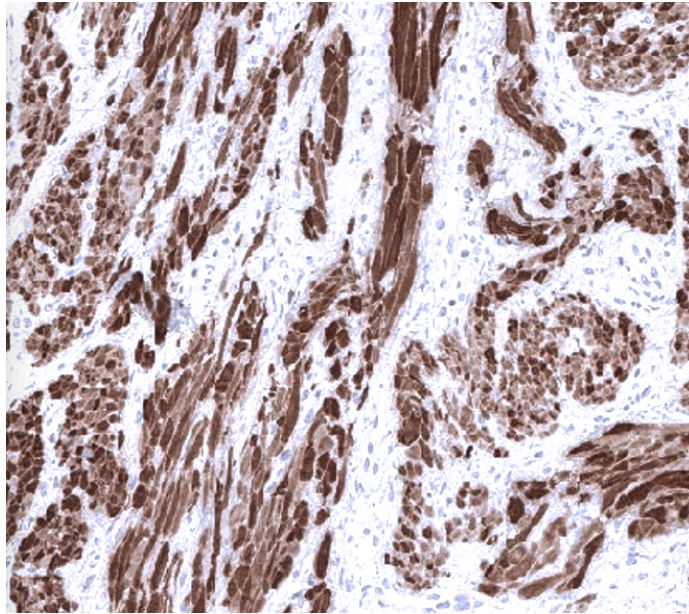
This product was successfully used to stain cytoskeleton in smooth muscle cells of aorta media, epididymis, and myometrium sections. Recommended concentration: 1-3ug/ml



Formaldehyde-fixed, paraffin-embedded human aorta media stained with Calponin 1 Rabbit Recombinant Antibody AE00347 at 1-2ug/ml for 60 minutes at 37°C. Epitope retrieval: Autoclave at 121°C, pH7.8 for 5 min followed by 20 min cooling. DAB staining by HRP polymer.



Formaldehyde-fixed, paraffin-embedded human epididymis stained with Calponin 1 Rabbit Recombinant Antibody AE00347 at 1-2ug/ml for 60 minutes at 37°C. Epitope retrieval: Autoclave at 121°C, pH7.8 for 5 min followed by 20 min cooling. DAB staining by HRP polymer.



Formaldehyde-fixed, paraffin-embedded human myometrium stained with Calponin 1 Rabbit Recombinant Antibody AE00347 at 1-2ug/ml for 60 minutes at 37°C. Epitope retrieval: Autoclave at 121°C, pH7.8 for 5 min followed by 20 min cooling. DAB staining by HRP polymer.

#### Tissue Microarray Validation:

##### Normal tissues

##### **Strong positive**

adrenal gland large vein  
 aorta, media  
 appendix muscular wall  
 bronchus mucosa  
 colon muscular wall  
 epididymis  
 fallopian tube  
 gallbladder  
 myometrium  
 seminal vesicle  
 urinary bladder muscular wall

##### **Weak to moderate**

breast myoepithelial cells  
 colon mucosa  
 duodenum mucosa  
 kidney medulla, arterioles  
 lung  
 pancreas arterioles  
 parotid gland  
 spleen trabecular smooth muscle  
 stomach  
 testis with abnormal  
 spermatogenesis  
 thyroid gland

##### **No staining at all**

adipose  
 appendix mucosa  
 bone marrow  
 cerebellum  
 cerebrum  
 duodenum Brunner gland  
 ectocervix  
 endocervix  
 endometrium  
 esophageal squamous epithelium  
 heart muscle  
 ileum  
 liver  
 lymph node  
 ovarian stroma  
 parathyroid  
 pituitary gland  
 pregnant uterus  
 placenta  
 rectum mucosa  
 renal cortex  
 skin (weak non-spec)  
 testis  
 thymus  
 tonsil  
 urothelium

**Cancer tissues**

**Strong positive**

prostate adenocarcinoma

gastric cancer

urothelial carcinoma

tumors derived from smooth muscle cells

**Weak to moderate**

**No staining at all**

epithelial tumor cells