



TMA-validated antibodies

## Cat nr AE00349

## Product Datasheet

Rabbit Recombinant Antibody, AE003R to:

### CD3e

CD\_antigen: CD3e; T-cell surface glycoprotein CD3 epsilon chain; T-cell surface antigen T3/Leu-4 epsilon chain; IMD18; T3E; TCRE

Cellular localization cell surface, plasma membrane

Official Symbol (Gene) CD3E  
GenelD 916  
SwissProt P07766

Confirmed Applications IHC  
Positive controls Spleen, lymph node, thymus, tonsil  
Aeonian Rating© 100

Purification By Protein A from bioreactor concentrate

Formulation  0.2 mg IgG/ml in PBS with 0.5% BSA & 0.05% azide.  
 0.2 mg IgG/ml in PBS with 0.05% azide, without BSA.  
Amount  200ug  1000ug  
Isotype Rabbit IgG

Confirmed species reactivity Human  
Immunogen Synthetic peptide corresponding to aa 23-40 of CD3e protein according to NP\_000724.1  
Epitope N-terminus of mature protein

Storage instructions Avoid repeated freeze/thaw cycles. For long term storage, keep small aliquots at -20C or -80C and keep one aliquot at 4C for daily experimentations. Azide will preserve antibody at 4C for 6-12 months, when kept away from direct sun light.

Expiration Integrity warranted for 24 months after purchase when handled and stored according to instructions, see below.

Warranty This product is only warranted for the specifications as described in this product sheet and only when the product is handled and stored according to instructions. User should validate this antibody in the application and tissue/cell type as required, after confirmation of integrity upon receipt is obtained by reproducing the performance as described below. Should such confirmation not be attempted, any warranty is void. In case of non-conformance, user needs to contact us immediately for replacement or refund.

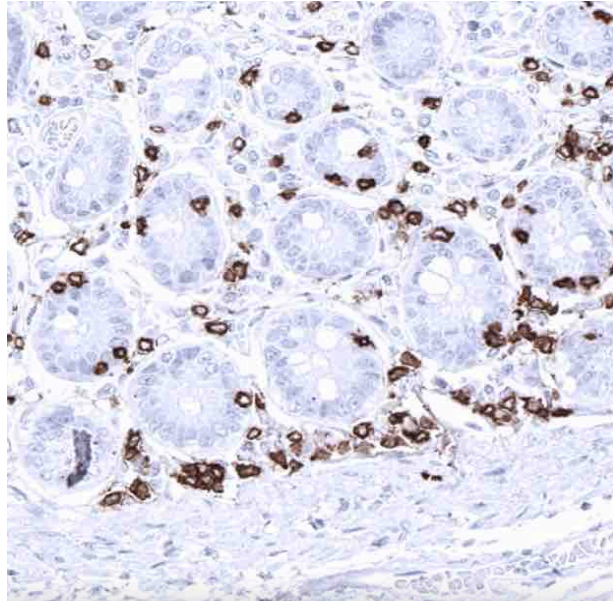
Liability This product is for in vitro research use only. Any other applications, such as diagnostics or therapeutics, or in vivo experiments, and the validation of this product therein, are solely at the responsibility of the buyer/user.

Product performance see next pages

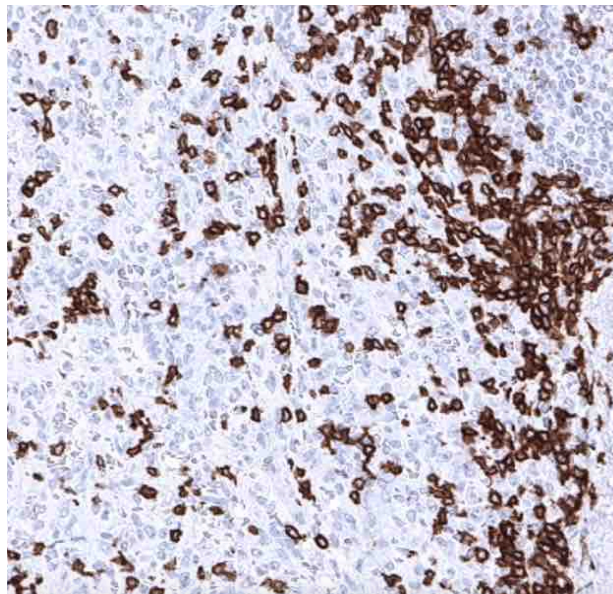
**Product data:**

**Immunohistochemistry (IHC):**

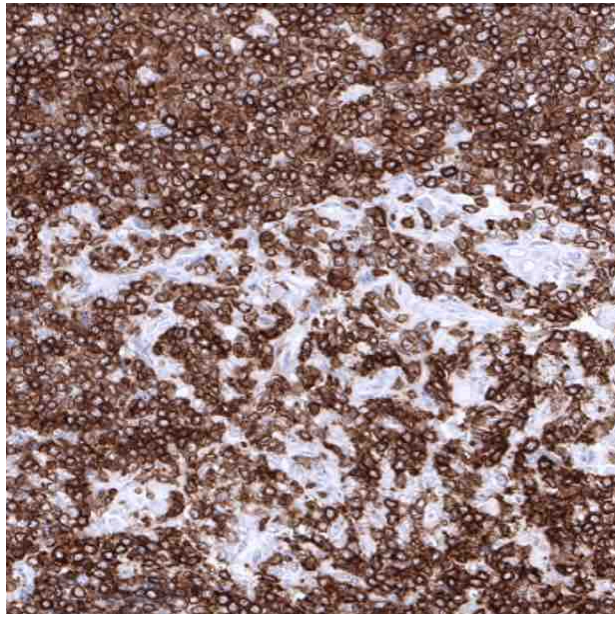
This product was successfully used to stain plasma membranes of T-cells in human duodenum, spleen and thymus sections. Recommended concentration: 1-3ug/ml



Formaldehyde-fixed, paraffin-embedded human duodenum stained with CD3e Rabbit Recombinant Antibody AE00349 at 1-2ug/ml for 60 minutes at 37°C. Epitope retrieval: Autoclave at 121°C, pH7.8 for 5 min followed by 20 min cooling. DAB staining by HRP polymer.



Formaldehyde-fixed, paraffin-embedded human spleen stained with CD3e Rabbit Recombinant Antibody AE00349 at 1-2ug/ml for 60 minutes at 37°C. Epitope retrieval: Autoclave at 121°C, pH7.8 for 5 min followed by 20 min cooling. DAB staining by HRP polymer.



Formaldehyde-fixed, paraffin-embedded human thymus stained with CD3e Rabbit Recombinant Antibody AE00349 at 1-2ug/ml for 60 minutes at 37°C. Epitope retrieval: Autoclave at 121°C, pH7.8 for 5 min followed by 20 min cooling. DAB staining by HRP polymer.

## Tissue Microarray Validation:

### Normal tissues

<b>Strong positive</b>	<b>Weak to moderate</b>	<b>No staining at all</b>
appendix mucosa	appendix muscular wall	adipose
duodenum mucosa	bone marrow	adrenal gland
gallbladder epithelium	bronchus mucosa	aorta, media
ileum	colon mucosa	breast
lymph node	duodenum Brunner gland	cerebellum
rectal mucosa	ectocervix	cerebrum
sinus paranasalis	endocervix	colon muscular wall
spleen	endometrium	epididymis
thymus	esophageal squamous epithelium	heart muscle
tonsil	fallopian tube	myometrium
	renal medulla	ovarian stroma
	liver	parathyroid gland
	lung	pituitary gland
	pancreas	placenta
	paratid gland	renal cortex
	prostate	skeletal muscle
	seminal vesicle	testis
	skin	thyroid gland
	stomach	urinary bladder muscular wall
	urothelium	

## Cancer tissues

<b>Strong positive</b>	<b>Weak to moderate</b>	<b>No staining at all</b>
Anaplastic Large Cell Lymphoma	breast invasive cancer, no special	renal oncocytoma
Angioimmunoblastic T-cell Lymphoma	type	
cervix adenocarcinoma	breast lobular cancer	
cervix squamous cell carcinoma	clear cell renal cell carcinoma	
esophagus adenocarcinoma	colorectal adenocarcinoma	
Hodgkin's lymphoma	oral cavity squamous cell carcinoma	
	ovary endometrioid carcinoma	