



TMA-validated antibodies

**Cat nr AE00350**

**Product Datasheet**

Rabbit Recombinant Antibody, AE004R to:

**CD4**

CD4 molecule; CD\_antigen: CD4; T-cell surface antigen T4/Leu-3; T-cell surface glycoprotein CD4; CD4mut; IMD79; OKT4D

Cellular localization cell surface, plasma membrane

Official Symbol (Gene) CD4  
GenelD 920  
SwissProt P01730

Confirmed Applications IHC  
Positive controls Spleen, lymph node, thymus, tonsil  
Aeonian Rating© 92

Purification By Protein A from bioreactor concentrate

Formulation  0.2 mg IgG/ml in PBS with 0.5% BSA & 0.05% azide.  
 0.2 mg IgG/ml in PBS with 0.05% azide, without BSA.  
Amount  200ug  1000ug  
Isotype Rabbit IgG, kappa

Confirmed species reactivity Human  
Immunogen Recombinant fragment around aa 216-396 of human CD4 protein

Epitope within region aa 216-396

Storage instructions Avoid repeated freeze/thaw cycles. For long term storage, keep small aliquots at -20C or -80C and keep one aliquot at 4C for daily experimentations. Azide will preserve antibody at 4C for 6-12 months, when kept away from direct sun light.

Expiration Integrity warranted for 24 months after purchase when handled and stored according to instructions, see below.

Warranty This product is only warranted for the specifications as described in this product sheet and only when the product is handled and stored according to instructions. User should validate this antibody in the application and tissue/cell type as required, after confirmation of integrity upon receipt is obtained by reproducing the performance as described below. Should such confirmation not be attempted, any warranty is void. In case of non-conformance, user needs to contact us immediately for replacement or refund.

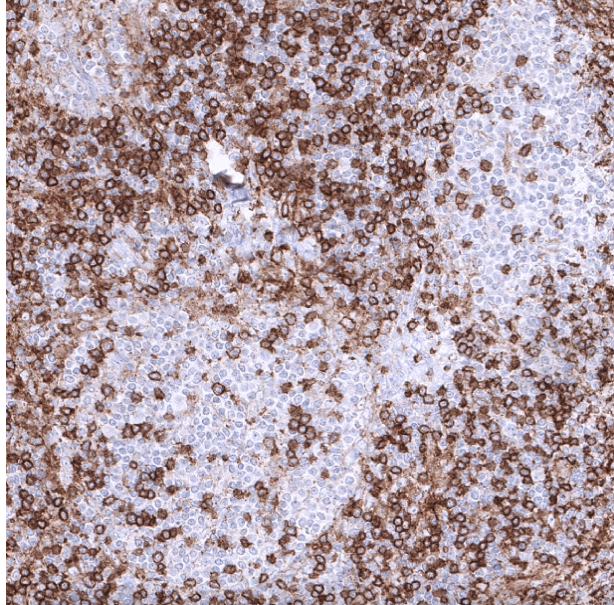
Liability This product is for in vitro research use only. Any other applications, such as diagnostics or therapeutics, or in vivo experiments, and the validation of this product therein, are solely at the responsibility of the buyer/user.

Product performance see next pages

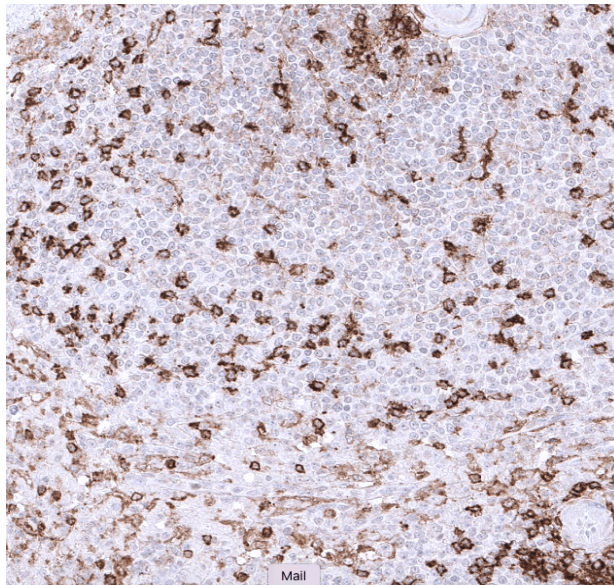
**Product data:**

**Immunohistochemistry (IHC):**

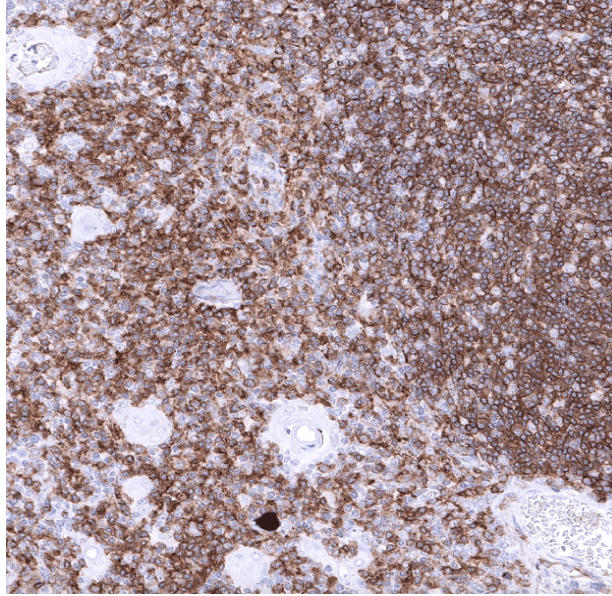
This product was successfully used to stain plasma membranes of T-cells in human thymus, spleen and lymph node sections. Recommended concentration: 1-3ug/ml



Formaldehyde-fixed, paraffin-embedded human lymph node stained with CD4 Rabbit Recombinant Antibody AE00350 at 1-2ug/ml for 60 minutes at 37°C. Epitope retrieval: Autoclave at 121°C, pH7.8 for 5 min followed by 20 min cooling. DAB staining by HRP polymer.



Formaldehyde-fixed, paraffin-embedded human spleen stained with CD4 Rabbit Recombinant Antibody AE00350 at 1-2ug/ml for 60 minutes at 37°C. Epitope retrieval: Autoclave at 121°C, pH7.8 for 5 min followed by 20 min cooling. DAB staining by HRP polymer.



Formaldehyde-fixed, paraffin-embedded human thymus stained with CD4 Rabbit Recombinant Antibody AE00350 at 1-2ug/ml for 60 minutes at 37°C. Epitope retrieval: Autoclave at 121°C, pH7.8 for 5 min followed by 20 min cooling. DAB staining by HRP polymer.

## Tissue Microarray Validation:

### Normal tissues

<b>Strong positive</b>	<b>Weak to moderate</b>	<b>No staining at all</b>
appendix mucosa	adrenal gland	adipose
ileum	colon mucosa	aorta, media
lymph node	duodenum mucosa	bone marrow
parathyroid	ectocervix	breast
spleen	endocervix	cerebellum
thymus	endometrium	colon muscular wall
tonsil	fallopian tube	duodenum Brunner gland
	gall bladder epithelium	epididymis
	liver	esophageal squamous epithelium
	lung	heart muscle
	parotid gland	kidney
	pituitary gland	myometrium
	pregnant uterus	ovarian stroma
	placenta, mature	pancreas
	rectum mucosa	placenta, early
	sinus paranasalis	prostate
	skin	seminal vesicle
	stomach	urinary bladder muscular wall
	testis	
	thyroid gland	
	urothelium	

## Cancer tissues

<b>Strong positive</b>	<b>Weak to moderate</b>	<b>No staining at all</b>
anaplastic large cell lymphoma	clear cell renal cell carcinoma	
chronic lymphocytic leukemia in lymph node	papillary renal cell carcinoma	
diffuse large B-cell lymphoma		
follicular B-cell lymphoma		
high grade T-cell lymphoma		
Hodgkin's lymphoma		
mantle cell lymphoma		