



TMA-validated antibodies

Cat nr AE00352

Product Datasheet

Rabbit Recombinant Antibody, AE007R to:

CD7

CD7 molecule; CD_antigen: CD7; T-cell leukemia antigen; T-cell surface antigen Leu-9; GP40; LEU-9; TP40; TP41

Cellular localization cell surface, plasma membrane

Official Symbol (Gene) CD7
GenelD 924
SwissProt P09564

Confirmed Applications IHC
Positive controls Duodenum, spleen, lymph node, thymus, tonsil
Aeonian Rating© 90

Purification By Protein A from bioreactor concentrate

Formulation 0.2 mg IgG/ml in PBS with 0.5% BSA & 0.05% azide.
 0.2 mg IgG/ml in PBS with 0.05% azide, without BSA.
Amount 200ug 1000ug
Isotype Rabbit IgG

Confirmed species reactivity Human
Immunogen Recombinant full-length human CD7 protein

Epitope unknown

Storage instructions Avoid repeated freeze/thaw cycles. For long term storage, keep small aliquots at -20C or -80C and keep one aliquot at 4C for daily experimentations. Azide will preserve antibody at 4C for 6-12 months, when kept away from direct sun light.

Expiration Integrity warranted for 24 months after purchase when handled and stored according to instructions, see below.

Warranty This product is only warranted for the specifications as described in this product sheet and only when the product is handled and stored according to instructions. User should validate this antibody in the application and tissue/cell type as required, after confirmation of integrity upon receipt is obtained by reproducing the performance as described below. Should such confirmation not be attempted, any warranty is void. In case of non-conformance, user needs to contact us immediately for replacement or refund.

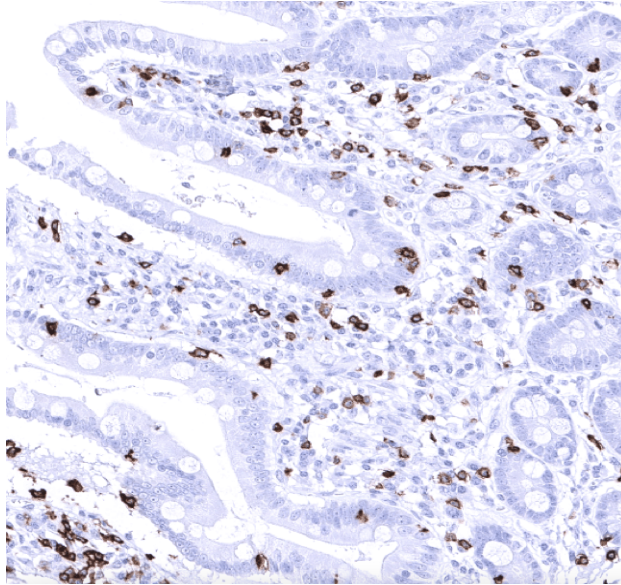
Liability This product is for in vitro research use only. Any other applications, such as diagnostics or therapeutics, or in vivo experiments, and the validation of this product therein, are solely at the responsibility of the buyer/user.

Product performance see next pages

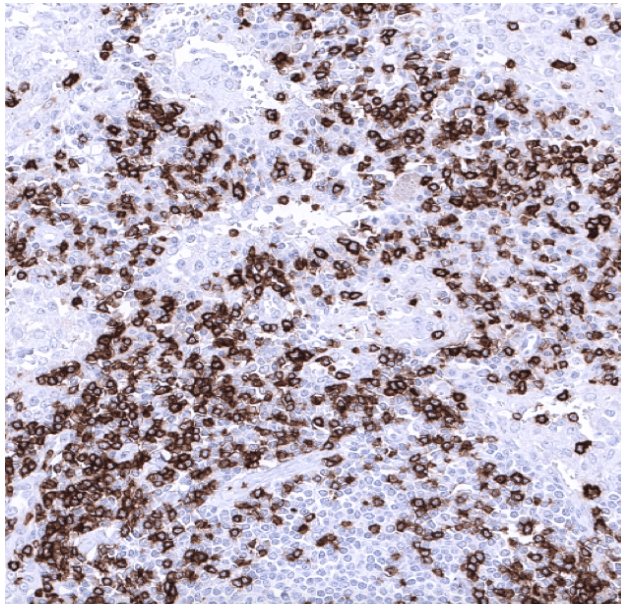
Product data:

Immunohistochemistry (IHC):

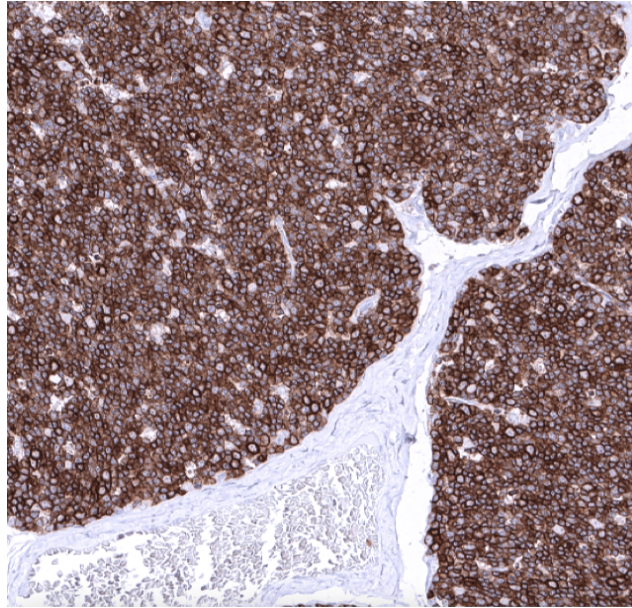
This product was successfully used to stain plasma membranes of T-cells in human duodenum, lymph node, and thymus sections. Recommended concentration: 1-3ug/ml



Formaldehyde-fixed, paraffin-embedded human duodenum stained with CD7 Rabbit Recombinant Antibody AE00352 at 1-2ug/ml for 60 minutes at 37°C. Epitope retrieval: Autoclave at 121°C, pH7.8 for 5 min followed by 20 min cooling. DAB staining by HRP polymer.



Formaldehyde-fixed, paraffin-embedded human lymph node stained with CD7 Rabbit Recombinant Antibody AE00352 at 1-2ug/ml for 60 minutes at 37°C. Epitope retrieval: Autoclave at 121°C, pH7.8 for 5 min followed by 20 min cooling. DAB staining by HRP polymer.



Formaldehyde-fixed, paraffin-embedded human thymus stained with CD7 Rabbit Recombinant Antibody AE00352 at 1-2ug/ml for 60 minutes at 37°C. Epitope retrieval: Autoclave at 121°C, pH7.8 for 5 min followed by 20 min cooling. DAB staining by HRP polymer.

Tissue Microarray Validation:

Normal tissues

Strong positive	Weak to moderate	No staining at all
endometrium, secretory	appendix mucosa	adipose
lymph node	appendix muscular wall, blood vessel	adrenal gland
placenta early, decidua	bone marrow	aorta, media
spleen	breast	cerebellum
thymus	bronchus mucosa	cerebrum
tonsil	colon mucosa	colon muscular wall
	duodenum Brunner gland	heart muscle
	duodenum mucosa	kidney
	ectocervix	ovarian stroma
	endocervix	parathyroid gland
	endometrium, proliferative	placenta mature
	epididymis	prostate
	esophageal squamous epithelium	skin
	fallopian tube	testis
	gallbladder	urinary bladder muscular wall
	ileum mucosa	
	liver	
	lung	
	pancreas	
	parotid gland	
	pituitary gland	
	placenta early	
	rectum mucosa	
	seminal vesicle	
	sinus paranasalis	

stomach
thyroid gland
urothelium

Cancer tissues

Strong positive	Weak to moderate	No staining at all
anaplastic large cell lymphoma	chronic lymphocytic leukemia in lymph node	adrenal cortical adenoma
follicular B-cell lymphoma	clear cell renal cell carcinoma	
seminoma	diffuse large B-cell lymphoma	
T-lymphoblastic lymphoma	gastric adenocarcinoma	
Warthin tumor	gastrointestinal stromal tumor	
	malignant melanoma	
	oral squamous cell carcinoma	
	ovarian endometrioid carcinoma	
	pancreas neuroendocrine tumor	
	papillary renal cell carcinoma	
	urothelial carcinoma	
