



Cat nr AE00353

Product Datasheet

Rabbit Recombinant Antibody, AE008R to:

CD8a

CD8a molecule; CD_antigen: CD8a; T-cell surface glycoprotein CD8 alpha chain; T-lymphocyte differentiation antigen T8/Leu-2; CD8; Leu2; MAL; p32

Cellular localization cell surface, plasma membrane

Official Symbol (Gene) CD8A
GenelD 925
SwissProt P01732

Confirmed Applications IHC
Positive controls Duodenum, spleen, lymph node, thymus, tonsil
Aeonian Rating© 90

Purification By Protein A from bioreactor concentrate

Formulation ☐ 0.2 mg IgG/ml in PBS with 0.5% BSA & 0.05% azide.
☐ 0.2 mg IgG/ml in PBS with 0.05% azide, without BSA.
Amount ☐ 200ug ☐ 1000ug
Isotype Rabbit IgG

Confirmed species reactivity Human
Immunogen Synthetic peptide corresponding to a region within aa 135-235 of human CD8a protein
Epitope unknown

Storage instructions Avoid repeated freeze/thaw cycles. For long term storage, keep small aliquots at -20C or -80C and keep one aliquot at 4C for daily experimentations. Azide will preserve antibody at 4C for 6-12 months, when kept away from direct sun light.

Expiration Integrity warranted for 24 months after purchase when handled and stored according to instructions, see below.

Warranty This product is only warranted for the specifications as described in this product sheet and only when the product is handled and stored according to instructions. User should validate this antibody in the application and tissue/cell type as required, after confirmation of integrity upon receipt is obtained by reproducing the performance as described below. Should such confirmation not be attempted, any warranty is void. In case of non-conformance, user needs to contact us immediately for replacement or refund.

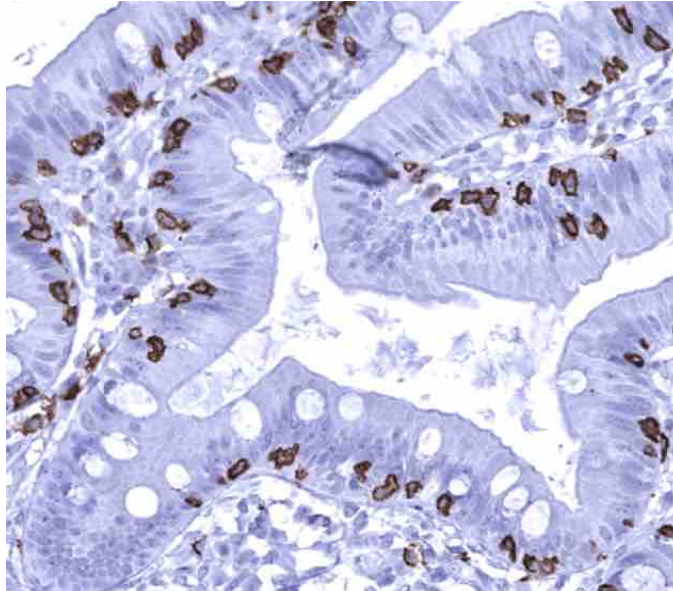
Liability This product is for in vitro research use only. Any other applications, such as diagnostics or therapeutics, or in vivo experiments, and the validation of this product therein, are solely at the responsibility of the buyer/user.

Product performance see next pages

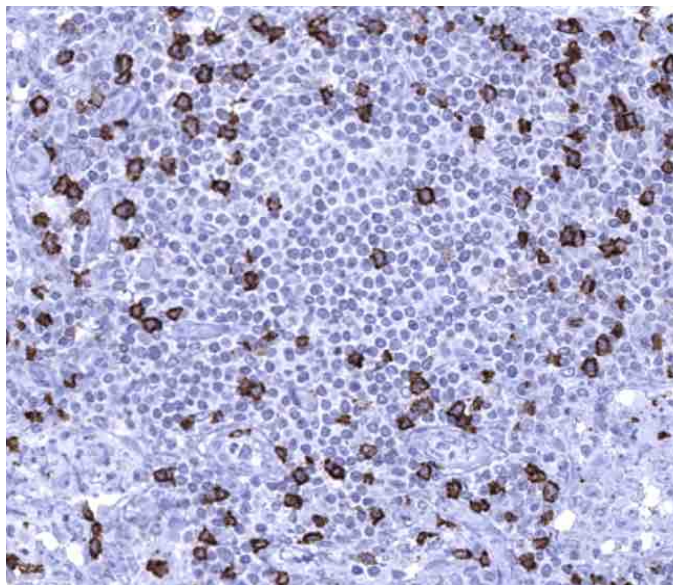
Product data:

Immunohistochemistry (IHC):

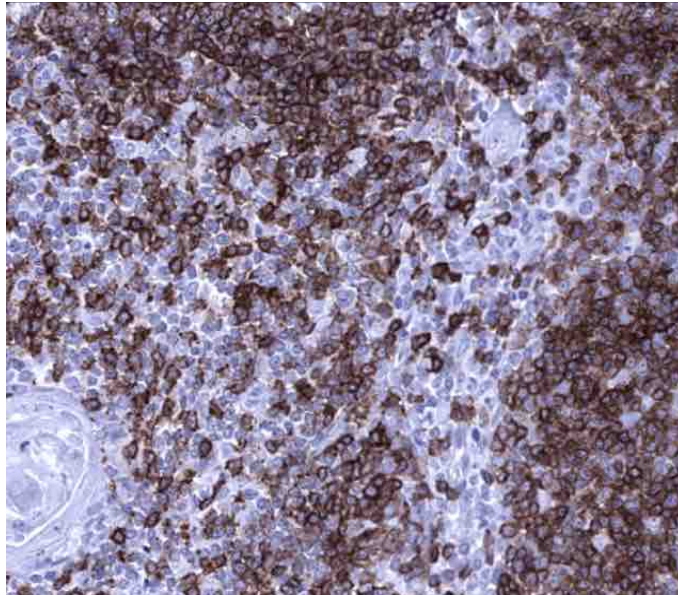
This product was successfully used to stain plasma membranes of T-cells in human duodenum, lymph node, and thymus sections. Recommended concentration: 1-3ug/ml



Formaldehyde-fixed, paraffin-embedded human duodenum stained with CD8a Rabbit Recombinant Antibody AE00353 at 1-2ug/ml for 60 minutes at 37°C. Epitope retrieval: Autoclave at 121°C, pH7.8 for 5 min followed by 20 min cooling. DAB staining by HRP polymer.



Formaldehyde-fixed, paraffin-embedded human lymph node stained with CD8a Rabbit Recombinant Antibody AE00353 at 1-2ug/ml for 60 minutes at 37°C. Epitope retrieval: Autoclave at 121°C, pH7.8 for 5 min followed by 20 min cooling. DAB staining by HRP polymer.



Formaldehyde-fixed, paraffin-embedded human thymus stained with CD8a Rabbit Recombinant Antibody AE00353 at 1-2ug/ml for 60 minutes at 37°C. Epitope retrieval: Autoclave at 121°C, pH7.8 for 5 min followed by 20 min cooling. DAB staining by HRP polymer.

Tissue Microarray Validation:

Normal tissues

Strong positive	Weak to moderate	No staining at all
lymph node	adrenal gland	adipose
spleen	appendix mucosa	aorta, media
thymus	bronchus mucosa	appendix muscular wall
tonsil	colon mucosa	bone marrow
	colon muscular wall	breast
	duodenum mucosa	cerebellum
	ectocervix	cerebrum
	endocervix	duodenum Brunner gland
	endometrium, proliferatory	endometrium, pregnancy
	epididymis	endometrium, secretory
	esophageal squamous epithelium	heart muscle
	fallopian tube	kidney
	gallbladder	myometrium
	ileum mucosa	ovarian stroma
	liver	parathyroid gland
	lung	pituitary gland
	pancreas	placenta
	parotid gland	prostate
	rectum mucosa	skeletal muscle
	seminal vesicle	skin
	sinus paranasalis	testis
	stomach	thyroid gland
	urothelium	urinary bladder muscular wall

Cancer tissues

Strong positive	Weak to moderate	No staining at all
angioimmunoblastic T-cell lymphoma	esophagus adenocarcinoma	papillary renal cell carcinoma
follicular B-cell lymphoma	clear cell renal cell carcinoma	
Hodgkin's lymphoma	chronic lymphocytic leukemia in lymph node	
cervix squamous cell carcinoma	high grade serous carcinoma	
vagina squamous cell carcinoma	prostate adenocarcinoma	
	thyroid follicular carcinoma	
	uruthelial carcinoma	