



TMA-validated antibodies

Cat nr AE00354

Product Datasheet

Rabbit Recombinant Antibody, AE022R to:

CD22

B-cell receptor CD22; B-lymphocyte cell adhesion molecule; CD_antigen: CD22; Sialic acid-binding Ig-like lectin 2; T-cell surface antigen Leu-14; BL-CAM; SIGLEC-2; SIGLEC2

Cellular localization cell surface, plasma membrane

Official Symbol (Gene) CD22
GenelD 933
SwissProt P20273

Confirmed Applications IHC
Positive controls Lymph node, spleen, tonsil
Aeonian Rating© 92

Purification By Protein A from bioreactor concentrate

Formulation 0.2 mg IgG/ml in PBS with 0.5% BSA & 0.05% azide.
 0.2 mg IgG/ml in PBS with 0.05% azide, without BSA.
Amount 200ug 1000ug
Isotype Rabbit IgG

Confirmed species reactivity Human
Immunogen Recombinant fragment corresponding to aa 52-178 of human CD22 protein
Epitope Extracellular domain between aa 52-178

Storage instructions Avoid repeated freeze/thaw cycles. For long term storage, keep small aliquots at -20C or -80C and keep one aliquot at 4C for daily experimentations. Azide will preserve antibody at 4C for 6-12 months, when kept away from direct sun light.

Expiration Integrity warranted for 24 months after purchase when handled and stored according to instructions, see below.

Warranty This product is only warranted for the specifications as described in this product sheet and only when the product is handled and stored according to instructions. User should validate this antibody in the application and tissue/cell type as required, after confirmation of integrity upon receipt is obtained by reproducing the performance as described below. Should such confirmation not be attempted, any warranty is void. In case of non-conformance, user needs to contact us immediately for replacement or refund.

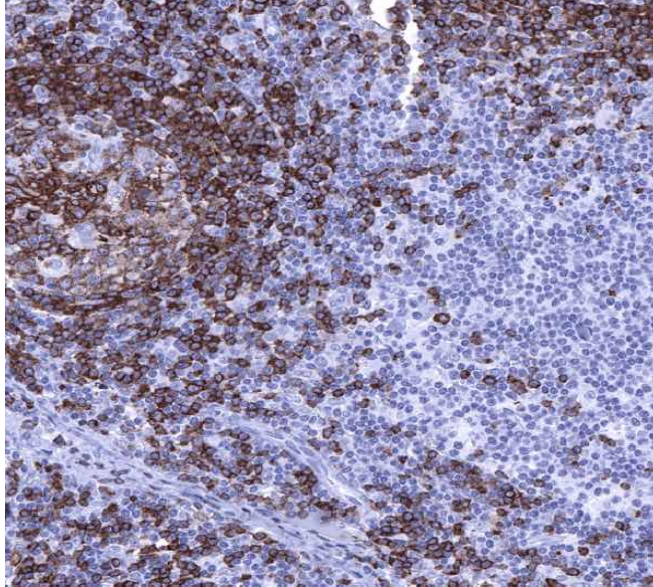
Liability This product is for in vitro research use only. Any other applications, such as diagnostics or therapeutics, or in vivo experiments, and the validation of this product therein, are solely at the responsibility of the buyer/user.

Product performance see next pages

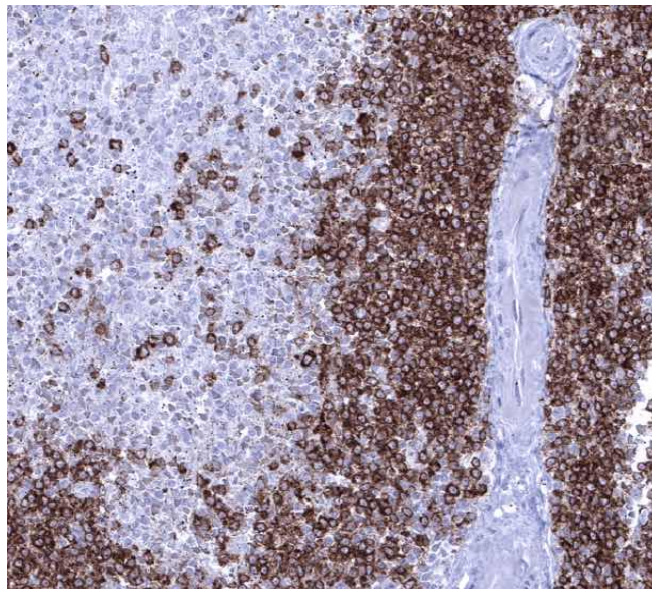
Product data:

Immunohistochemistry (IHC):

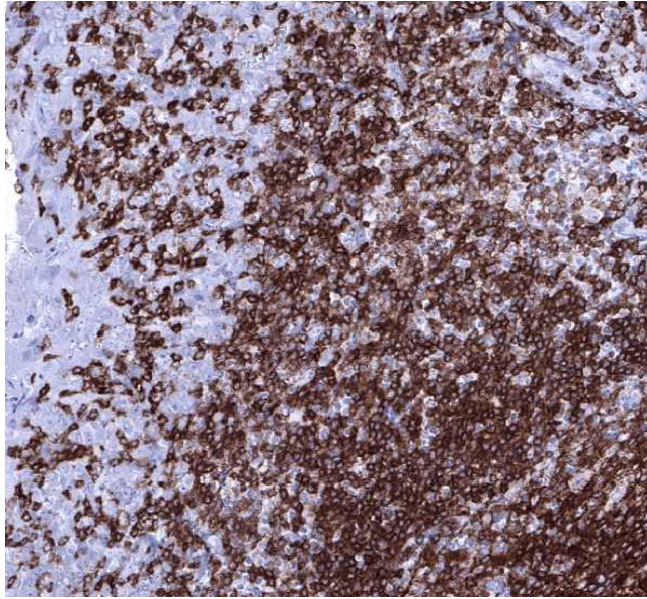
This product was successfully used to stain plasma membranes of B-cells in human lymph node, spleen, and tonsil sections. Recommended concentration: 1-3ug/ml



Formaldehyde-fixed, paraffin-embedded human lymph node stained with CD22 Rabbit Recombinant Antibody AE00354 at 1-2ug/ml for 60 minutes at 37°C. Epitope retrieval: Autoclave at 121°C, pH7.8 for 5 min followed by 20 min cooling. DAB staining by HRP polymer.



Formaldehyde-fixed, paraffin-embedded human spleen stained with CD22 Rabbit Recombinant Antibody AE00354 at 1-2ug/ml for 60 minutes at 37°C. Epitope retrieval: Autoclave at 121°C, pH7.8 for 5 min followed by 20 min cooling. DAB staining by HRP polymer.



Formaldehyde-fixed, paraffin-embedded human tonsil stained with CD22 Rabbit Recombinant Antibody AE00354 at 1-2ug/ml for 60 minutes at 37°C. Epitope retrieval: Autoclave at 121°C, pH7.8 for 5 min followed by 20 min cooling. DAB staining by HRP polymer.

Tissue Microarray Validation:

Normal tissues

| Strong positive | Weak to moderate | No staining at all |
|------------------------|-------------------|--------------------------------|
| appendix near lymph fc | gallbladder | adipose |
| lymph node | ileum mucosa | adrenal gland |
| spleen | sinus paranasalis | aorta, media |
| tonsil | thymus | appendix mucosa |
| | | appendix muscular wall |
| | | bone marrow |
| | | bronchus glands |
| | | bronchus mucosa |
| | | cerebellum |
| | | cerebrum |
| | | colon mucosa |
| | | colon muscular wall |
| | | duodenum Brunner gland |
| | | duodenum mucosa |
| | | ectocervix |
| | | endocervix |
| | | endometrium |
| | | epididymis |
| | | esophageal squamous epithelium |
| | | fallopian tube |
| | | heart muscle |
| | | kidney |
| | | liver |
| | | lung |

myometrium
 ovarian stroma
 pancreas
 parathyroid gland
 parotid gland
 pituitary gland
 placenta
 prostate
 rectum mucosa
 seminal vesicle
 skeletal muscle
 skin
 stomach
 testis
 thyroid gland
 urinary bladder muscular wall
 urothelium

Cancer tissues

| Strong positive | Weak to moderate | No staining at all |
|--|--------------------------------|---------------------------------|
| chronic lymphocytic leukemia in lymphoma | Burkitt's lymphoma | Pheochromocytoma |
| diffuse large B-cell lymphoma | Hodgkin's lymphoma | colorectal adenocarcinoma |
| follicular B-cell lymphoma | marginal zone lymphoma | clear cell renal cell carcinoma |
| mantle cell lymphoma | high grade serous carcinoma | hepatocellular carcinoma |
| Warthin tumor | seminoma | gastric adenocarcinoma |
| | vagina squamous cell carcinoma | gastrointestinal stromal tumor |
| | | thyroid medullary carcinoma |
| | | urinary small cell carcinoma |
