



TMA-validated antibodies

Cat nr AE00356

Product Datasheet

Rabbit Recombinant Antibody, AE045R to:

CD45

CD_antigen: CD45; Leukocyte common antigen; protein tyrosine phosphatase receptor type C; Receptor-type tyrosine-protein phosphatase C; B220; CD45; L-CA; T200; CD45R; GP180; LCA; LY5; PTPRC; T200

Cellular localization cell surface, plasma membrane

Official Symbol (Gene) PTPRC
GenelD 5788
SwissProt P08575

Confirmed Applications IHC
Positive controls intestinal mucosa, lymph node, thymus, tonsil
Aeonian Rating© 90

Purification By Protein A from bioreactor concentrate

Formulation 0.2 mg IgG/ml in PBS with 0.5% BSA & 0.05% azide.
 0.2 mg IgG/ml in PBS with 0.05% azide, without BSA.
Amount 200ug 1000ug
Isotype Rabbit IgG

Confirmed species reactivity Human
Immunogen Recombinant full-length human CD45 protein

Epitope Unknown

Storage instructions Avoid repeated freeze/thaw cycles. For long term storage, keep small aliquots at -20C or -80C and keep one aliquot at 4C for daily experimentations. Azide will preserve antibody at 4C for 6-12 months, when kept away from direct sun light.

Expiration Integrity warranted for 24 months after purchase when handled and stored according to instructions, see below.

Warranty This product is only warranted for the specifications as described in this product sheet and only when the product is handled and stored according to instructions. User should validate this antibody in the application and tissue/cell type as required, after confirmation of integrity upon receipt is obtained by reproducing the performance as described below. Should such confirmation not be attempted, any warranty is void. In case of non-conformance, user needs to contact us immediately for replacement or refund.

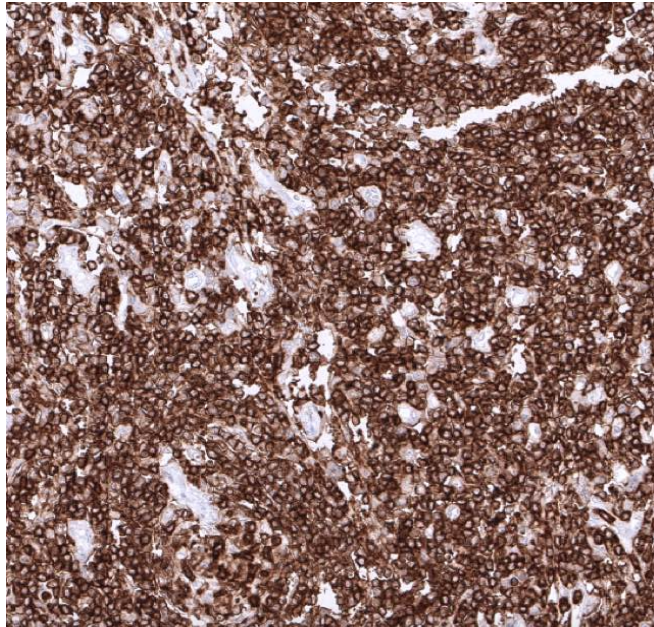
Liability This product is for in vitro research use only. Any other applications, such as diagnostics or therapeutics, or in vivo experiments, and the validation of this product therein, are solely at the responsibility of the buyer/user.

Product performance see next pages

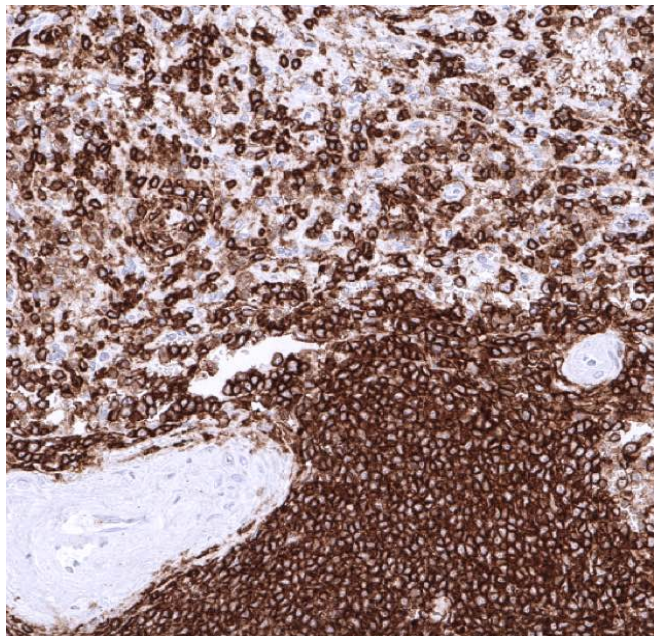
Product data:

Immunohistochemistry (IHC):

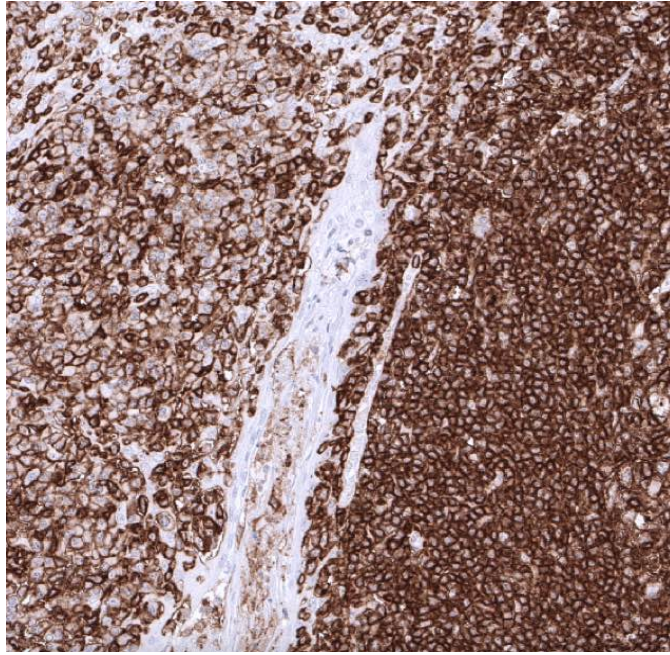
This product was successfully used to stain lymphocyte plasma membranes in human lymph node, spleen and tonsil sections. Recommended concentration: 1-3ug/ml



Formaldehyde-fixed, paraffin-embedded human lymph node stained with CD45 Rabbit Recombinant Antibody AE00356 at 1-2ug/ml for 60 minutes at 37°C. Epitope retrieval: Autoclave at 121°C, pH7.8 for 5 min followed by 20 min cooling. DAB staining by HRP polymer.



Formaldehyde-fixed, paraffin-embedded human spleen stained with CD45 Rabbit Recombinant Antibody AE00356 at 1-2ug/ml for 60 minutes at 37°C. Epitope retrieval: Autoclave at 121°C, pH7.8 for 5 min followed by 20 min cooling. DAB staining by HRP polymer.



Formaldehyde-fixed, paraffin-embedded human tonsil stained with CD45 Rabbit Recombinant Antibody AE00356 at 1-2ug/ml for 60 minutes at 37°C. Epitope retrieval: Autoclave at 121°C, pH7.8 for 5 min followed by 20 min cooling. DAB staining by HRP polymer.

Tissue Microarray Validation:

Normal tissues

Strong positive

appendix mucosa
 duodenum mucosa
 ileum mucosa
 liver
 lymph node
 rectum mucosa
 spleen
 thymus
 tonsil

Weak to moderate

adrenal gland
 appendix muscular wall
 bone marrow
 bronchus mucosa
 cerebrum
 duodenum Brunner gland
 endocervix
 endometrium
 esophageal squamous epithelium
 fallopian tube
 gallbladder
 kidney
 lung
 myometrium
 pancreas
 parotid gland
 pituitary gland, posterior lobe
 prostate
 sinus paranasalis
 skeletal muscle
 skin
 stomach
 urinary bladder muscular wall
 urothelium

No staining at all

adipose
 aorta, media
 cerebellum
 colon muscular wall
 heart muscle
 ovarian stroma
 parathyroid gland
 placenta
 seminal vesicle
 testis
 thyroid gland

Cancer tissues

Strong positive	Weak to moderate	No staining at all
ALK+ anaplastic large cell lymphoma	colorectal adenocarcinoma	anaplastic large cell lymphoma
angioimmunoblastic T-cell lymphoma	diffuse large B-cell lymphoma	clear cell ovarian carcinoma
chronic lymphocytic leukemia in lymph node	high-grade serous carcinoma	
follicular lymphoma	vaginal squamous cell carcinoma	
T-lymphoblastic lymphoma		
mantle cell lymphoma		
marginal zone lymphoma		
oropharyngeal squamous cell carcinoma		