



TMA-validated antibodies

**Cat nr AE00358**

**Product Datasheet**

Mouse Recombinant Antibody, AE410M to:

**CELA3B**

chymotrypsin like elastase 3B; Chymotrypsin-like elastase family member 3B; Elastase IIIB; Elastase-3B; Protease E; CBPP; ELA3B

Cellular localization                      secreted

Official Symbol (Gene)                      CELA3B

GenelD    23436

SwissProt    P08861

Confirmed Applications                      IHC  
Positive controls                              pancreas, acinar cell carcinoma

Aeonian Rating©                              91

Purification                                      By Protein A from bioreactor concentrate

Formulation                                       0.2 mg IgG/ml in PBS with 0.5% BSA & 0.05% azide.  
 0.2 mg IgG/ml in PBS with 0.05% azide, without BSA.

Amount     200ug                                       1000ug

Isotype    Mouse IgG1, kappa

Confirmed species reactivity                      Human

Immunogen                                      Recombinant fragment within the aa 82-238 region of human CELA3B protein

Epitope    Within the aa 82-238 region

Storage instructions                              Avoid repeated freeze/thaw cycles. For long term storage, keep small aliquots at -20C or -80C and keep one aliquot at 4C for daily experimentations. Azide will preserve antibody at 4C for 6-12 months, when kept away from direct sun light.

Expiration    Integrity warranted for 24 months after purchase when handled and stored according to instructions, see below.

Warranty    This product is only warranted for the specifications as described in this product sheet and only when the product is handled and stored according to instructions. User should validate this antibody in the application and tissue/cell type as required, after confirmation of integrity upon receipt is obtained by reproducing the performance as described below. Should such confirmation not be attempted, any warranty is void. In case of non-conformance, user needs to contact us immediately for replacement or refund.

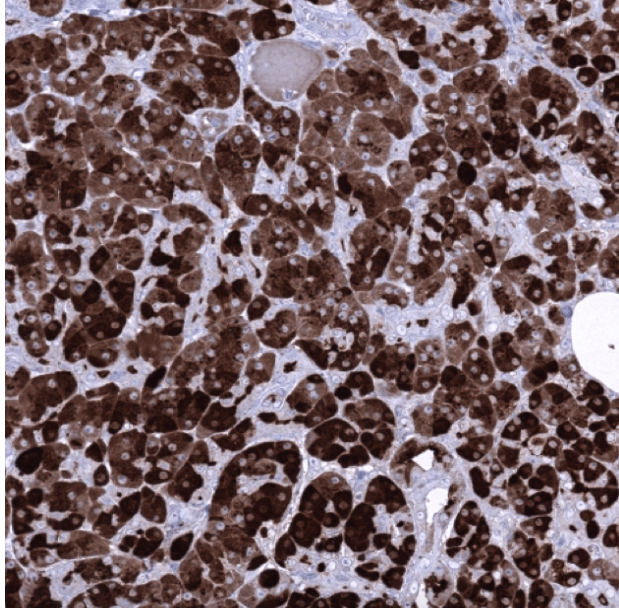
Liability    This product is for in vitro research use only. Any other applications, such as diagnostics or therapeutics, or in vivo experiments, and the validation of this product therein, are solely at the responsibility of the buyer/user.

Product performance                              see next pages

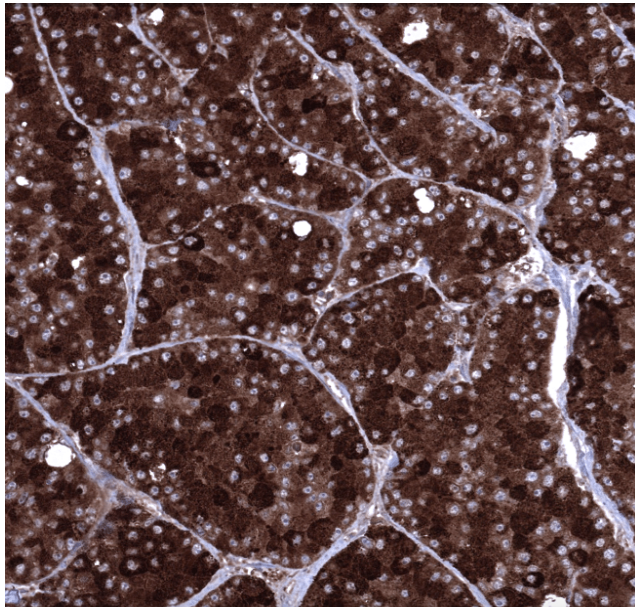
**Product data:**

**Immunohistochemistry (IHC):**

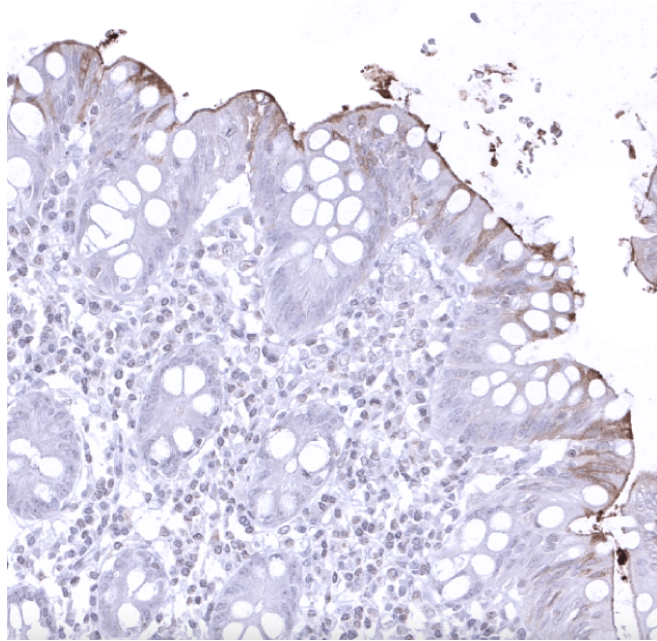
This product was successfully used to stain acinar cells in human pancreas, acinar cell carcinoma, and at the luminal epithelium surface in appendix sections. Recommended concentration: 1-3ug/ml



Formaldehyde-fixed, paraffin-embedded human pancreas stained with CELA3B Mouse Recombinant Antibody AE00358 at 1-2ug/ml for 60 minutes at 37°C. Epitope retrieval: Autoclave at 121°C, pH7.8 for 5 min followed by 20 min cooling. DAB staining by HRP polymer.



Formaldehyde-fixed, paraffin-embedded human acinar carcinoma stained with CELA3B Mouse Recombinant Antibody AE00358 at 1-2ug/ml for 60 minutes at 37°C. Epitope retrieval: Autoclave at 121°C, pH7.8 for 5 min followed by 20 min cooling. DAB staining by HRP polymer.



Formaldehyde-fixed, paraffin-embedded human appendix stained with CELA3B Mouse Recombinant Antibody AE00358 at 1-2ug/ml for 60 minutes at 37°C. Epitope retrieval: Autoclave at 121°C, pH7.8 for 5 min followed by 20 min cooling. DAB staining by HRP polymer.

#### Tissue Microarray Validation:

##### Normal tissues

##### **Strong positive**

pancreas

##### **Weak to moderate**

appendix mucosa

ileum mucosa

tonsil surface epithelium

##### **No staining at all**

adipose

adrenal gland

aorta, media

appendix muscular wall

bone marrow

breast

bronchus glands

bronchus mucosa

cerebellum

cerebrum

colon mucosa

colon muscular wall

duodenum Brunner gland

duodenum mucosa

ectocervix

endocervix

endometrium

epididymis

esophagus squamous epithelium

fallopian tube

gallbladder

heart muscle

kidney

liver  
 lung  
 lymph node  
 myometrium  
 ovarian stroma  
 parathyroid gland  
 parotid gland  
 pituitary gland  
 placenta  
 pregnant uterus  
 prostate  
 rectum mucosa  
 seminal vesicle  
 sinus paranasalis  
 skeletal muscle  
 skin  
 spleen  
 stomach  
 testis  
 thymus  
 thyroid gland  
 urinary bladder muscular wall  
 urothelium

---

## Cancer tissues

### Strong positive

acinar cell carcinoma

### Weak to moderate

### No staining at all

breast cancer no special type  
 cholangiocarcinoma  
 clear cell renal cell carcinoma  
 colorectal adenocarcinoma  
 endometrial cancer  
 esophagus adenocarcinoma  
 gastric adenocarcinoma  
 gastrointestinal stromal tumor  
 high-grade serous carcinoma  
 larynx squamous cell carcinoma  
 liposarcoma  
 lung adenocarcinoma  
 medullary thyroid cancer  
 pancreas ductal adenocarcinoma  
 pancreas neuroendocrine tumor  
 papillary thyroid cancer  
 pheochromocytoma  
 prostate adenocarcinoma  
 urothelial carcinoma  
 vulva squamous cell carcinoma

---