



Cat nr AE00361

Product Datasheet

Mouse Recombinant Antibody, AE605M to:

KRT5

cytokeratin 5; cytokeratin-5; keratin 5; Keratin-5; Keratin, type II cytoskeletal 5; Type-II keratin Kb5; K5; CK5; DDD; DDD1; EBS1; EBS2; EBS2A; EBS2B; EBS2C; EBS2D; EBS2E; EBS2F; KRT5; KRT5A

Cellular localization cytoskeleton

Official Symbol (Gene) KRT5
GenelD 3852
SwissProt P13647

Confirmed Applications	IHC
Positive controls	epididymis, skin and urothelium
Aeonian Rating©	91

Purification By Protein A from bioreactor concentrate

Formulation 0.2 mg IgG/ml in PBS with 0.5% BSA & 0.05% azide.
 0.2 mg IgG/ml in PBS with 0.05% azide, without BSA.

Amount 200ug 1000ug

Isotype Mouse IgG2a, kappa

Confirmed species reactivity Human
Immunogen Recombinant fragment within the aa 316-590 region of human KRT5 protein
Epitope epid

Storage instructions Avoid repeated freeze/thaw cycles. For long term storage, keep small aliquots at -20C or -80C and keep one aliquot at 4C for daily experimentations. Azide will preserve antibody at 4C for 6-12 months, when kept away from direct sun light.

Expiration Integrity warranted for 24 months after purchase when handled and stored according to instructions, see below.

Warranty This product is only warranted for the specifications as described in this product sheet and only when the product is handled and stored according to instructions. User should validate this antibody in the application and tissue/cell type as required, after confirmation of integrity upon receipt is obtained by reproducing the performance as described below. Should such confirmation not be attempted, any warranty is void. In case of non-conformance, user needs to contact us immediately for replacement or refund.

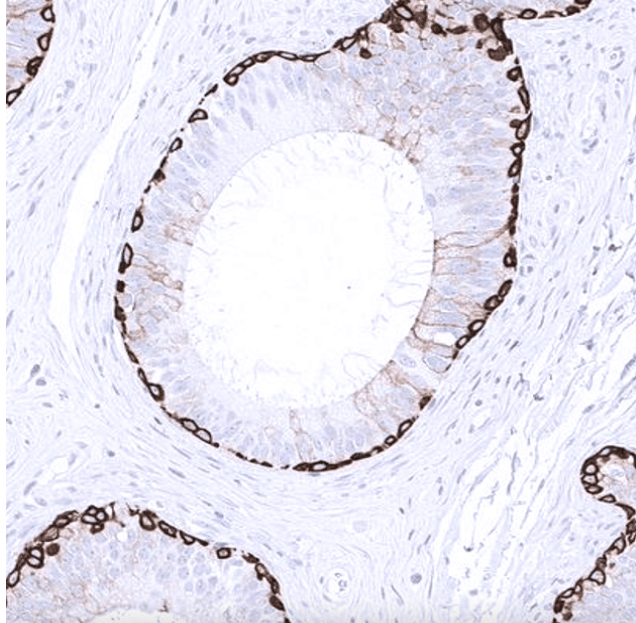
Liability This product is for in vitro research use only. Any other applications, such as diagnostics or therapeutics, or in vivo experiments, and the validation of this product therein, are solely at the responsibility of the buyer/user.

Product performance see next pages

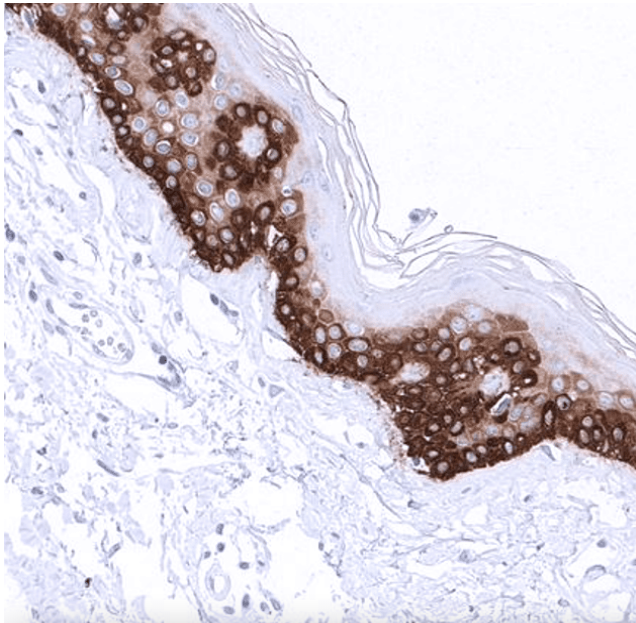
Product data:

Immunohistochemistry (IHC):

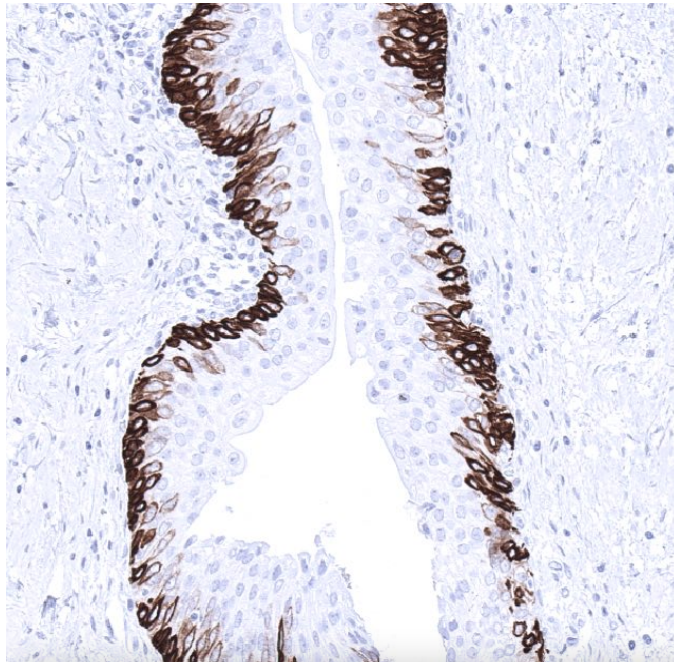
This product was successfully used to stain basal cells in human epididymis, skin and urothelium sections.
Recommended concentration: 1-3ug/ml



Formaldehyde-fixed, paraffin-embedded human epididymis stained with KRT5 Rabbit Recombinant Antibody AE00361 at 1-2ug/ml for 60 minutes at 37°C. Epitope retrieval: Autoclave at 121°C, pH7.8 for 5 min followed by 20 min cooling. DAB staining by HRP polymer.



Formaldehyde-fixed, paraffin-embedded human skin stained with KRT5 Rabbit Recombinant Antibody AE00361 at 1-2ug/ml for 60 minutes at 37°C. Epitope retrieval: Autoclave at 121°C, pH7.8 for 5 min followed by 20 min cooling. DAB staining by HRP polymer.



Formaldehyde-fixed, paraffin-embedded human urothelium stained with KRT5 Rabbit Recombinant Antibody AE00361 at 1-2ug/ml for 60 minutes at 37°C. Epitope retrieval: Autoclave at 121°C, pH7.8 for 5 min followed by 20 min cooling. DAB staining by HRP polymer.

Tissue Microarray Validation:

Normal tissues

Strong positive

bronchus mucosa
 ectocervix
 epididymis
 esophagus squamous epithelium
 prostate
 sinus paranasalis
 skin
 tonsil
 urothelium

Weak to moderate

endocervical glands
 parotid gland
 thymus

No staining at all

adipose
 adrenal gland
 aorta, media
 appendix mucosa
 appendix muscular wall
 bone marrow
 breast
 cerebellum
 cerebrum
 colon mucosa
 duodenum Brunner gland
 duodenum mucosa
 endometrium
 gallbladder
 heart muscle
 ileum mucosa
 kidney
 liver
 lung
 ovarian stroma
 pancreas
 parathyroid gland
 pituitary gland

placenta
pregnant uterus
rectum mucosa
seminal vesicle
spleen
stomach
testis
thyroid gland
urinary bladder muscular wall

Strong positive

breast cancer no special type
cervical squamous cell carcinoma
esophagus squamous cell carcinoma
lung squamous cell carcinoma
pancreas adenocarcinoma
thymoma
urothelial carcinoma

Weak to moderate

cholangiocarcinoma
lobular breast cancer
malignant mesothelioma

No staining at all
