



TMA-validated antibodies

**Cat nr AE00363**

**Product Datasheet**

Rabbit Recombinant Antibody, AE670R to:

**KRT20**

cytokeratin 20; cytokeratin-20; keratin 20; keratin-20; keratin, type I cytoskeletal 20; CK20; CK-20; K20; KRT20

Cellular localization                      cytoskeleton, cytoplasm

Official Symbol (Gene)                      KRT20  
GenelD    54474  
SwissProt    P35900

Confirmed Applications                      IHC  
Positive controls                                appendix, ileum, colon

Aeonian Rating©                                92

Purification                                      By Protein A from bioreactor concentrate

Formulation                                       0.2 mg IgG/ml in PBS with 0.5% BSA & 0.05% azide.  
 0.2 mg IgG/ml in PBS with 0.05% azide, without BSA.

Amount     200ug                                       1000ug  
Isotype    Rabbit IgG

Confirmed species reactivity                Human  
Immunogen                                        Recombinant fragment within the aa 196-323 region of human KRT20 protein  
Epitope    within aa 196-323 region

Storage instructions                            Avoid repeated freeze/thaw cycles. For long term storage, keep small aliquots at -20C or -80C and keep one aliquot at 4C for daily experimentations. Azide will preserve antibody at 4C for 6-12 months, when kept away from direct sun light.

Expiration                                         Integrity warranted for 24 months after purchase when handled and stored according to instructions, see below.

Warranty    This product is only warranted for the specifications as described in this product sheet and only when the product is handled and stored according to instructions. User should validate this antibody in the application and tissue/cell type as required, after confirmation of integrity upon receipt is obtained by reproducing the performance as described below. Should such confirmation not be attempted, any warranty is void. In case of non-conformance, user needs to contact us immediately for replacement or refund.

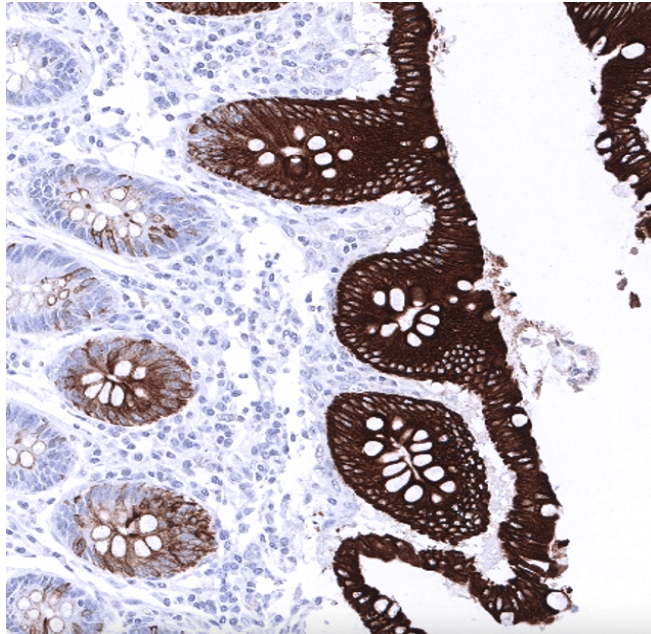
Liability    This product is for in vitro research use only. Any other applications, such as diagnostics or therapeutics, or in vivo experiments, and the validation of this product therein, are solely at the responsibility of the buyer/user.

Product performance                            see next pages

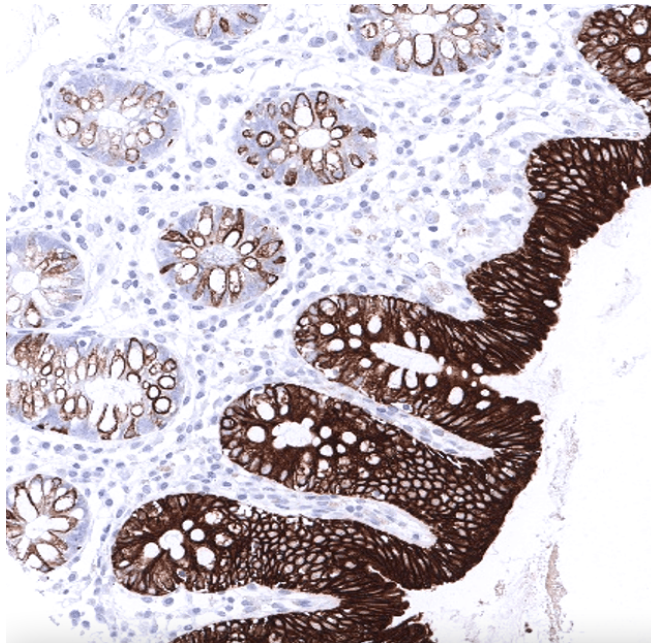
**Product data:**

**Immunohistochemistry (IHC):**

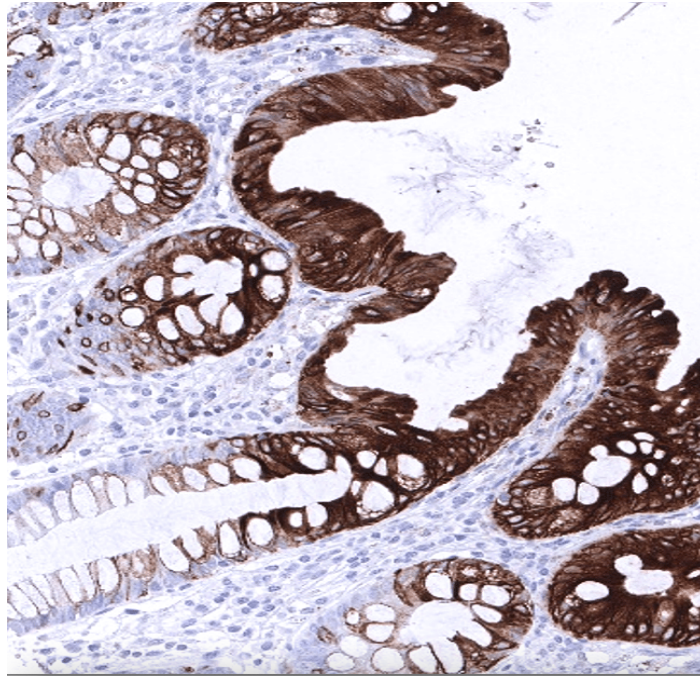
This product was successfully used to stain epithelial cells in all human intestinal mucosa, such as in appendix, ileum and colon sections. Recommended concentration: 1-3ug/ml



Formaldehyde-fixed, paraffin-embedded human appendix stained with KRT20 Rabbit Recombinant Antibody AE00363 at 1-2ug/ml for 60 minutes at 37°C. Epitope retrieval: Autoclave at 121°C, pH7.8 for 5 min followed by 20 min cooling. DAB staining by HRP polymer.



Formaldehyde-fixed, paraffin-embedded human ileum stained with KRT20 Rabbit Recombinant Antibody AE00363 at 1-2ug/ml for 60 minutes at 37°C. Epitope retrieval: Autoclave at 121°C, pH7.8 for 5 min followed by 20 min cooling. DAB staining by HRP polymer.



Formaldehyde-fixed, paraffin-embedded human colon stained with KRT20 Rabbit Recombinant Antibody AE00363 at 1-2ug/ml for 60 minutes at 37°C. Epitope retrieval: Autoclave at 121°C, pH7.8 for 5 min followed by 20 min cooling. DAB staining by HRP polymer.

#### Tissue Microarray Validation:

##### Normal tissues

##### **Strong positive**

appendix mucosa  
colon mucosa  
duodenum mucosa  
ileum mucosa  
rectum mucosa  
stomach

##### **Weak to moderate**

urothelium

##### **No staining at all**

adipose  
adrenal gland  
aorta, media  
appendix muscular wall  
bone marrow  
bronchus mucosa  
cerebellum  
cerebrum  
colon muscular wall  
duodenum Brunner gland  
endocervix  
endometrium  
epididymis  
gallbladder  
heart muscle  
kidney  
liver  
lung  
lymph node  
myometrium  
ovarian stroma  
pancreas  
parathyroid gland

pituitary gland  
seminal vesicle  
skeletal muscle  
spleen  
testis  
thyroid gland  
urinary bladder muscular wall

---

### Cancer tissues

<b>Strong positive</b>	<b>Weak to moderate</b>	<b>No staining at all</b>
colorectal adenocarcinoma	Merkel cell carcinoma	
endometrioid endometrial carcinoma	prostate adenocarcinoma	
gastric adenocarcinoma		
ovary mucinous carcinoma		

---