



TMA-validated antibodies

Cat nr AE00364

Product Datasheet

Rabbit Recombinant Antibody, AE537R to:

Decorin

bone proteoglycan II; decorin; CSCD; DCN; DSPG2; PG40; PG-40; PG-S2; PGII; PGS2; SLRR1B

Cellular localization extracellular matrix, secreted

Official Symbol (Gene) DCN
GenelD 1634
SwissProt P07585

Confirmed Applications IHC
Positive controls muscle, glands, intestines

Aeonian Rating© 91

Purification By Protein A from bioreactor concentrate

Formulation 0.2 mg IgG/ml in PBS with 0.5% BSA & 0.05% azide.
 0.2 mg IgG/ml in PBS with 0.05% azide, without BSA.

Amount 200ug 1000ug
Isotype Rabbit IgG

Confirmed species reactivity Human
Immunogen Recombinant fragment within the aa 212-336 region of human Decorin protein
Epitope within aa 212-336 region

Storage instructions Avoid repeated freeze/thaw cycles. For long term storage, keep small aliquots at -20C or -80C and keep one aliquot at 4C for daily experimentations. Azide will preserve antibody at 4C for 6-12 months, when kept away from direct sun light.

Expiration Integrity warranted for 24 months after purchase when handled and stored according to instructions, see below.

Warranty This product is only warranted for the specifications as described in this product sheet and only when the product is handled and stored according to instructions. User should validate this antibody in the application and tissue/cell type as required, after confirmation of integrity upon receipt is obtained by reproducing the performance as described below. Should such confirmation not be attempted, any warranty is void. In case of non-conformance, user needs to contact us immediately for replacement or refund.

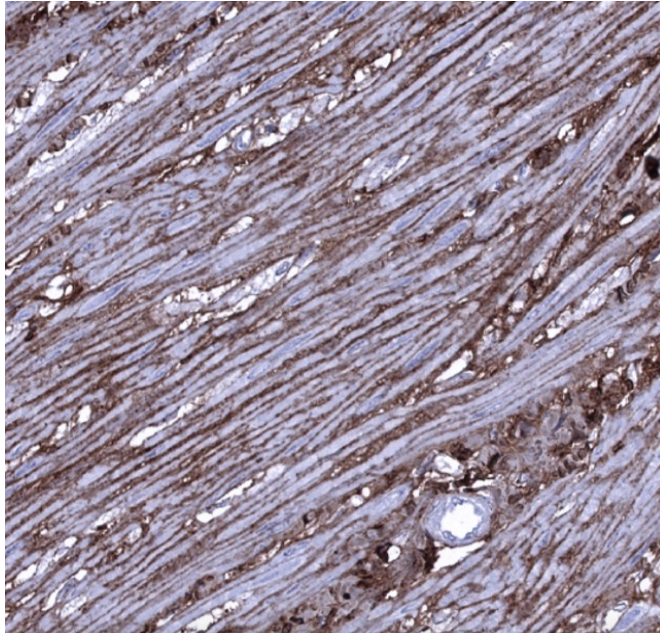
Liability This product is for in vitro research use only. Any other applications, such as diagnostics or therapeutics, or in vivo experiments, and the validation of this product therein, are solely at the responsibility of the buyer/user.

Product performance see next pages

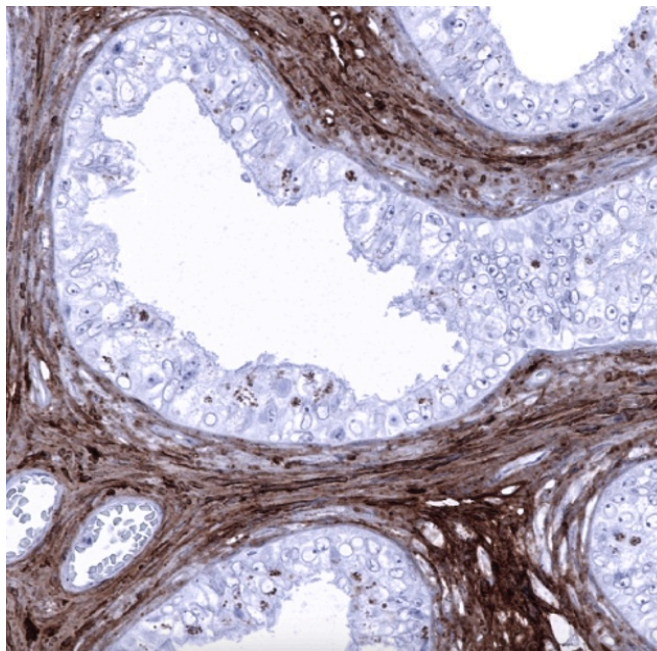
Product data:

Immunohistochemistry (IHC):

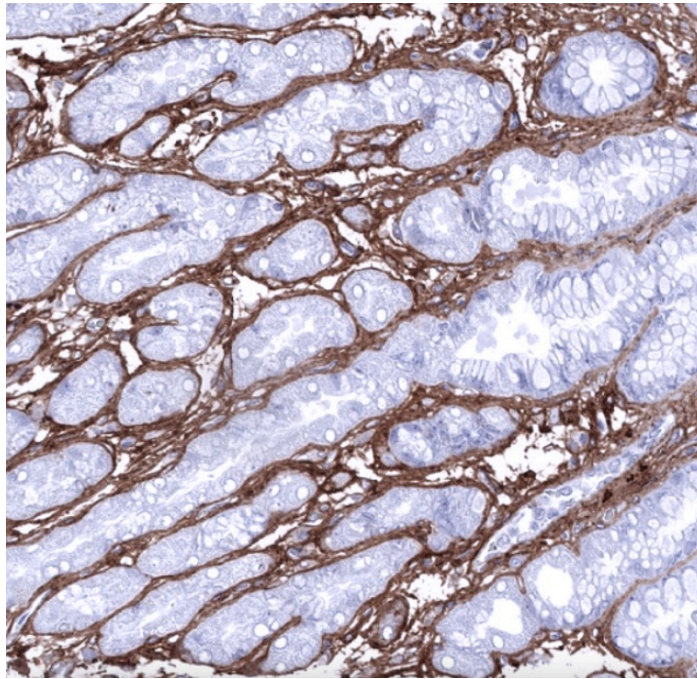
This product was successfully used to stain human muscle tissues, and stroma in glands and intestines, such as in colon muscular wall, epididymis, and gastric mucosa sections. Recommended concentration: 1-3ug/ml



Formaldehyde-fixed, paraffin-embedded human colon muscular wall stained with Decorin Rabbit Recombinant Antibody AE00364 at 1-2ug/ml for 60 minutes at 37°C. Epitope retrieval: Autoclave at 121°C, pH7.8 for 5 min followed by 20 min cooling. DAB staining by HRP polymer.



Formaldehyde-fixed, paraffin-embedded human epididymis stained with Decorin Rabbit Recombinant Antibody AE00364 at 1-2ug/ml for 60 minutes at 37°C. Epitope retrieval: Autoclave at 121°C, pH7.8 for 5 min followed by 20 min cooling. DAB staining by HRP polymer.



Formaldehyde-fixed, paraffin-embedded human gastric mucosa stained with Decorin Rabbit Recombinant Antibody AE00364 at 1-2ug/ml for 60 minutes at 37°C. Epitope retrieval: Autoclave at 121°C, pH7.8 for 5 min followed by 20 min cooling. DAB staining by HRP polymer.

Tissue Microarray Validation:

Normal tissues

Strong positive

appendix mucosa
 appendix muscular wall
 breast
 bronchus mucosa
 colon muscular wall
 duodenum Brunner gland
 ectocervix
 endocervix
 endometrium, pregnancy
 epididymis
 esophagus squamous epithelium
 fallopian tube
 heart muscle
 myometrium
 ovarian stroma
 placenta
 prostate
 rectum mucosa
 seminal vesicle
 sinus paranasalis
 skin
 stomach
 testis

Weak to moderate

adrenal gland
 colon mucosa
 duodenum mucosa
 endometrium
 gallbladder
 ileum mucosa
 pancreas
 parathyroid gland
 parotid gland
 pituitary gland, anterior lobe
 tonsil

No staining at all

adipose
 aorta, media
 bone marrow
 cerebellum
 cerebrum
 kidney
 liver
 lymph node
 spleen
 thymus

thyroid gland
urinary bladder muscular wall
urothelium

Cancer tissues

Strong positive	Weak to moderate	No staining at all
anal squamous cell carcinoma	breast cancer no special type	hepatocellular carcinoma
colorectal adenocarcinoma	high-grade serous carcinoma	Hodgkin's lymphoma
esophagus adenocarcinoma		Merkel cell carcinoma
leiomyosarcoma		Warthin tumor
liposarcoma		
pancreas neuroendocrine tumor		
pancreatic ductal adenocarcinoma		
