



TMA-validated antibodies

**Cat nr AE00365**

**Product Datasheet**

Rabbit Recombinant Antibody, AE035R to:

## CDH1

Cadherin 1; Cadherin-1; E-Cadherin; Uvomorulin; Arc-1; BCDS1; CADH1; CAM 120/80CD324; CDH1; CDHE; ECAD; LCAM; UVO

Cellular localization                      plasma membrane, cell surface

Official Symbol (Gene)                      CDH1  
GenelD    999  
SwissProt     P12830

Confirmed Applications                      IHC  
Positive controls                                prostate, placenta, skin

Aeonian Rating©                                90

Purification                                      By Protein A from bioreactor concentrate

Formulation                                       0.2 mg IgG/ml in PBS with 0.5% BSA & 0.05% azide.  
 0.2 mg IgG/ml in PBS with 0.05% azide, without BSA.

Amount     200ug                                       1000ug  
Isotype    Rabbit IgG

Confirmed species reactivity                Human  
Immunogen                                        Recombinant full-length human E-Cadherin protein

Epitope    Unknown

Storage instructions                            Avoid repeated freeze/thaw cycles. For long term storage, keep small aliquots at -20C or -80C and keep one aliquot at 4C for daily experimentations. Azide will preserve antibody at 4C for 6-12 months, when kept away from direct sun light.

Expiration                                        Integrity warranted for 24 months after purchase when handled and stored according to instructions, see below.

Warranty    This product is only warranted for the specifications as described in this product sheet and only when the product is handled and stored according to instructions. User should validate this antibody in the application and tissue/cell type as required, after confirmation of integrity upon receipt is obtained by reproducing the performance as described below. Should such confirmation not be attempted, any warranty is void. In case of non-conformance, user needs to contact us immediately for replacement or refund.

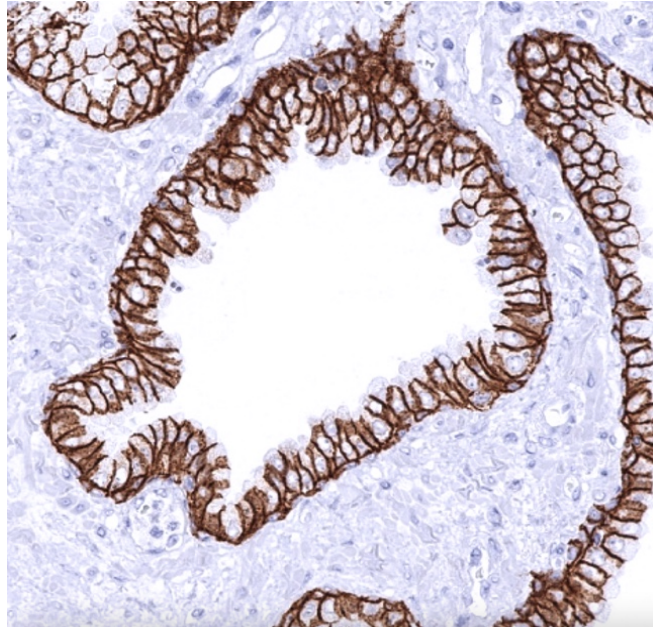
Liability    This product is for in vitro research use only. Any other applications, such as diagnostics or therapeutics, or in vivo experiments, and the validation of this product therein, are solely at the responsibility of the buyer/user.

Product performance                            see next pages

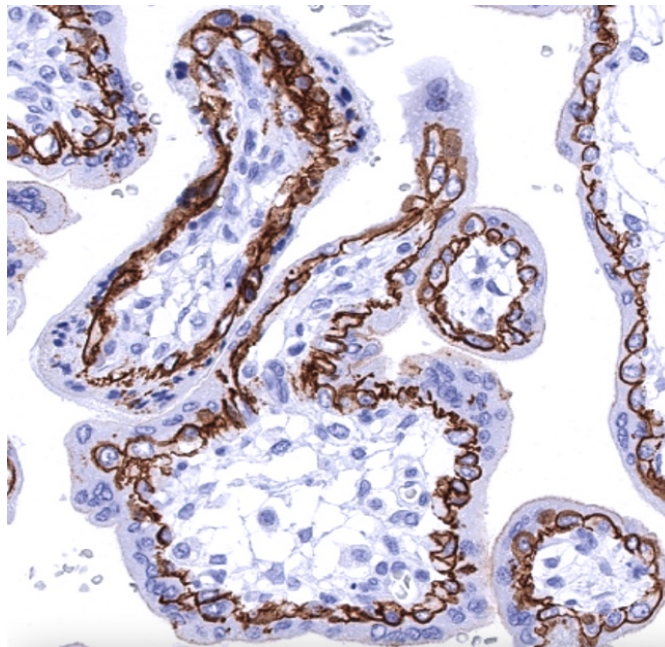
**Product data:**

**Immunohistochemistry (IHC):**

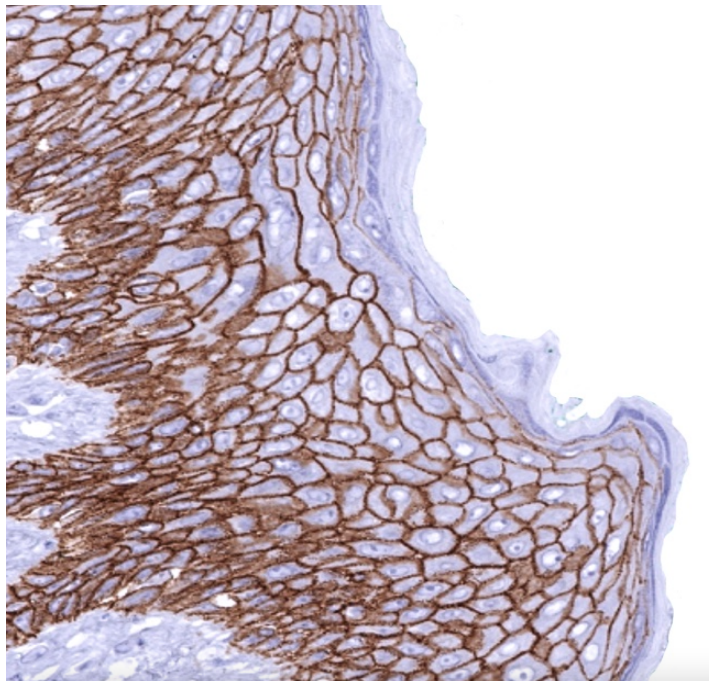
This product was successfully used to stain human epithelium cells in intestines, glands and other epithelium-containing organs, cytotrophoblasts and keratinocytes such as in prostate, placenta and skin sections, respectively. Recommended concentration: 1-3ug/ml



Formaldehyde-fixed, paraffin-embedded human prostate stained with CDH1 Rabbit Recombinant Antibody AE00365 at 1-2ug/ml for 60 minutes at 37°C. Epitope retrieval: Autoclave at 121°C, pH7.8 for 5 min followed by 20 min cooling. DAB staining by HRP polymer.



Formaldehyde-fixed, paraffin-embedded human placenta stained with CDH1 Rabbit Recombinant Antibody AE00365 at 1-2ug/ml for 60 minutes at 37°C. Epitope retrieval: Autoclave at 121°C, pH7.8 for 5 min followed by 20 min cooling. DAB staining by HRP polymer.



Formaldehyde-fixed, paraffin-embedded human skin stained with CDH1 Rabbit Recombinant Antibody AE00365 at 1-2ug/ml for 60 minutes at 37°C. Epitope retrieval: Autoclave at 121°C, pH7.8 for 5 min followed by 20 min cooling. DAB staining by HRP polymer.

#### Tissue Microarray Validation:

##### Normal tissues

##### Strong positive

appendix mucosa  
 bronchus mucosa  
 colon mucosa  
 duodenum Brunner gland  
 duodenum mucosa  
 ectocervix  
 endocervix  
 endometrium  
 epididymis  
 esophageus squamous epithelium  
 fallopian tube  
 gallbladder  
 ileum mucosa  
 kidney  
 liver  
 pancreas  
 parathyroid gland  
 parotid gland  
 placenta  
 pregnant uterus  
 prostate  
 rectum mucosa

##### Weak to moderate

breast  
 lung  
 pituitary gland, anterior lobe  
 spleen  
 thymus

##### No staining at all

adipose  
 adrenal gland  
 aorta, media  
 appendix muscular wall  
 bone marrow  
 cerebellum  
 cerebrum  
 colon muscular wall  
 heart muscle  
 lymph node  
 myometrium  
 ovarian stroma  
 pituitary gland, posterior lobe  
 skeletal muscle  
 testis  
 urinary bladder muscular wall

seminal vesicle  
sinus paranasalis  
skin  
stomach  
thyroid gland  
tonsil epithelium  
urothelium

---

### Cancer tissues

---

#### Strong positive

breast cancer no special type

chromophobe renal cell carcinoma

endometrial serous adenocarcinoma

follicular thyroid carcinoma

medullary thyroid cancer

pancreatic ductal adenocarcinoma

---

#### Weak to moderate

gastric adenocarcinoma

seminoma

#### No staining at all

clear cell renal cell carcinoma

lobular breast cancer