



TMA-validated antibodies

Cat nr AE00366

Product Datasheet

Rabbit Recombinant Antibody, AE648R to:

Elastin

Elastin; Tropoelastin; ELN; ADCL1; SVAS; WBS; WS

Cellular localization extracellular space, secreted

Official Symbol (Gene) ELN
GenelD 2006
SwissProt P15502

Confirmed Applications IHC
Positive controls gallbladder, prostate, testis

Aeonian Rating© 90

Purification By Protein A from bioreactor concentrate

Formulation 0.2 mg IgG/ml in PBS with 0.5% BSA & 0.05% azide.
 0.2 mg IgG/ml in PBS with 0.05% azide, without BSA.

Amount 200ug 1000ug
Isotype Rabbit IgG

Confirmed species reactivity Human
Immunogen Recombinant full-length human Elastin protein

Epitope Unknown

Storage instructions Avoid repeated freeze/thaw cycles. For long term storage, keep small aliquots at -20C or -80C and keep one aliquot at 4C for daily experimentations. Azide will preserve antibody at 4C for 6-12 months, when kept away from direct sun light.

Expiration Integrity warranted for 24 months after purchase when handled and stored according to instructions, see below.

Warranty This product is only warranted for the specifications as described in this product sheet and only when the product is handled and stored according to instructions. User should validate this antibody in the application and tissue/cell type as required, after confirmation of integrity upon receipt is obtained by reproducing the performance as described below. Should such confirmation not be attempted, any warranty is void. In case of non-conformance, user needs to contact us immediately for replacement or refund.

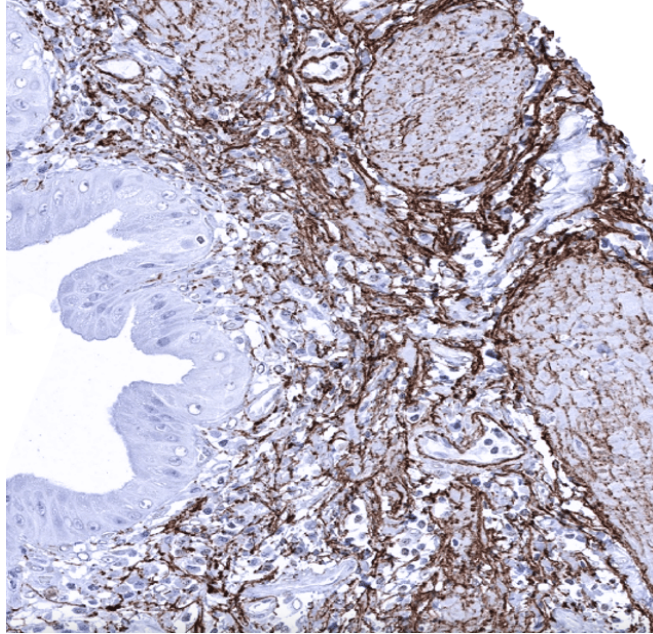
Liability This product is for in vitro research use only. Any other applications, such as diagnostics or therapeutics, or in vivo experiments, and the validation of this product therein, are solely at the responsibility of the buyer/user.

Product performance see next pages

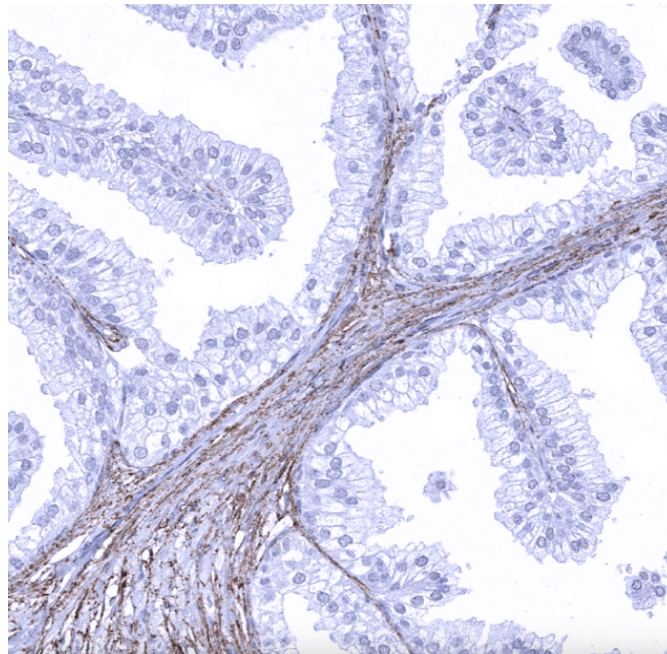
Product data:

Immunohistochemistry (IHC):

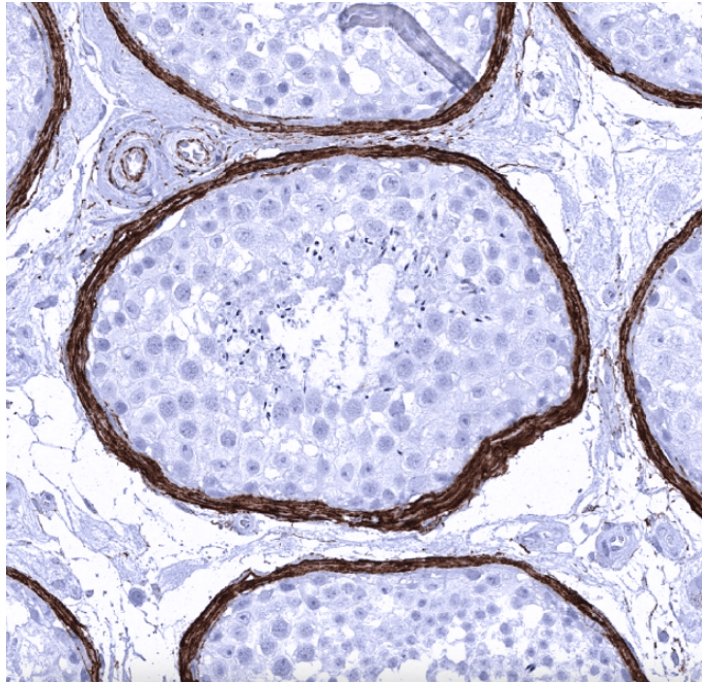
This product was successfully used to stain elastin fibres in lamina propria, stroma and surrounding smooth muscle cells in human gallbladder, prostate and testis sections. Recommended concentration: 1-3ug/ml



Formaldehyde-fixed, paraffin-embedded human gall bladder stained with Elastin Rabbit Recombinant Antibody AE00366 at 1-2ug/ml for 60 minutes at 37°C. Epitope retrieval: Autoclave at 121°C, pH7.8 for 5 min followed by 20 min cooling. DAB staining by HRP polymer.



Formaldehyde-fixed, paraffin-embedded human prostate stained with Elastin Rabbit Recombinant Antibody AE00366 at 1-2ug/ml for 60 minutes at 37°C. Epitope retrieval: Autoclave at 121°C, pH7.8 for 5 min followed by 20 min cooling. DAB staining by HRP polymer.



Formaldehyde-fixed, paraffin-embedded human testis stained with Elastin Rabbit Recombinant Antibody AE00366 at 1-2ug/ml for 60 minutes at 37°C. Epitope retrieval: Autoclave at 121°C, pH7.8 for 5 min followed by 20 min cooling. DAB staining by HRP polymer.

Tissue Microarray Validation:

Normal tissues

Strong positive

aorta, media
 appendix muscular wall
 bronchus mucosa
 colon mucosa
 colon muscular wall
 duodenum mucosa
 ectocervix
 endometrium
 epididymis
 esophageal squamous epithelium
 fallopian tube
 gallbladder
 heart muscle
 lung
 myometrium
 ovarian stroma
 prostate
 rectum mucosa
 seminal vesicle
 skeletal muscle
 stomach
 testis
 urinary bladder muscular wall
 urothelium

Weak to moderate

adrenal gland medulla
 appendix mucosa
 duodenum Brunner gland
 endocervix
 ileum mucosa
 kidney
 liver central veins
 pancreas
 parathyroid gland
 pituitary gland posterior lobe
 sinus paranasalis
 skin
 spleen
 thymus
 thyroid gland

No staining at all

adipose
 bone marrow
 breast
 cerebellum
 cerebrum
 lymph node
 parotid gland
 pituitary gland anterior lobe
 placenta
 pregnant uterus
 tonsil

Cancer tissues

Strong positive	Weak to moderate	No staining at all
cervix squamous cell carcinoma	esophagus adenocarcinoma	clear cell ovarian carcinoma
oral squamous cell carcinoma	lobular breast cancer	esophagus squamous cell carcinoma
prostate adenocarcinoma	papillary renal cell carcinoma	follicular thyroid carcinoma
		high-grade serous carcinoma
		papillary thyroid carcinoma
		pharyngeal squamous cell carcinoma