



TMA-validated antibodies

Cat nr AE00367

Product Datasheet

Rabbit Recombinant Antibody, AE326R to:

EpCAM

Adenocarcinoma-associated antigen; Cell surface glycoprotein Trop-1; Epithelial Cell Adhesion Molecule; Epithelial cell surface antigen; Epithelial glycoprotein 314; Major gastrointestinal tumor-associated protein GA733-2; Tumor-associated calcium signal transducer 1; CD326; DIAR5; EGP; EGP-2; EGP314; EGP40; Ep-CAM; ESA; hEGP314; HNPCC8; KS1/4; KS 1/4 antigen; KSA; M4S1; MIC18; MK-1; TACSTD1; TROP1

Cellular localization	plasma membrane, cell surface
Official Symbol (Gene)	EPCAM
GenelD	4072
SwissProt	P16422

Confirmed Applications	IHC
Positive controls	epithelia, ileum, endometrium, adenocarcinomas
Aeonian Rating©	93

Purification By Protein A from bioreactor concentrate

Formulation	<input type="checkbox"/>	0.2 mg IgG/ml in PBS with 0.5% BSA & 0.05% azide.
	<input type="checkbox"/>	0.2 mg IgG/ml in PBS with 0.05% azide, without BSA.
Amount	<input type="checkbox"/>	200ug
	<input type="checkbox"/>	1000ug
Isotype		Rabbit IgG

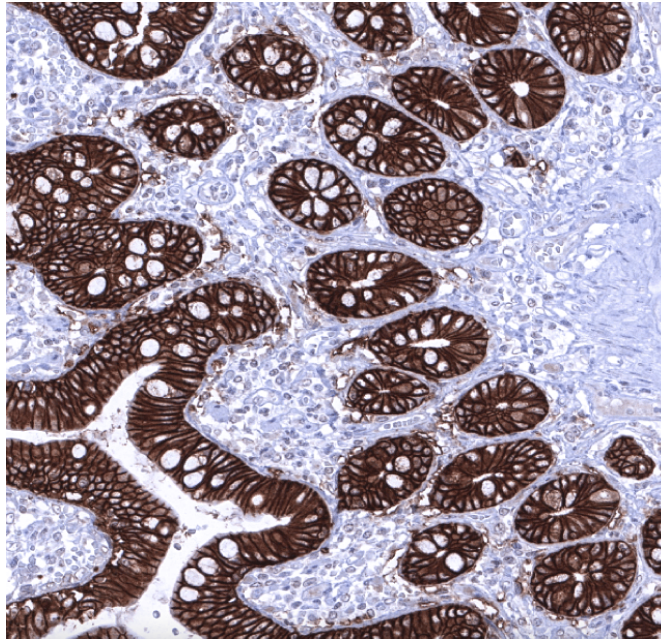
Confirmed species reactivity	Human
Immunogen	Recombinant fragment of within the aa 100-224 region of human EpCAM protein
Epitope	Extracellular domain within the aa 100-224 region

Storage instructions	Avoid repeated freeze/thaw cycles. For long term storage, keep small aliquots at -20C or -80C and keep one aliquot at 4C for daily experimentations. Azide will preserve antibody at 4C for 6-12 months, when kept away from direct sun light.
Expiration	Integrity warranted for 24 months after purchase when handled and stored according to instructions, see below.
Warranty	This product is only warranted for the specifications as described in this product sheet and only when the product is handled and stored according to instructions. User should validate this antibody in the application and tissue/cell type as required, after confirmation of integrity upon receipt is obtained by reproducing the performance as described below. Should such confirmation not be attempted, any warranty is void. In case of non-conformance, user needs to contact us immediately for replacement or refund.
Liability	This product is for in vitro research use only. Any other applications, such as diagnostics or therapeutics, or in vivo experiments, and the validation of this product therein, are solely at the responsibility of the buyer/user.
Product performance	see next pages

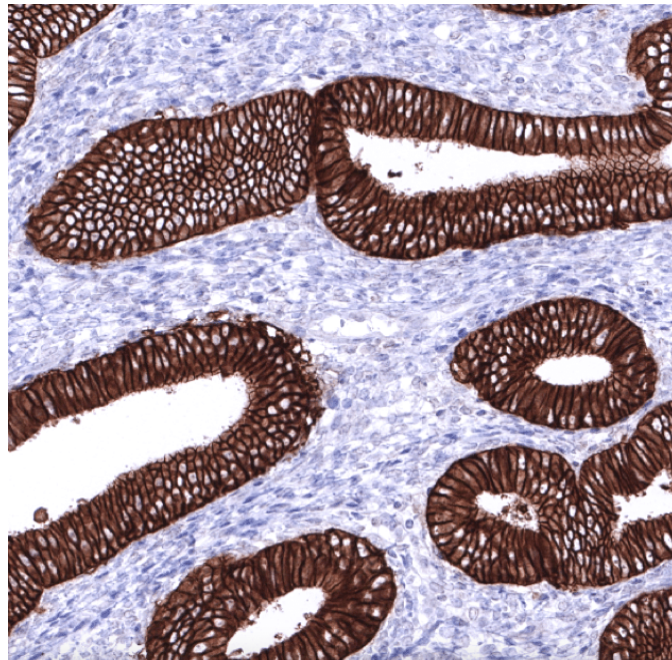
Product data:

Immunohistochemistry (IHC):

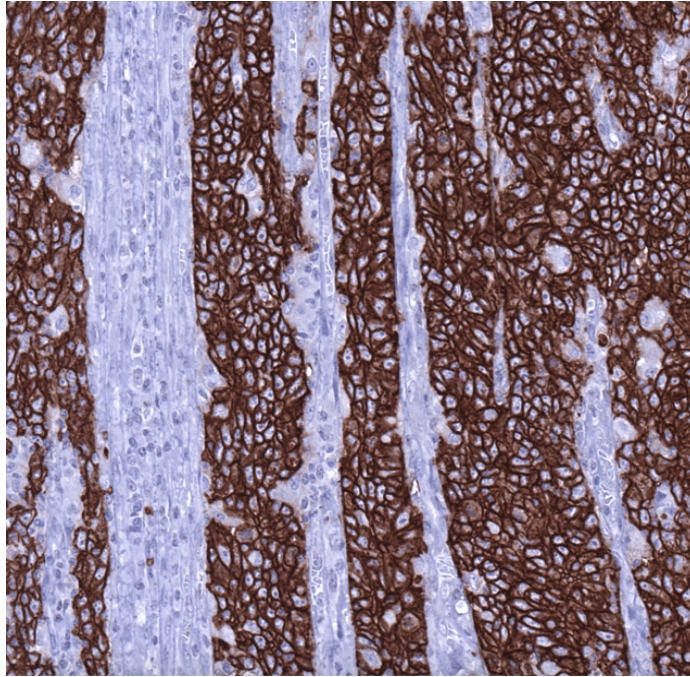
This product was successfully used to stain plasma membranes in all epithelial cells, for example in human ileum and endometrium sections, and in adenocarcinomas such as in gastric adenocarcinoma sections. Recommended concentration: 1-3ug/ml



Formaldehyde-fixed, paraffin-embedded human ileum stained with EpCAM Rabbit Recombinant Antibody AE00367 at 1-2ug/ml for 60 minutes at 37°C. Epitope retrieval: Autoclave at 121°C, pH7.8 for 5 min followed by 20 min cooling. DAB staining by HRP polymer.



Formaldehyde-fixed, paraffin-embedded human endometrium stained with EpCAM Rabbit Recombinant Antibody AE00367 at 1-2ug/ml for 60 minutes at 37°C. Epitope retrieval: Autoclave at 121°C, pH7.8 for 5 min followed by 20 min cooling. DAB staining by HRP polymer.



Formaldehyde-fixed, paraffin-embedded human gastric adenocarcinoma stained with EpCAM Rabbit Recombinant Antibody AE00367 at 1-2ug/ml for 60 minutes at 37°C. Epitope retrieval: Autoclave at 121°C, pH7.8 for 5 min followed by 20 min cooling. DAB staining by HRP polymer.

Tissue Microarray Validation:

Normal tissues

Strong positive

appendix mucosa
 bronchus mucosa
 colon mucosa
 duodenum Brunner gland
 duodenum mucosa
 endocervix
 endometrium
 epididymis
 fallopian tube
 gallbladder
 ileum mucosa
 kidney
 liver bile ducts
 pancreas
 parathyroid gland
 parotid gland
 pituitary gland anterior lobe
 prostate
 rectum mucosa
 seminal vesicle
 sinus paranasalis
 stomach
 thyroid gland
 urothelium

Weak to moderate

adrenal gland
 breast
 ectocervix
 esophagus squamous epithelium
 lung
 placenta
 testis
 thymus
 tonsil

No staining at all

adipose
 aorta, media
 appendix muscular wall
 bone marrow
 cerebellum
 cerebrum
 colon muscular wall
 heart muscle
 hepatocytes
 lymph node
 myometrium
 ovarian stroma
 pituitary gland posterior lobe
 skeletal muscle
 skin
 spleen
 urinary bladder muscular wall

Cancer tissues

Strong positive	Weak to moderate	No staining at all
basal cell carcinoma	cervical squamous cell carcinoma	anaplastic thyroid carcinoma
breast cancer no special type	diffuse large B-cell lymphoma	gastrointestinal stromal tumor
cholangiocarcinoma	esophagus squamous cell carcinoma	leiomyosarcoma
chromophobe renal cell carcinoma	invasive lobular carcinoma	pheochromocytoma
clear cell renal cell carcinoma	seminoma	small cell carcinoma of the bladder
colorectal adenocarcinoma		
endometrial serous adenocarcinoma		
esophagus adenocarcinoma		
gastric adenocarcinoma		
high-grade serous carcinoma		
lung adenocarcinoma		
pancreas neuroendocrine tumor		
papillary renal cell carcinoma		
prostate adenocarcinoma		
small cell lung carcinoma		
urothelial carcinoma		