



## Cat nr AE00368

## Product Datasheet

Rabbit Recombinant Antibody, AE564R to:

### ESR1

Estrogen receptor 1; Estrogen receptor-1; Estrogen receptor alpha; Estrogen receptor-alpha; ERalpha; ER-alpha; Estradiol receptor; Nuclear receptor subfamily 3 group A member 1; ER; ESR; ESRA; ESTRR; Era; NR3A1

Cellular localization nucleus

Official Symbol (Gene) ESR1  
GenelD 2099  
SwissProt P03372

Confirmed Applications IHC  
Positive controls epididymis, fallopian tube, endometrium  
Aeonian Rating© 93

Purification By Protein A from bioreactor concentrate

Formulation  0.2 mg IgG/ml in PBS with 0.5% BSA & 0.05% azide.  
 0.2 mg IgG/ml in PBS with 0.05% azide, without BSA.  
Amount  200ug  1000ug  
Isotype Rabbit IgG

Confirmed species reactivity Human  
Immunogen Recombinant fragment of within the aa 495-595 region of human ESR1 protein  
Epitope Within the C-terminal aa 495-595 region

Storage instructions Avoid repeated freeze/thaw cycles. For long term storage, keep small aliquots at -20C or -80C and keep one aliquot at 4C for daily experimentations. Azide will preserve antibody at 4C for 6-12 months, when kept away from direct sun light.

Expiration Integrity warranted for 24 months after purchase when handled and stored according to instructions, see below.

Warranty This product is only warranted for the specifications as described in this product sheet and only when the product is handled and stored according to instructions. User should validate this antibody in the application and tissue/cell type as required, after confirmation of integrity upon receipt is obtained by reproducing the performance as described below. Should such confirmation not be attempted, any warranty is void. In case of non-conformance, user needs to contact us immediately for replacement or refund.

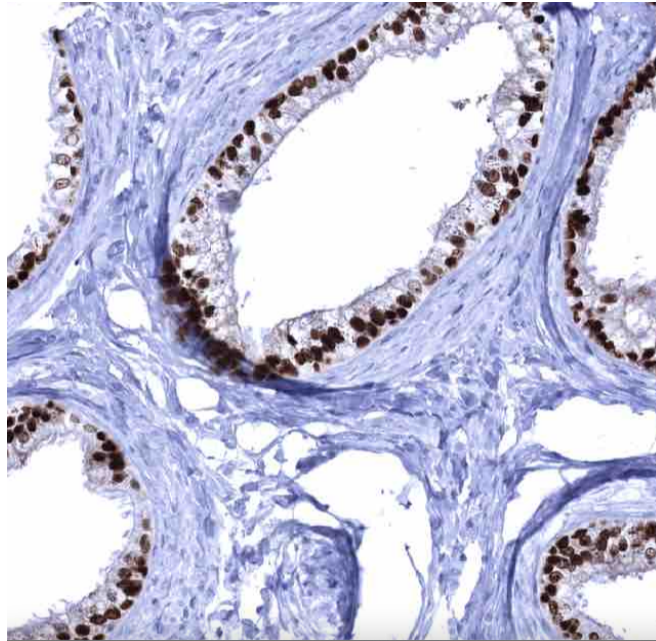
Liability This product is for in vitro research use only. Any other applications, such as diagnostics or therapeutics, or in vivo experiments, and the validation of this product therein, are solely at the responsibility of the buyer/user.

Product performance see next pages

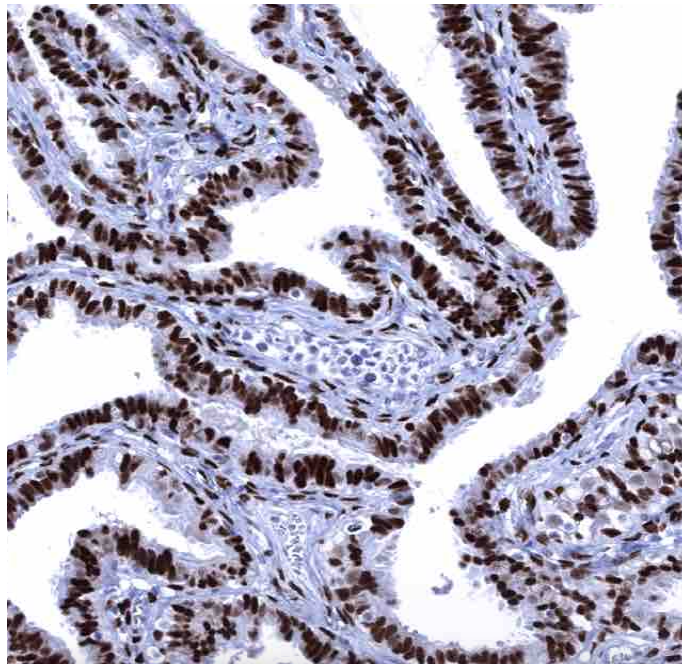
**Product data:**

**Immunohistochemistry (IHC):**

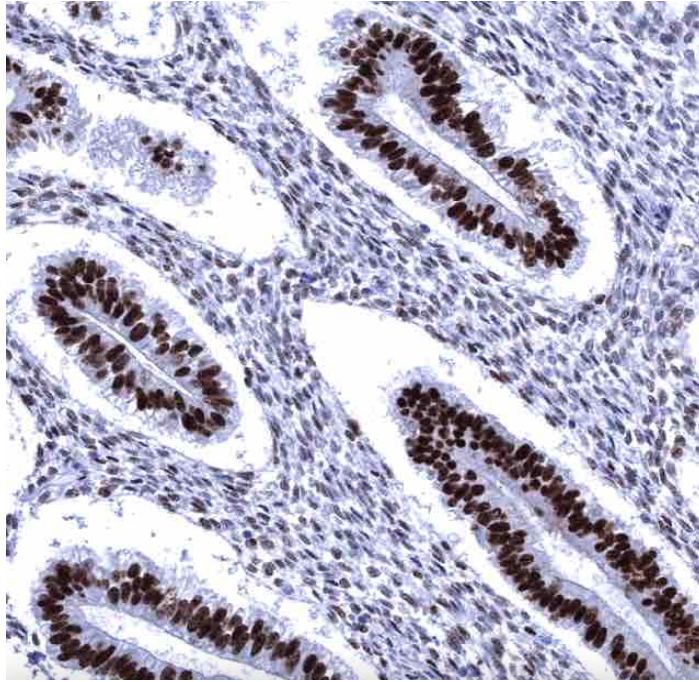
This product was successfully used to stain nuclei in epithelial cells of human epididymis, fallopian tube and endometrium sections. Recommended concentration: 1-3ug/ml



Formaldehyde-fixed, paraffin-embedded human epididymis stained with ESR1 Rabbit Recombinant Antibody AE00368 at 1-2ug/ml for 60 minutes at 37°C. Epitope retrieval: Autoclave at 121°C, pH7.8 for 5 min followed by 20 min cooling. DAB staining by HRP polymer.



Formaldehyde-fixed, paraffin-embedded human fallopian tube stained with ESR1 Rabbit Recombinant Antibody AE00368 at 1-2ug/ml for 60 minutes at 37°C. Epitope retrieval: Autoclave at 121°C, pH7.8 for 5 min followed by 20 min cooling. DAB staining by HRP polymer.



Formaldehyde-fixed, paraffin-embedded human endometrium, secretory phase stained with ESR1 Rabbit Recombinant Antibody AE00368 at 1-2ug/ml for 60 minutes at 37°C. Epitope retrieval: Autoclave at 121°C, pH7.8 for 5 min followed by 20 min cooling. DAB staining by HRP polymer.

#### Tissue Microarray Validation:

##### Normal tissues

##### Strong positive

ectocervix  
 endocervix  
 endometrium  
 epididymis, cauda  
 fallopian tube  
 myometrium

##### Weak to moderate

parotid gland  
 pituitary gland anterior lobe  
 urothelium

##### No staining at all

adipose  
 adrenal gland  
 aorta, media  
 appendix mucosa  
 appendix muscular wall  
 bone marrow  
 breast  
 bronchus mucosa  
 cerebellum  
 cerebrum  
 colon mucosa  
 colon muscular wall  
 duodenum Brunner gland  
 duodenum mucosa  
 epididymis, corpus  
 esophagus squamous epithelium  
 gallbladder  
 heart muscle  
 ileum mucosa  
 kidney  
 lung  
 lymph node  
 ovarian stroma  
 pancreas

parathyroid gland  
pituitary gland posterior lobe  
placenta  
prostate  
rectum mucosa  
seminal vesicle  
sinus paranasalis  
skeletal muscle  
skin  
spleen  
stomach  
testis  
thymus  
thyroid gland  
tonsil  
urinary bladder muscular wall

---

### Cancer tissues

---

#### Strong positive

breast cancer no special type  
endometrioid ovarian carcinoma  
high-grade serous carcinoma

#### Weak to moderate

---

#### No staining at all

clear cell renal cell carcinoma  
colorectal adenocarcinoma  
esophagus adenocarcinoma  
oral squamous cell carcinoma  
papillary renal cell carcinoma

---