



Cat nr AE00370

Product Datasheet

Rabbit Recombinant Antibody, AE561R to:

Inhibin alpha

Inhibin A; inhibin alpha chain; inhibin alpha subunit; inhibin subunit alpha; INHA; INH-A

Cellular localization extracellular space, secreted

Official Symbol (Gene) INHA
GenelD 3623
SwissProt P05111

Confirmed Applications IHC
Positive controls Ovary, testis, placenta

Aeonian Rating© 90

Purification By Protein A from bioreactor concentrate

Formulation 0.2 mg IgG/ml in PBS with 0.5% BSA & 0.05% azide.
 0.2 mg IgG/ml in PBS with 0.05% azide, without BSA.

Amount 200ug 1000ug
Isotype Rabbit IgG

Confirmed species reactivity Human
Immunogen Recombinant fragment of within the aa 233-362 region of human Inhibin alpha protein

Epitope Within the aa 233-362 region (mature alpha chain)

Storage instructions Avoid repeated freeze/thaw cycles. For long term storage, keep small aliquots at -20C or -80C and keep one aliquot at 4C for daily experimentations. Azide will preserve antibody at 4C for 6-12 months, when kept away from direct sun light.

Expiration Integrity warranted for 24 months after purchase when handled and stored according to instructions, see below.

Warranty This product is only warranted for the specifications as described in this product sheet and only when the product is handled and stored according to instructions. User should validate this antibody in the application and tissue/cell type as required, after confirmation of integrity upon receipt is obtained by reproducing the performance as described below. Should such confirmation not be attempted, any warranty is void. In case of non-conformance, user needs to contact us immediately for replacement or refund.

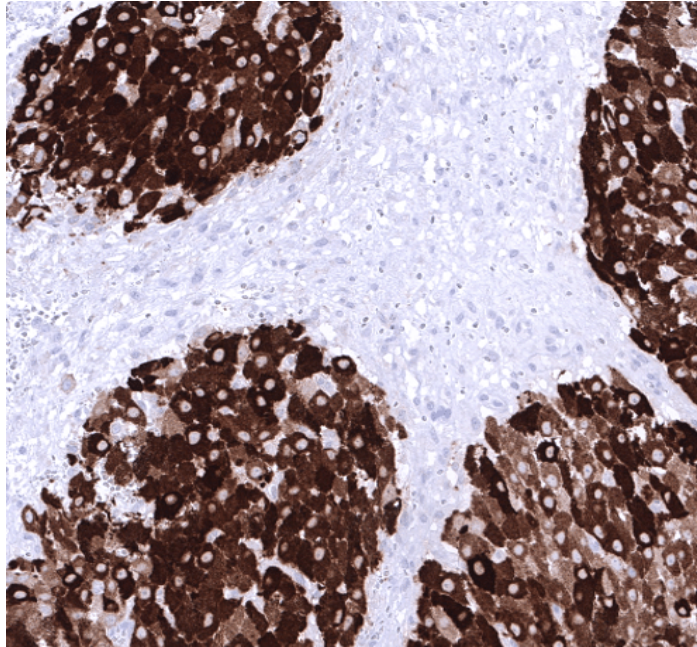
Liability This product is for in vitro research use only. Any other applications, such as diagnostics or therapeutics, or in vivo experiments, and the validation of this product therein, are solely at the responsibility of the buyer/user.

Product performance see next pages

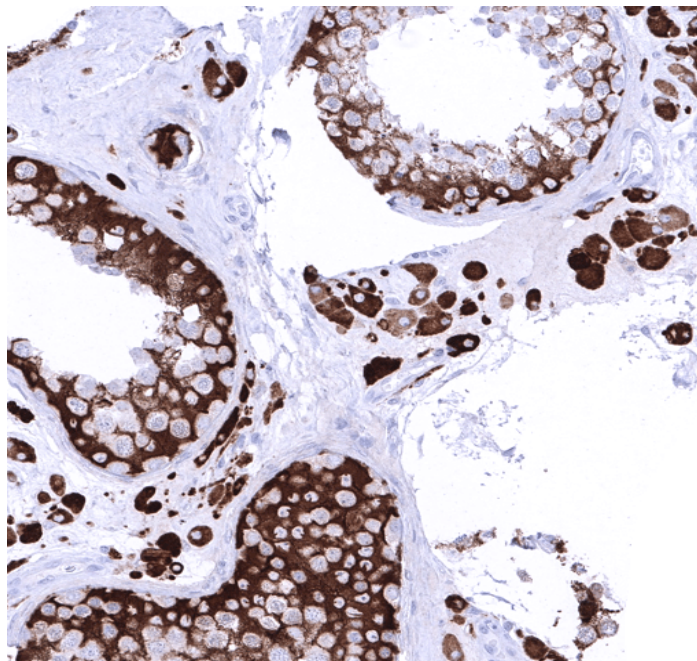
Product data:

Immunohistochemistry (IHC):

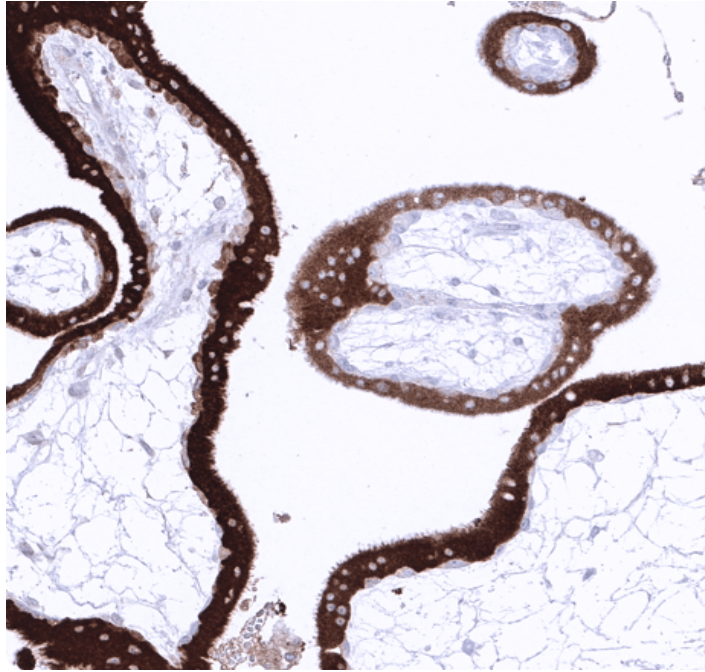
This product was successfully used to stain advanced follicular granulosa cells in human ovary, Sertoli and Leydig cells in human testis, and trophoblasts in human placenta sections. Recommended concentration: 1-3ug/ml



Formaldehyde-fixed, paraffin-embedded human ovary stained with Inhibin alpha Rabbit Recombinant Antibody AE00370 at 1-2ug/ml for 60 minutes at 37°C. Epitope retrieval: Autoclave at 121°C, pH7.8 for 5 min followed by 20 min cooling. DAB staining by HRP polymer.



Formaldehyde-fixed, paraffin-embedded human testis stained with Inhibin alpha Rabbit Recombinant Antibody AE00370 at 1-2ug/ml for 60 minutes at 37°C. Epitope retrieval: Autoclave at 121°C, pH7.8 for 5 min followed by 20 min cooling. DAB staining by HRP polymer.



Formaldehyde-fixed, paraffin-embedded human placenta stained with Inhibin alpha Rabbit Recombinant Antibody AE00370 at 1-2ug/ml for 60 minutes at 37°C. Epitope retrieval: Autoclave at 121°C, pH7.8 for 5 min followed by 20 min cooling. DAB staining by HRP polymer.

Tissue Microarray Validation:

Normal tissues

Strong positive

adrenal gland
 ovary advanced follicles
 placenta, early
 testis

Weak to moderate

ovary primary follicles
 ovarian stroma
 endometrium, pregnancy
 placenta, mature

No staining at all

adipose
 aorta, media
 appendix mucosa
 appendix muscular wall
 bone marrow
 breast
 bronchus mucosa
 cerebellum
 cerebrum
 colon mucosa
 colon muscular wall
 duodenum Brunner gland
 duodenum mucosa
 ectocervix
 endocervix
 endometrium
 epididymis
 esophagus squamous epithelium
 fallopian tube
 gallbladder
 heart muscle
 ileum mucosa
 kidney

liver
lung
lymph node
myometrium
parathyroid gland
parotid gland
pituitary gland
prostate
rectum mucosa
seminal vesicle
sinus paranasalis
skeletal muscle
skin
spleen
stomach
thymus
thyroid gland
tonsil
urothelium

Cancer tissues

Strong positive

adrenal cortical adenoma
adrenocortical carcinoma
lung adenocarcinoma
pancreas acinar cell carcinoma
pancreas neuroendocrine tumor

Weak to moderate

cholangiocarcinoma
colorectal adenocarcinoma

No staining at all

breast cancer no special type
esophagus squamous cell carcinoma
gastric adenocarcinoma
Merkel cell carcinoma
pancreas adenocarcinoma
papillary thyroid carcinoma
prostate adenocarcinoma
seminosa
