



## Cat nr AE00371

## Product Datasheet

Rabbit Recombinant Antibody, AE456R to:

### INSM1

Insulinoma-associated protein 1; INSM transcriptional repressor 1; Zinc finger protein IA-1; INSM1; IA1; IA-1

Cellular localization nucleus

Official Symbol (Gene) INSM1  
GenelD 3642  
SwissProt Q01101

Confirmed Applications IHC  
Positive controls neuroendocrine tumors, pancreas

Aeonian Rating© 92

Purification By Protein A from bioreactor concentrate

Formulation  0.2 mg IgG/ml in PBS with 0.5% BSA & 0.05% azide.  
 0.2 mg IgG/ml in PBS with 0.05% azide, without BSA.

Amount  200ug  1000ug  
Isotype Rabbit IgG

Confirmed species reactivity Human  
Immunogen Recombinant fragment of within the aa 81-125 region of human INSM1 protein

Epitope Within the aa 81-125 region

Storage instructions Avoid repeated freeze/thaw cycles. For long term storage, keep small aliquots at -20C or -80C and keep one aliquot at 4C for daily experimentations. Azide will preserve antibody at 4C for 6-12 months, when kept away from direct sun light.

Expiration Integrity warranted for 24 months after purchase when handled and stored according to instructions, see below.

Warranty This product is only warranted for the specifications as described in this product sheet and only when the product is handled and stored according to instructions. User should validate this antibody in the application and tissue/cell type as required, after confirmation of integrity upon receipt is obtained by reproducing the performance as described below. Should such confirmation not be attempted, any warranty is void. In case of non-conformance, user needs to contact us immediately for replacement or refund.

Liability This product is for in vitro research use only. Any other applications, such as diagnostics or therapeutics, or in vivo experiments, and the validation of this product therein, are solely at the responsibility of the buyer/user.

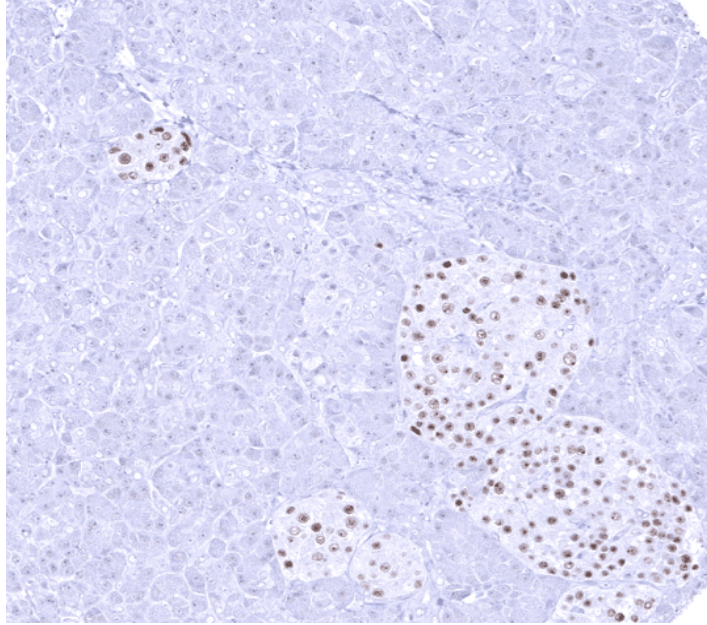
Product performance see next pages

**Product data:**

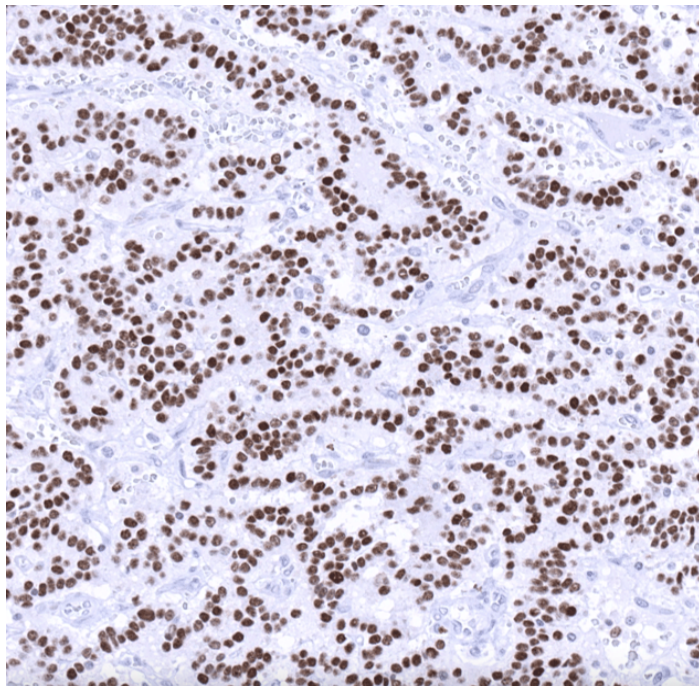
**Immunohistochemistry (IHC):**

This product was successfully used to stain nuclei in Islet of Langerhans cells in human pancreas, and neuroendocrine tumour cells in human lung, pancreas, prostate and urinary bladder sections.

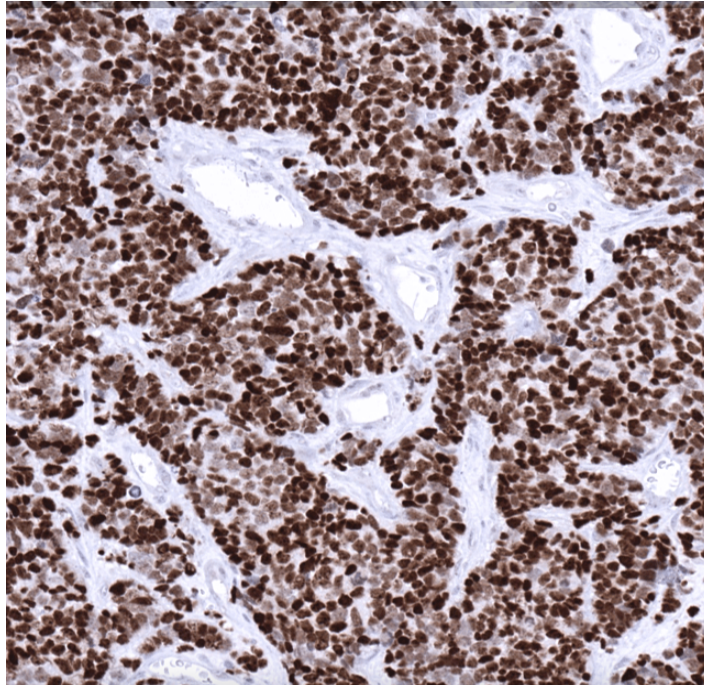
Recommended concentration: 1-3 µg/ml



Formaldehyde-fixed, paraffin-embedded human pancreas stained with INSM1 Rabbit Recombinant Antibody AE00371 at 1-2 µg/ml for 60 minutes at 37°C. Epitope retrieval: Autoclave at 121°C, pH7.8 for 5 min followed by 20 min cooling. DAB staining by HRP polymer.



Formaldehyde-fixed, paraffin-embedded human pancreas neuroendocrine tumour stained with INSM1 Rabbit Recombinant Antibody AE00371 at 1-2 µg/ml for 60 minutes at 37°C. Epitope retrieval: Autoclave at 121°C, pH7.8 for 5 min followed by 20 min cooling. DAB staining by HRP polymer.



Formaldehyde-fixed, paraffin-embedded human prostate small cell neuroendocrine tumour stained with INSM1 Rabbit Recombinant Antibody AE00371 at 1-2 µg/ml for 60 minutes at 37°C. Epitope retrieval: Autoclave at 121°C, pH7.8 for 5 min followed by 20 min cooling. DAB staining by HRP polymer.

## Tissue Microarray Validation:

### Normal tissues

<b>Strong positive</b>	<b>Weak to moderate</b>	<b>No staining at all</b>
adrenal gland medulla	pituitary gland, anterior lobe	adipose
pancreas	stomach	aorta media
	thymus	appendix mucosa
		appendix muscular wall
		bone marrow
		breast
		bronchus mucosa
		cerebellum
		cerebrum
		colon muscular wall
		duodenum Brunner gland
		duodenum mucosa
		ectocervix
		endocervix
		endometrium
		epididymis
		esophagus squamous epithelium
		fallopian tube
		gallbladder
		heart muscle
		ileum mucosa
		kidney
		liver

lung  
 lymph node  
 myometrium  
 ovarian stroma  
 parathyroid gland  
 parotid gland  
 pituitary gland posterior lobe  
 placenta  
 pregnant uterus  
 prostate  
 rectum mucosa  
 seminal vesicle  
 sinus paranasalis  
 skeletal muscle  
 skin  
 spleen  
 testis  
 thyroid gland  
 tonsil

---

**Cancer tissues**

<b>Strong positive</b>	<b>Weak to moderate</b>	<b>No staining at all</b>
ileum neuroendocrine tumour	colorectal adenocarcinoma	acinar cell carcinoma
lung neuroendocrine tumour	diffuse large B-cell lymphoma	adrenocortical carcinoma
medullary thyroid carcinoma	ovarian endometrioid carcinoma	cholangiocarcinoma
Merkel cell carcinoma	pharynx squamous cell carcinoma	clear cell renal cell carcinoma
pancreas neuroendocrine tumour		endometrioid endometrial carcinoma
pheochromocytoma		esophagus squamous cell carcinoma
prostate small cell neuroendocrine tumour		esophagus adenocarcinoma
urinary bladder small cell neuroendocrine tumour		gastric adenocarcinoma
		gastrointestinal stromal tumor
		hepatocellular carcinoma
		larynx squamous cell carcinoma
		lung adenocarcinoma
		malignant melanoma
		papillary renal cell carcinoma
		papillary thyroid carcinoma
		prostate adenocarcinoma
		seminoma
		thymoma
		urothelial carcinoma

---