



TMA-validated antibodies

Cat nr AE00372

Product Datasheet

Rabbit Recombinant Antibody, AE457R to:

Mammaglobin-A

Mammaglobin-A; secretoglobin family 2A member 2; mammaglobin A; mammaglobin-1; MGB1; UGB2; SCGB2A2

Cellular localization secreted

Official Symbol (Gene) SCGB2A2

GenelD 4250

SwissProt Q13296

Confirmed Applications IHC
Positive controls breast, breast carcinoma

Aeonian Rating© 90

Purification By Protein A from bioreactor concentrate

Formulation 0.2 mg IgG/ml in PBS with 0.5% BSA & 0.05% azide.
 0.2 mg IgG/ml in PBS with 0.05% azide, without BSA.

Amount 200ug 1000ug
Isotype Rabbit IgG

Confirmed species reactivity Human
Immunogen Recombinant full length human Mammaglobin-A protein

Epitope Unknown

Storage instructions Avoid repeated freeze/thaw cycles. For long term storage, keep small aliquots at -20C or -80C and keep one aliquot at 4C for daily experimentations. Azide will preserve antibody at 4C for 6-12 months, when kept away from direct sun light.

Expiration Integrity warranted for 24 months after purchase when handled and stored according to instructions, see below.

Warranty This product is only warranted for the specifications as described in this product sheet and only when the product is handled and stored according to instructions. User should validate this antibody in the application and tissue/cell type as required, after confirmation of integrity upon receipt is obtained by reproducing the performance as described below. Should such confirmation not be attempted, any warranty is void. In case of non-conformance, user needs to contact us immediately for replacement or refund.

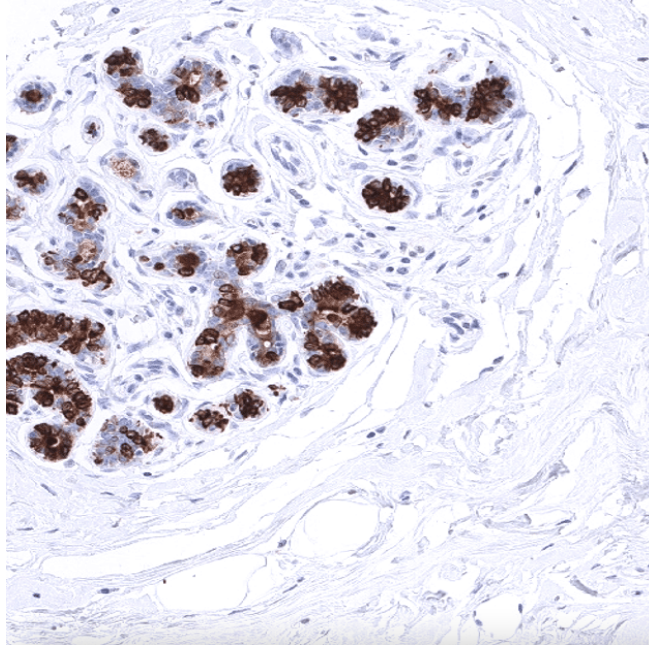
Liability This product is for in vitro research use only. Any other applications, such as diagnostics or therapeutics, or in vivo experiments, and the validation of this product therein, are solely at the responsibility of the buyer/user.

Product performance see next pages

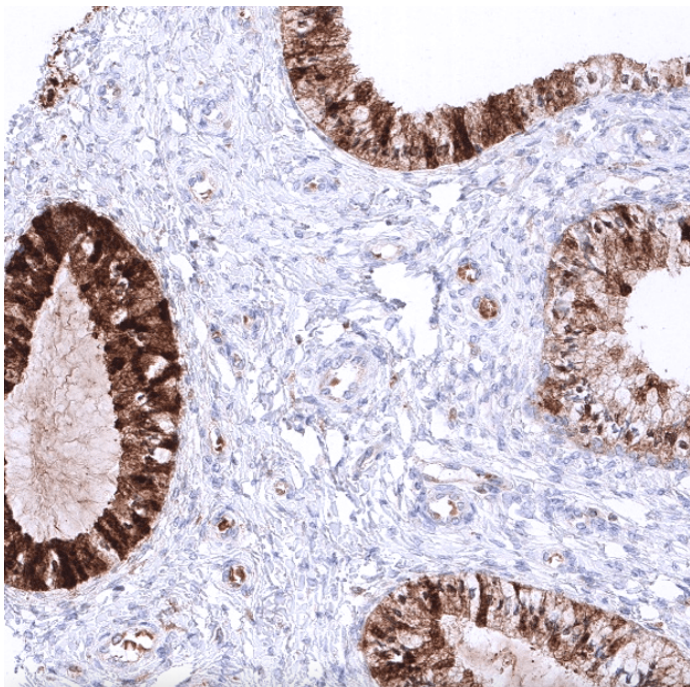
Product data:

Immunohistochemistry (IHC):

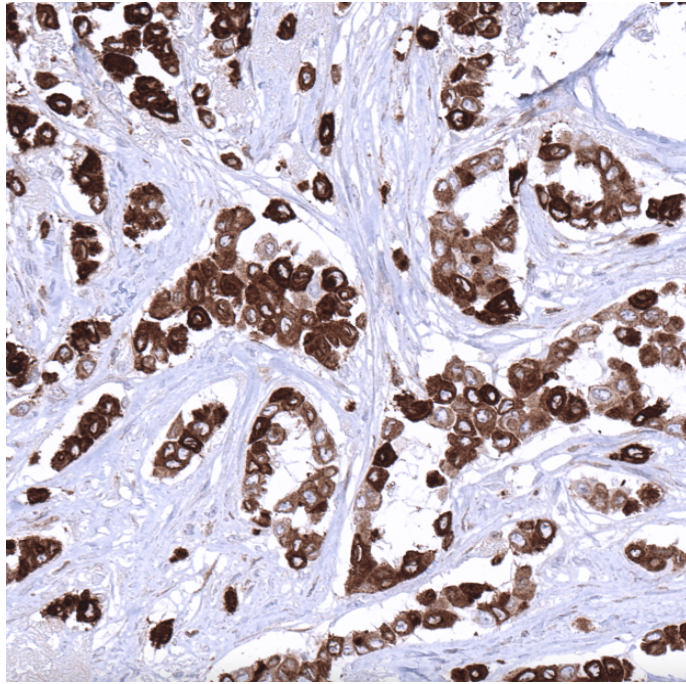
This product was successfully used to stain luminal cells in human breast and endocervix, and tumour cells in invasive lobular carcinoma sections. Recommended concentration: 1-3ug/ml



Formaldehyde-fixed, paraffin-embedded human breast stained with Mammaglobin-A Rabbit Recombinant Antibody AE00372 at 1-2 $\mu\text{g/ml}$ for 60 minutes at 37°C. Epitope retrieval: Autoclave at 121°C, pH7.8 for 5 min followed by 20 min cooling. DAB staining by HRP polymer.



Formaldehyde-fixed, paraffin-embedded human endocervix stained with Mammaglobin-A Rabbit Recombinant Antibody AE00372 at 1-2 $\mu\text{g/ml}$ for 60 minutes at 37°C. Epitope retrieval: Autoclave at 121°C, pH7.8 for 5 min followed by 20 min cooling. DAB staining by HRP polymer.



Formaldehyde-fixed, paraffin-embedded human invasive lobular carcinoma stained with Mammaplobin-A Rabbit Recombinant Antibody AE00372 at 1-2 µg/ml for 60 minutes at 37°C. Epitope retrieval: Autoclave at 121°C, pH7.8 for 5 min followed by 20 min cooling. DAB staining by HRP polymer.

Tissue Microarray Validation:

Normal tissues

Strong positive

breast
endocervix

Weak to moderate

endometrium pregnancy
epididymis

No staining at all

adipose
aorta, media
appendix mucosa
appendix muscular wall
bone marrow
bronchus mucosa
cerebellum
cerebrum
colon mucosa
colon muscular wall
duodenum Brunner gland
duodenum mucosa
ectocervix
esophagus squamous epithelium
fallopian tube
gallbladder
heart muscle
ileum mucosa
kidney
liver
lung
lymph node
myometrium

ovarian stroma
pancreas
parathyroid gland
parotid gland
pituitary gland posterior lobe
placenta
prostate
rectum mucosa
seminal vesicle
sinus paranasalis
skeletal muscle
skin
spleen
stomach
testis
thymus
thyroid gland
tonsil
urinary bladder muscular wall

Cancer tissues

Strong positive

endometrioid endometrial carcinoma
endometrioid ovarian carcinoma
invasive lobular carcinoma
pleomorphic adenoma

Weak to moderate

No staining at all

cholangiocarcinoma
clear cell renal cell carcinoma
high-grade serous carcinoma
medullary thyroid cancer
pancreas neuroendocrine tumor
pancreatic ductal adenocarcinoma
prostate adenocarcinoma
seminoma
small cell lung carcinoma
urothelial carcinoma
