



TMA-validated antibodies

Cat nr AE00373

Product Datasheet

Rabbit Recombinant Antibody, AE390R to:

Myelin Basic Protein

Myelin A1 protein; Myelin Basic Protein; Myelin membrane encephalitogenic protein; MBP

Cellular localization myelin sheath around axons

Official Symbol (Gene) MBP
GenelD 4155
SwissProt P02686

Confirmed Applications IHC
Positive controls cerebrum grey matter, cerebrum white matter, cerebellum, oligodendrocytes
Aeonian Rating© 92

Purification By Protein A from bioreactor concentrate

Formulation 0.2 mg IgG/ml in PBS with 0.5% BSA & 0.05% azide.
 0.2 mg IgG/ml in PBS with 0.05% azide, without BSA.
Amount 200ug 1000ug
Isotype Rabbit IgG

Confirmed species reactivity Human
Immunogen Recombinant fragment around aa 150-250 of human Myelin Basic Protein

Epitope within aa 150-250 region

Storage instructions Avoid repeated freeze/thaw cycles. For long term storage, keep small aliquots at -20C or -80C and keep one aliquot at 4C for daily experimentations. Azide will preserve antibody at 4C for 6-12 months, when kept away from direct sun light.

Expiration Integrity warranted for 24 months after purchase when handled and stored according to instructions, see below.

Warranty This product is only warranted for the specifications as described in this product sheet and only when the product is handled and stored according to instructions. User should validate this antibody in the application and tissue/cell type as required, after confirmation of integrity upon receipt is obtained by reproducing the performance as described below. Should such confirmation not be attempted, any warranty is void. In case of non-conformance, user needs to contact us immediately for replacement or refund.

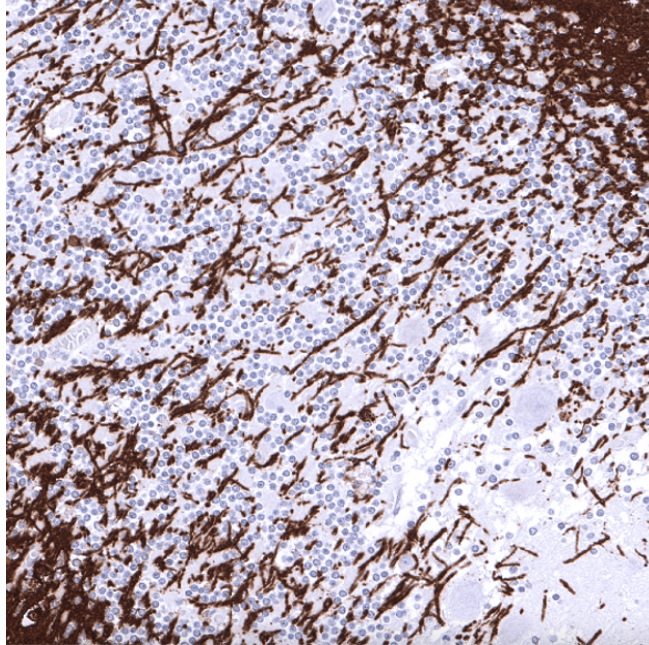
Liability This product is for in vitro research use only. Any other applications, such as diagnostics or therapeutics, or in vivo experiments, and the validation of this product therein, are solely at the responsibility of the buyer/user.

Product performance see next pages

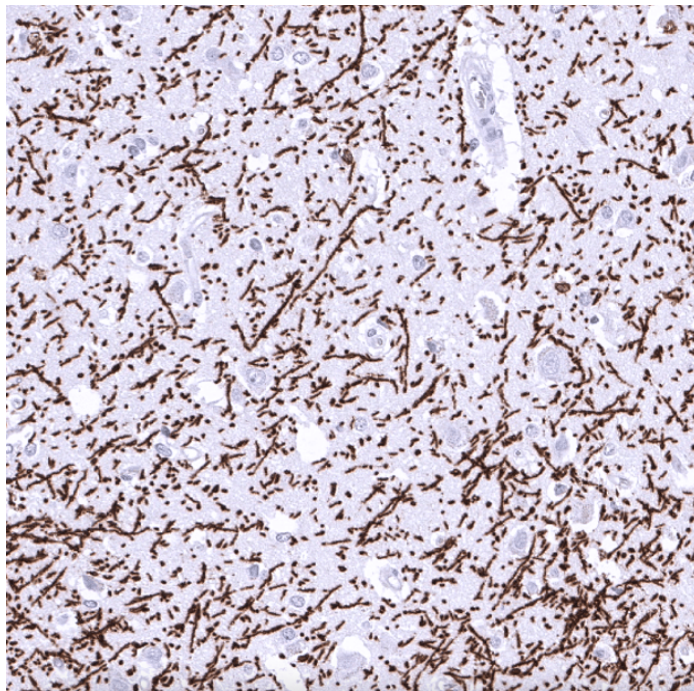
Product data:

Immunohistochemistry (IHC):

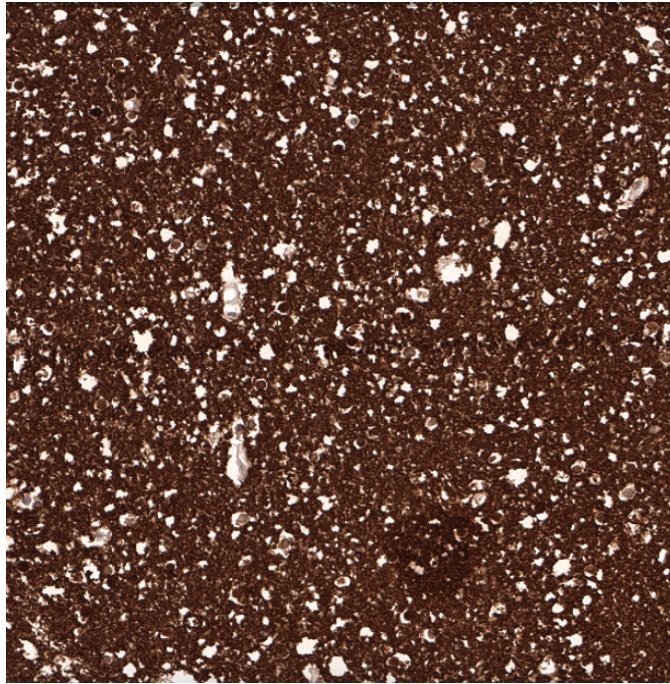
This product was successfully used to stain axons in human cerebellum and cerebral grey and white matter sections. Recommended concentration: 1-3ug/ml



Formaldehyde-fixed, paraffin-embedded human cerebellum stained with Myelin Basic Protein Rabbit Recombinant Antibody AE00373 at 1-2 μ g/ml for 60 minutes at 37°C. Epitope retrieval: Autoclave at 121°C, pH7.8 for 5 min followed by 20 min cooling. DAB staining by HRP polymer.



Formaldehyde-fixed, paraffin-embedded human cerebral grey matter stained with Myelin Basic Protein Rabbit Recombinant Antibody AE00373 at 1-2 μ g/ml for 60 minutes at 37°C. Epitope retrieval: Autoclave at 121°C, pH7.8 for 5 min followed by 20 min cooling. DAB staining by HRP polymer.



Formaldehyde-fixed, paraffin-embedded human cerebral white matter stained with Myelin Basic Protein Rabbit Recombinant Antibody AE00373 at 1-2 μ g/ml for 60 minutes at 37°C. Epitope retrieval: Autoclave at 121°C, pH7.8 for 5 min followed by 20 min cooling. DAB staining by HRP polymer.

Tissue Microarray Validation:

Normal tissues

Strong positive	Weak to moderate	No staining at all
cerebellum	bone marrow	adipose
cerebrum grey matter		aorta, media
cerebrum white matter		appendix mucosa
		appendix muscular wall
		breast
		bronchus mucosa
		colon mucosa
		colon muscular wall
		duodenum Brunner gland
		duodenum mucosa
		ectocervix
		endocervix
		endometrium
		epididymis
		esophagus squamous epithelium
		fallopian tube
		gallbladder
		heart muscle
		ileum mucosa
		kidney
		liver
		lung
		lymph node

myometrium
ovarian stroma
pancreas
parathyroid gland
parotid gland
pituitary gland
placenta
prostate
rectum mucosa
seminal vesicle
sinus paranasalis
skeletal muscle
skin
spleen
stomach
testis
thymus
thyroid gland
tonsil
urinary bladder muscular wall
urothelium

Cancer tissues

Strong positive

Weak to moderate

No staining at all

clear cell ovarian carcinoma
esophagus squamous cell carcinoma
esophagus adenocarcinoma
follicular thyroid carcinoma
high-grade serous carcinoma
oral squamous cell carcinoma
pharynx squamous cell carcinoma
plasmacytoid urothelial carcinoma
prostate adenocarcinoma
renal oncocytoma

1a

1