



TMA-validated antibodies

Cat nr AE00374

Product Datasheet

Rabbit Recombinant Antibody, AE507R to:

MCM7

CDC47 homolog; DNA replication licensing factor MCM7; minichromosome maintenance complex component 7; Minichromosomal maintenance protein 7; MCM2; P1.1-MCM3; P1CDC47; P85MCM; PNAS146; PPP1R104

Cellular localization nucleus

Official Symbol (Gene) MCM7
GenelD 4176
SwissProt P33993

Confirmed Applications	IHC
Positive controls	esophagus, tonsil, squamous cell carcinoma
Aeonian Rating©	92

Purification By Protein A from bioreactor concentrate

Formulation 0.2 mg IgG/ml in PBS with 0.5% BSA & 0.05% azide.
 0.2 mg IgG/ml in PBS with 0.05% azide, without BSA.

Amount 200ug 1000ug
Isotype Rabbit IgG

Confirmed species reactivity Human
Immunogen Recombinant fragment around aa 195-319 of human MCM7 Protein

Epitope within aa 195-319 region

Storage instructions Avoid repeated freeze/thaw cycles. For long term storage, keep small aliquots at -20C or -80C and keep one aliquot at 4C for daily experimentations. Azide will preserve antibody at 4C for 6-12 months, when kept away from direct sun light.

Expiration Integrity warranted for 24 months after purchase when handled and stored according to instructions, see below.

Warranty This product is only warranted for the specifications as described in this product sheet and only when the product is handled and stored according to instructions. User should validate this antibody in the application and tissue/cell type as required, after confirmation of integrity upon receipt is obtained by reproducing the performance as described below. Should such confirmation not be attempted, any warranty is void. In case of non-conformance, user needs to contact us immediately for replacement or refund.

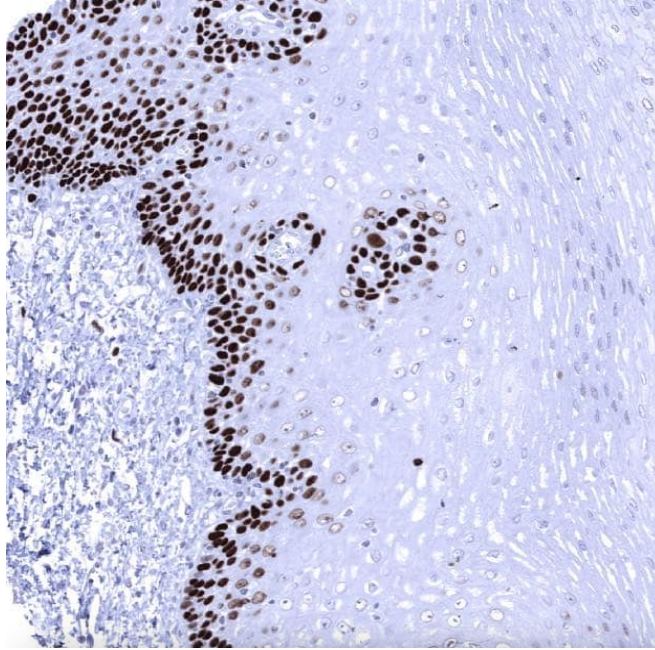
Liability This product is for in vitro research use only. Any other applications, such as diagnostics or therapeutics, or in vivo experiments, and the validation of this product therein, are solely at the responsibility of the buyer/user.

Product performance see next pages

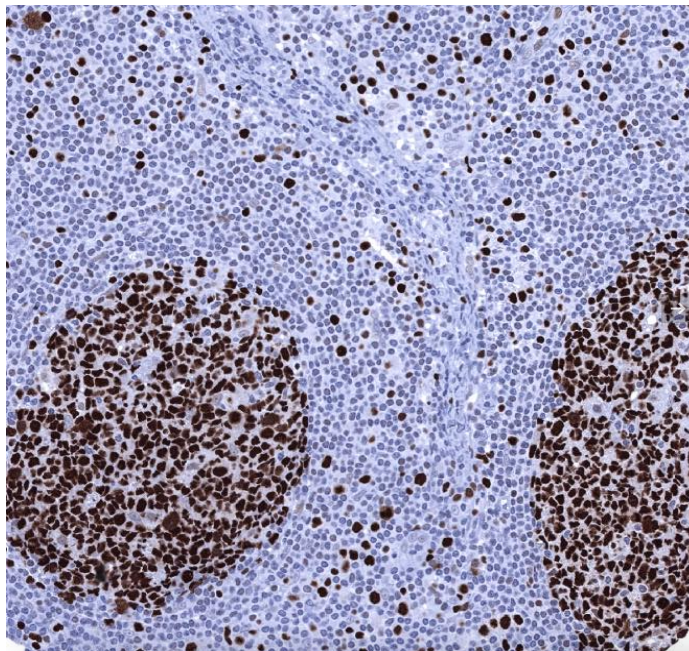
Product data:

Immunohistochemistry (IHC):

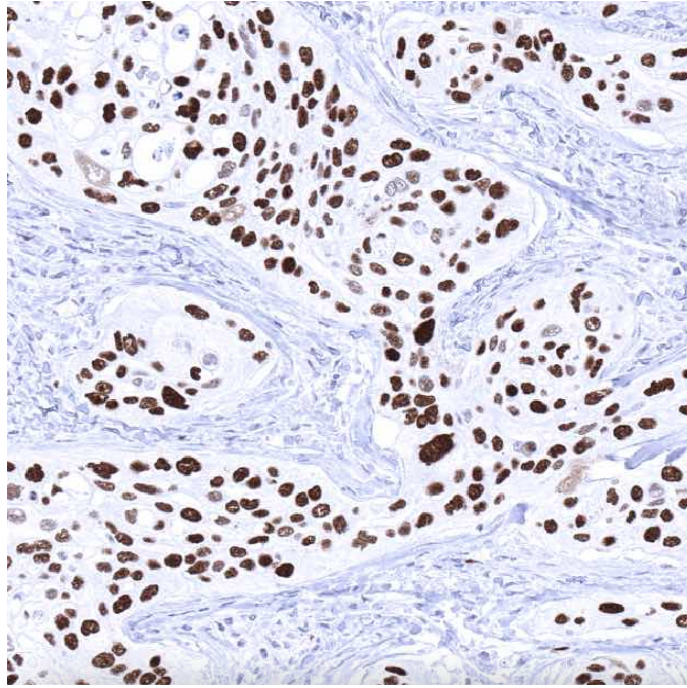
This product was successfully used to stain nuclei in various human epithelial tissues, in tonsil germinal centre, and in various carcinoma sections. Recommended concentration: 1-3ug/ml



Formaldehyde-fixed, paraffin-embedded human esophagus squamous epithelium stained with MCM7 Rabbit Recombinant Antibody AE00374 at 1-2 $\mu\text{g/ml}$ for 60 minutes at 37°C. Epitope retrieval: Autoclave at 121°C, pH7.8 for 5 min followed by 20 min cooling. DAB staining by HRP polymer.



Formaldehyde-fixed, paraffin-embedded human lymph node stained with MCM7 Rabbit Recombinant Antibody AE00374 at 1-2 $\mu\text{g/ml}$ for 60 minutes at 37°C. Epitope retrieval: Autoclave at 121°C, pH7.8 for 5 min followed by 20 min cooling. DAB staining by HRP polymer.



Formaldehyde-fixed, paraffin-embedded human cervix squamous cell carcinoma stained with MCM7 Rabbit Recombinant Antibody AE00374 at 1-2 µg/ml for 60 minutes at 37°C. Epitope retrieval: Autoclave at 121°C, pH7.8 for 5 min followed by 20 min cooling. DAB staining by HRP polymer.

Tissue Microarray Validation:

Normal tissues

Strong positive	Weak to moderate	No staining at all
appendix mucosa	adrenal gland	adipose
bone marrow	breast	aorta media
colon mucosa	bronchus mucosa	appendix muscular wall
duodenum mucosa	endocervix	cerebellum
ectocervix	endometrium secretion	cerebrum
endometrium proliferation	pregnant uterus	colon muscular wall
esophagus squamous epithelium	gallbladder	duodenum Brunner gland
fallopian tube	liver	epididymis
ileum mucosa	pancreas	heart muscle
lymph node	parathyroid gland	kidney
placenta	parotid gland	lung
rectum mucosa	prostate	myometrium
skin	seminal vesicle	ovarian stroma
stomach	sinus paranasalis	pituitary gland
testis	skeletal muscle	thyroid gland
thymus	spleen	urinary bladder muscular wall
tonsil	urothelium	

Cancer tissues

Strong positive	Weak to moderate	No staining at all
anal canal squamous cell carcinoma	adrenocortical adenoma	
breast cancer no special type	chronic lymphocytic leukemia in lymph node	
cervix squamous cell carcinoma	clear cell renal cell carcinoma	
colorectal adenocarcinoma	gastrointestinal stromal tumor	
diffuse large B-cell lymphoma	hepatocellular carcinoma	
esophagus squamous cell carcinoma	Hodgkin's lymphoma	
gastric adenocarcinoma	Leydig cell tumor	
high-grade serous carcinoma	medullary thyroid cancer	
leiomyosarcoma	pancreas neuroendocrine tumor	
liposarcoma	pancreatic ductal adenocarcinoma	
penis squamous cell carcinoma	papillary thyroid carcinoma	
pharynx squamous cell carcinoma	prostate adenocarcinoma	
seminoma	Warthin tumor	
small cell lung carcinoma		
urothelial carcinoma		