



TMA-validated antibodies

**Cat nr AE00376**

**Product Datasheet**

Rabbit Recombinant Antibody, AE672R to:

## MUC1 subunit alpha

Breast carcinoma-associated antigen DF3; Cancer antigen 15-3; Carcinoma-associated mucin; Episialin; Epithelial membrane antigen; Krebs von den Lungen-6; Mucin-1; Mucin-1 subunit alpha; Peanut-reactive urinary mucin; Polymorphic epithelial mucin; Tumor-associated epithelial membrane antigen; Tumor-associated mucin; ADMCKD; ADMCKD1; ADTKD2; Ca15-3; CA 15-3; CD227; EMA; H23AG; KL-6; MAM6; MCD; MCKD; MCKD1; MUC1-NT; MUC1-alpha; MUC-1; MUC-1/SEC; MUC-1/X; MUC1/ZD; PEM; PEMT; PUM

Cellular localization	plasma membrane and cytoplasm
Official Symbol (Gene)	MUC1
GenelD	4582
SwissProt	P15941

Confirmed Applications	IHC
Positive controls	breast, kidney, lung, lung adenocarcinoma, lung malignant mesothelioma
Aeonian Rating©	90

Purification By Protein A from bioreactor concentrate

Formulation	<input type="checkbox"/>	0.2 mg IgG/ml in PBS with 0.5% BSA & 0.05% azide.
	<input type="checkbox"/>	0.2 mg IgG/ml in PBS with 0.05% azide, without BSA.
Amount	<input type="checkbox"/>	200ug
	<input type="checkbox"/>	1000ug
Isotype		Rabbit IgG

Confirmed species reactivity	Human
Immunogen	Recombinant fragment of human MUC1 subunit alpha

Epitope Unknown

Storage instructions Avoid repeated freeze/thaw cycles. For long term storage, keep small aliquots at -20C or -80C and keep one aliquot at 4C for daily experimentations. Azide will preserve antibody at 4C for 6-12 months, when kept away from direct sun light.

Expiration Integrity warranted for 24 months after purchase when handled and stored according to instructions, see below.

Warranty This product is only warranted for the specifications as described in this product sheet and only when the product is handled and stored according to instructions. User should validate this antibody in the application and tissue/cell type as required, after confirmation of integrity upon receipt is obtained by reproducing the performance as described below. Should such confirmation not be attempted, any warranty is void. In case of non-conformance, user needs to contact us immediately for replacement or refund.

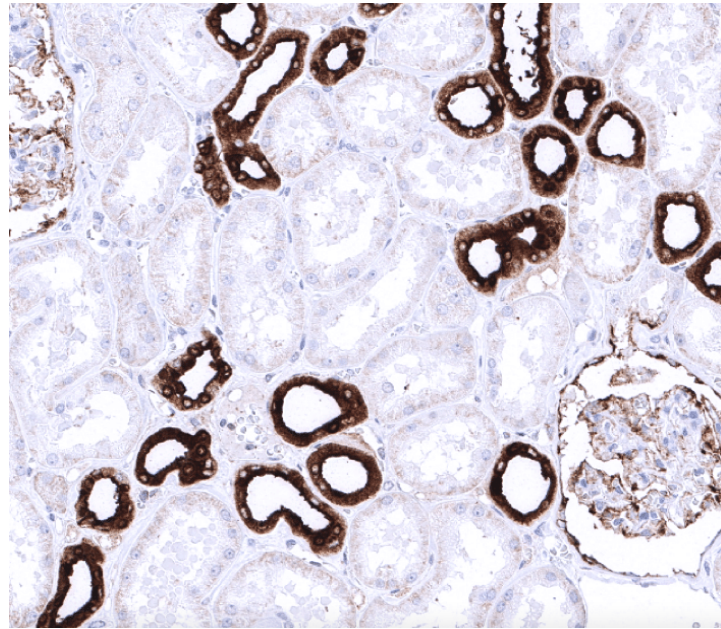
Liability This product is for in vitro research use only. Any other applications, such as diagnostics or therapeutics, or in vivo experiments, and the validation of this product therein, are solely at the responsibility of the buyer/user.

Product performance see next pages

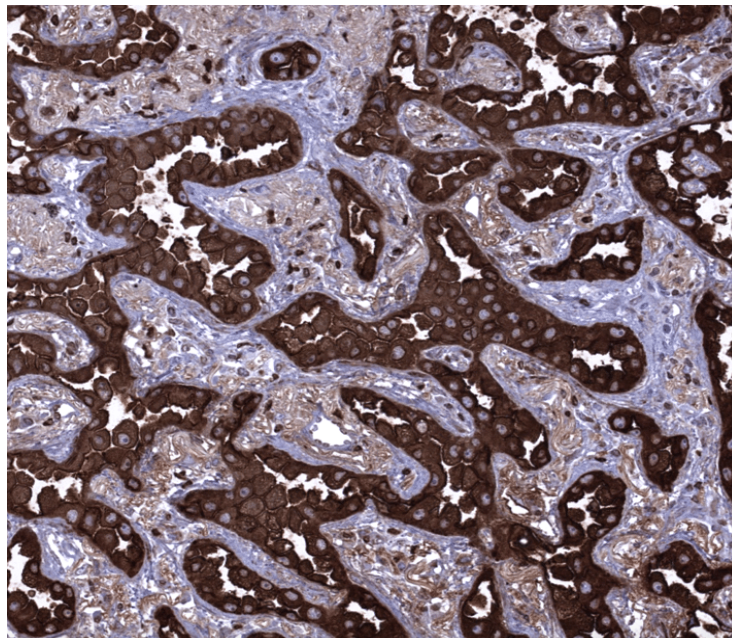
**Product data:**

**Immunohistochemistry (IHC):**

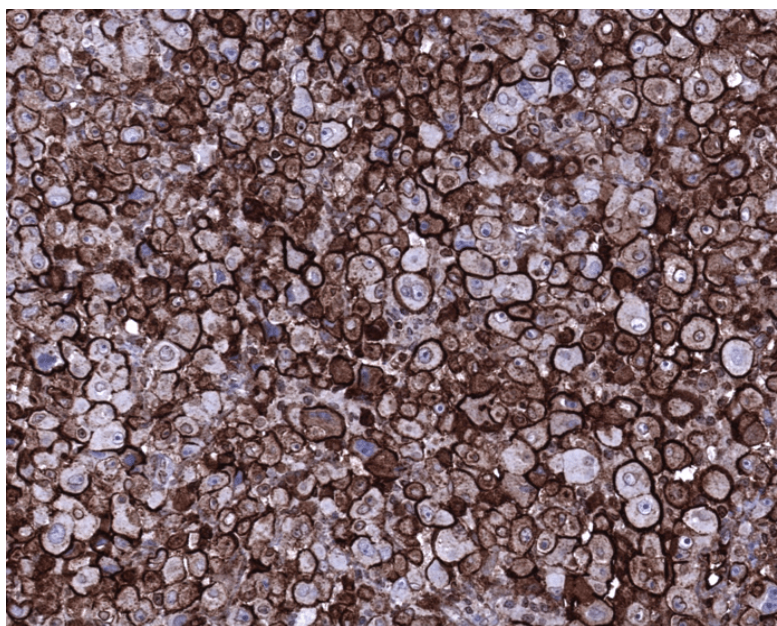
This product was successfully used to stain epithelium of proximal tubuli in healthy kidney, cytoplasm in lung adenocarcinoma, and membranes in lung malignant mesothelioma sections. Recommended concentration: 1-3ug/ml



Formaldehyde-fixed, paraffin-embedded human kidney stained with MUC1 subunit alpha Rabbit Recombinant Antibody AE00376 at 1-2  $\mu\text{g/ml}$  for 60 minutes at 37°C. Epitope retrieval: Autoclave at 121°C, pH7.8 for 5 min followed by 20 min cooling. DAB staining by HRP polymer.



Formaldehyde-fixed, paraffin-embedded human lung adenocarcinoma stained with MUC1 subunit alpha Rabbit Recombinant Antibody AE00376 at 1-2  $\mu\text{g/ml}$  for 60 minutes at 37°C. Epitope retrieval: Autoclave at 121°C, pH7.8 for 5 min followed by 20 min cooling. DAB staining by HRP polymer.



Formaldehyde-fixed, paraffin-embedded human lung malignant mesothelioma stained with MUC1 subunit alpha Rabbit Recombinant Antibody AE00376 at 1-2 µg/ml for 60 minutes at 37°C. Epitope retrieval: Autoclave at 121°C, pH7.8 for 5 min followed by 20 min cooling. DAB staining by HRP polymer.

## Tissue Microarray Validation:

### Normal tissues

<b>Strong positive</b>	<b>Weak to moderate</b>	<b>No staining at all</b>
breast	anal skin	adipose
bronchus mucosa	ectocervix	adrenal gland
endocervix	gallbladder	aorta media
endometrium	liver	appendix mucosa
epididymis	parotid gland	appendix muscular wall
esophagus squamous epithelium	prostate	bone marrow
fallopian tube	sinus paranasalis	colon mucosa
kidney	stomach	colon muscular wall
lung	thymus	duodenum Brunner gland
pancreas		duodenum mucosa
pituitary gland		heart muscle
placenta		ileum mucosa
pregnant uterus		lymph node
seminal vesicle		myometrium
skin sebaceous gland		ovarian stroma
thyroid gland		parathyroid gland
tonsil		rectum mucosa
urothelium		skeletal muscle
		skin
		spleen
		testis
		urinary bladder muscular wall

## Cancer tissues

<b>Strong positive</b>	<b>Weak to moderate</b>	<b>No staining at all</b>
breast cancer no special type	Brenner Tumor	adrenocortical adenoma
cervical squamous cell carcinoma	gastric adenocarcinoma	adrenocortical carcinoma
chromophobe renal cell carcinoma	papillary renal cell carcinoma	colorectal adenocarcinoma
esophagus squamous cell carcinoma		gastrointestinal stromal tumor
esophagus adenocarcinoma		pancreas neuroendocrine tumor
high-grade serous carcinoma		seminoma
lung adenocarcinoma		
malignant mesothelioma		
pancreas ductal adenocarcinoma		
penis squamous cell carcinoma		
small cell lung carcinoma		
small cell prostate carcinoma		
urothelial carcinoma		
Warthin tumor		