



Cat nr AE00377

Product Datasheet

Mouse Recombinant Antibody, AE109M to:

Mucin 5AC

Gastric mucin; Major airway glycoprotein; mucin 5AC, oligomeric mucus/gel-forming; Mucin-5 subtype AC, tracheobronchial; Tracheobronchial mucin; IeB; MUC5; MUC5AC; MUC 5AC; MUC-5AC; TBM

Cellular localization	secreted
Official Symbol (Gene)	MUC5AC
GenelD	4586
SwissProt	P98088

Confirmed Applications	IHC
Positive controls	bronchus, stomach
Aeonian Rating©	90

Purification By Protein A from bioreactor concentrate

Formulation	<input type="checkbox"/>	0.2 mg IgG/ml in PBS with 0.5% BSA & 0.05% azide.
	<input type="checkbox"/>	0.2 mg IgG/ml in PBS with 0.05% azide, without BSA.
Amount	<input type="checkbox"/>	200ug
	<input type="checkbox"/>	1000ug
Isotype		Mouse IgG1, kappa

Confirmed species reactivity	Human
Immunogen	M1 mucin preparation from the fluid of an ovarian mucinous cyst belonging to an O Le(a-b) patient
Epitope	Unknown

Storage instructions	Avoid repeated freeze/thaw cycles. For long term storage, keep small aliquots at -20C or -80C and keep one aliquot at 4C for daily experimentations. Azide will preserve antibody at 4C for 6-12 months, when kept away from direct sun light.
----------------------	--

Expiration	Integrity warranted for 24 months after purchase when handled and stored according to instructions, see below.
------------	--

Warranty	This product is only warranted for the specifications as described in this product sheet and only when the product is handled and stored according to instructions. User should validate this antibody in the application and tissue/cell type as required, after confirmation of integrity upon receipt is obtained by reproducing the performance as described below. Should such confirmation not be attempted, any warranty is void. In case of non-conformance, user needs to contact us immediately for replacement or refund.
----------	--

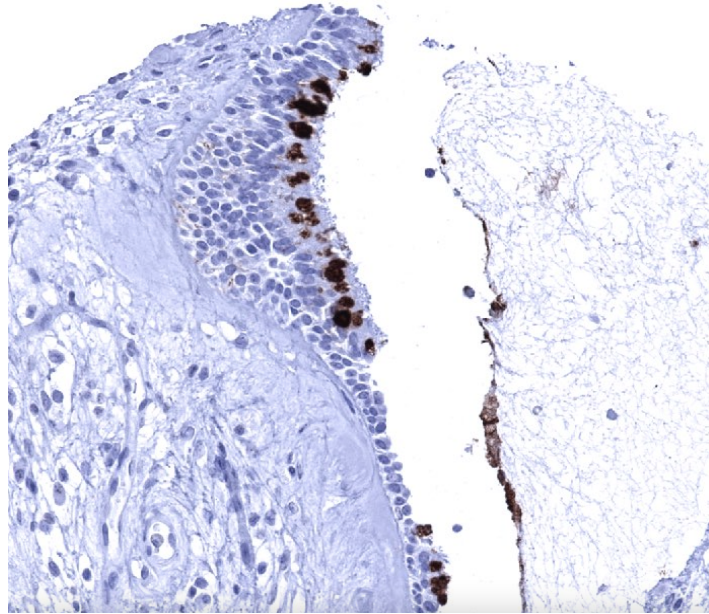
Liability	This product is for in vitro research use only. Any other applications, such as diagnostics or therapeutics, or in vivo experiments, and the validation of this product therein, are solely at the responsibility of the buyer/user.
-----------	--

Product performance	see next pages
---------------------	----------------

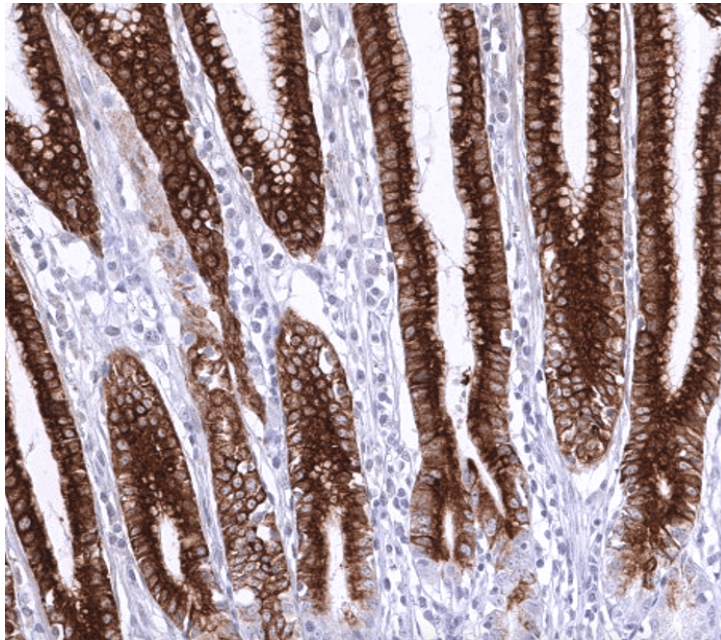
Product data:

Immunohistochemistry (IHC):

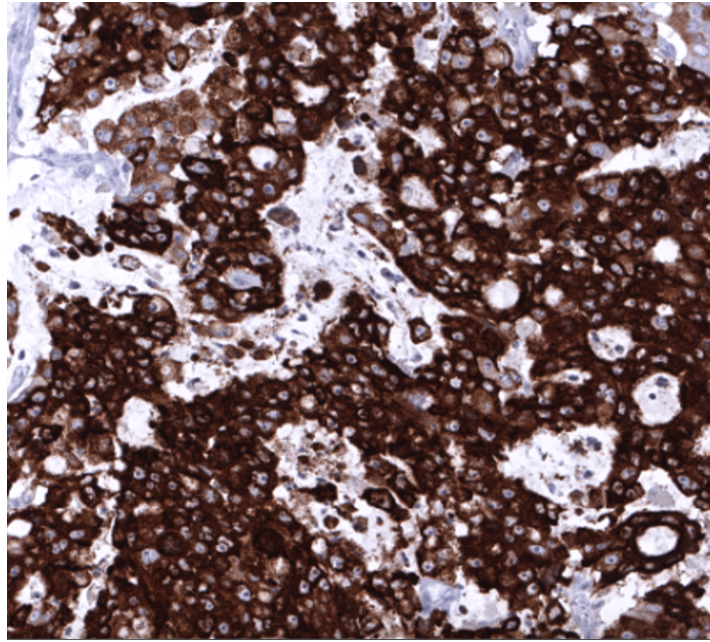
This product was successfully used to stain goblet cells in the respiratory epithelium of bronchus, epithelium in stomach, and tumor cells in gastric adenocarcinoma sections. Recommended concentration: 1-3ug/ml



Formaldehyde-fixed, paraffin-embedded human bronchus stained with Mucin 5AC Mouse Recombinant Antibody AE00377 at 1-2 $\mu\text{g/ml}$ for 60 minutes at 37°C. Epitope retrieval: Autoclave at 121°C, pH7.8 for 5 min followed by 20 min cooling. DAB staining by HRP polymer.



Formaldehyde-fixed, paraffin-embedded human stomach stained with Mucin 5AC Mouse Recombinant Antibody AE00377 at 1-2 $\mu\text{g/ml}$ for 60 minutes at 37°C. Epitope retrieval: Autoclave at 121°C, pH7.8 for 5 min followed by 20 min cooling. DAB staining by HRP polymer.



Formaldehyde-fixed, paraffin-embedded human gastric adenocarcinoma stained with Mucin 5AC Mouse Recombinant Antibody AE00377 at 1-2 µg/ml for 60 minutes at 37°C. Epitope retrieval: Autoclave at 121°C, pH7.8 for 5 min followed by 20 min cooling. DAB staining by HRP polymer.

Tissue Microarray Validation:

Normal tissues

Strong positive

bronchus mucosa
gallbladder
sinus paranasalis
stomach

Weak to moderate

rectum mucosa

No staining at all

adipose
adrenal gland
aorta media
appendix mucosa
appendix muscular wall
bone marrow
breast
cerebellum
cerebrum
colon mucosa
colon muscular wall
duodenum Brunner gland
duodenum mucosa
ectocervix
endocervix
endometrium, proliferation
endometrium, secretion
epididymis
esophagus squamous epithelium
fallopian tube
heart muscle
ileum mucosa
kidney

liver
lung
lymph node
myometrium
ovarian stroma
pancreas
parathyroid gland
parotid gland
pituitary gland
placenta
seminal vesicle
prostate
skeletal muscle
skin
spleen
testis
thymus
thyroid gland
tonsil
urinary bladder muscular wall

Cancer tissues

Strong positive	Weak to moderate	No staining at all
endometrioid endometrial carcinoma	cholangiocarcinoma	
gastric adenocarcinoma	high-grade serous carcinoma	
mucinous carcinoma	pancreas ductal adenocarcinoma	
