



TMA-validated antibodies

Cat nr AE00378

Product Datasheet

Rabbit Recombinant Antibody, AE806R to:

Mucin 6

Gastric mucin-6; Mucin 6, oligomeric mucus/gel-forming; Mucin-6; Muc6; Muc-6; Muc 6

Cellular localization	secreted
Official Symbol (Gene)	MUC6
GenelD	4588
SwissProt	Q6W4X9

Confirmed Applications	IHC
Positive controls	Colorectal adenocarcinoma, Duodenum Brunner gland, seminal vesicle, stomach
Aeonian Rating©	90

Purification By Protein A from bioreactor concentrate

Formulation	<input type="checkbox"/>	0.2 mg IgG/ml in PBS with 0.5% BSA & 0.05% azide.
	<input type="checkbox"/>	0.2 mg IgG/ml in PBS with 0.05% azide, without BSA.
Amount	<input type="checkbox"/>	200ug
	<input type="checkbox"/>	1000ug
Isotype		Rabbit IgG

Confirmed species reactivity	Human
Immunogen	Recombinant full-length human MUC6 protein

Epitope Unknown

Storage instructions	Avoid repeated freeze/thaw cycles. For long term storage, keep small aliquots at -20C or -80C and keep one aliquot at 4C for daily experimentations. Azide will preserve antibody at 4C for 6-12 months, when kept away from direct sun light.
----------------------	--

Expiration	Integrity warranted for 24 months after purchase when handled and stored according to instructions, see below.
------------	--

Warranty	This product is only warranted for the specifications as described in this product sheet and only when the product is handled and stored according to instructions. User should validate this antibody in the application and tissue/cell type as required, after confirmation of integrity upon receipt is obtained by reproducing the performance as described below. Should such confirmation not be attempted, any warranty is void. In case of non-conformance, user needs to contact us immediately for replacement or refund.
----------	--

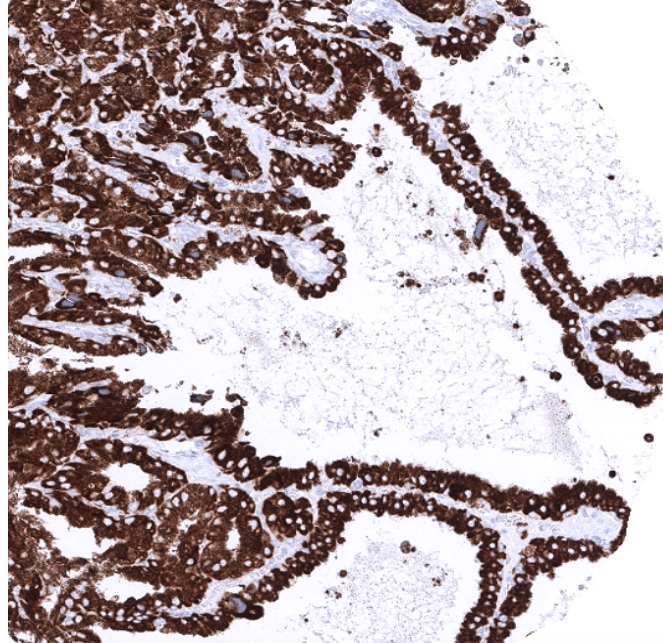
Liability	This product is for in vitro research use only. Any other applications, such as diagnostics or therapeutics, or in vivo experiments, and the validation of this product therein, are solely at the responsibility of the buyer/user.
-----------	--

Product performance	see next pages
---------------------	----------------

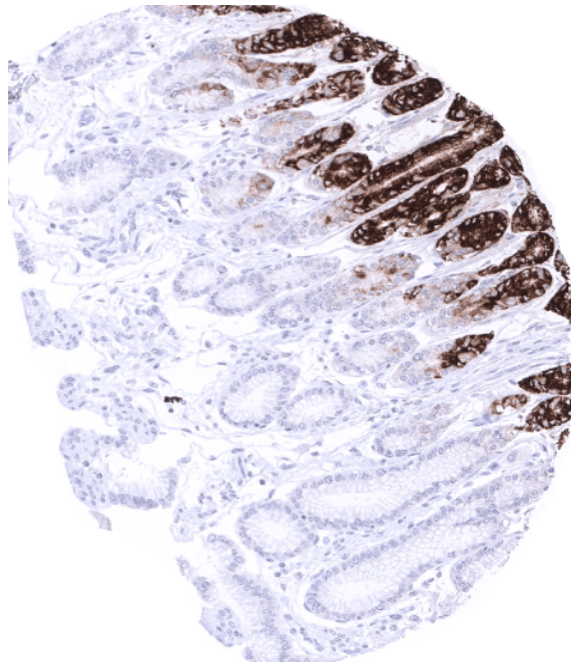
Product data:

Immunohistochemistry (IHC):

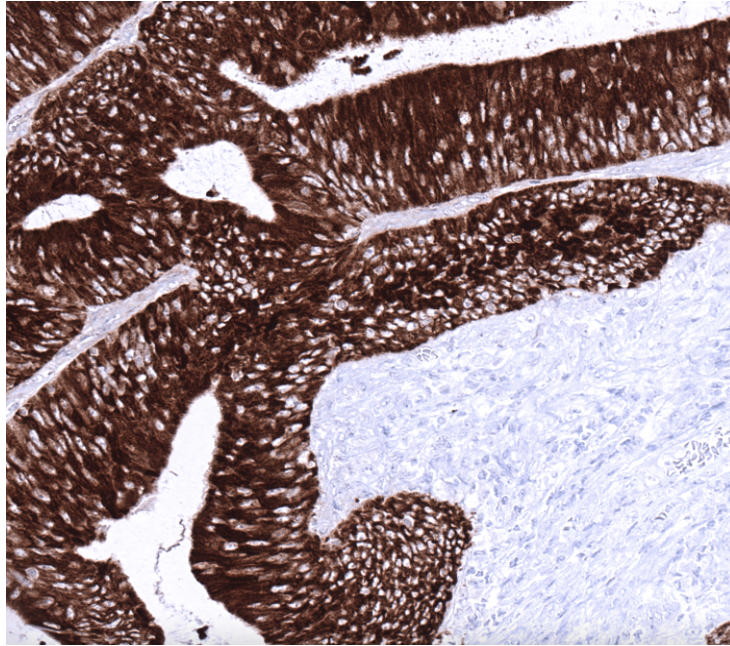
This product was successfully used to stain epithelium of seminal vesicle, gland cells at the base of stomach antrum, and tumor cells in colorectal adenocarcinoma sections. Recommended concentration: 1-3ug/ml



Formaldehyde-fixed, paraffin-embedded human seminal vesicle stained with Mucin 6 Rabbit Recombinant Antibody AE00378 at 1-2 $\mu\text{g/ml}$ for 60 minutes at 37°C. Epitope retrieval: Autoclave at 121°C, pH7.8 for 5 min followed by 20 min cooling. DAB staining by HRP polymer.



Formaldehyde-fixed, paraffin-embedded human stomach stained with Mucin 6 Rabbit Recombinant Antibody AE00378 at 1-2 $\mu\text{g/ml}$ for 60 minutes at 37°C. Epitope retrieval: Autoclave at 121°C, pH7.8 for 5 min followed by 20 min cooling. DAB staining by HRP polymer.



Formaldehyde-fixed, paraffin-embedded human colorectal adenocarcinoma stained with Mucin 6 Rabbit Recombinant Antibody AE00378 at 1-2 $\mu\text{g/ml}$ for 60 minutes at 37°C. Epitope retrieval: Autoclave at 121°C, pH7.8 for 5 min followed by 20 min cooling. DAB staining by HRP polymer.

Tissue Microarray Validation:

Normal tissues

Strong positive	Weak to moderate	No staining at all
duodenum Brunner gland	endocervix	adipose
epididymis		adrenal gland
gallbladder		aorta media
pancreas ducts		appendix mucosa
seminal vesicle		appendix muscular wall
stomach		bone marrow
		breast
		bronchus mucosa
		cerebellum
		cerebrum
		colon mucosa
		colon muscular wall
		duodenum mucosa
		ectocervix
		endometrium, proliferation
		endometrium, secretion
		esophagus squamous epithelium
		fallopian tube
		heart muscle
		ileum mucosa
		kidney
		liver
		lung

lymph node
 myometrium
 ovarian stroma
 parathyroid gland
 parotid gland
 pituitary gland
 placenta
 prostate
 rectum mucosa
 skeletal muscle
 skin
 spleen
 testis
 thymus
 thyroid gland
 tonsil
 urinary bladder muscular wall
 urothelium

Cancer tissues

Strong positive

breast cancer no special type
 cholangiocarcinoma
 colorectal adenocarcinoma
 endometrioid endometrial carcinoma
 esophagus adenocarcinoma
 gastric adenocarcinoma diffuse type
 gastric adenocarcinoma intestinal type
 lung adenocarcinoma
 pancreas ductal adenocarcinoma
 prostate adenocarcinoma
 urothelial carcinoma

Weak to moderate

No staining at all

esophagus squamous cell carcinoma
 high-grade serous carcinoma
 Merkel cell carcinoma
 oral squamous cell carcinoma
 papillary renal cell carcinoma

1a