



TMA-validated antibodies

Cat nr AE00379

Product Datasheet

Mouse Recombinant Antibody, AE902M to:

MSH2

DNA mismatch repair protein Msh2; mutS homolog 2; MutS protein homolog 2; COCA1; FCC1; HNPCC; HNPCC1; LCFS2; MMRC2; MSH-2; hMSH2

Cellular localization	nucleus
Official Symbol (Gene)	MSH2
GenelD	4436
SwissProt	P43246

Confirmed Applications	IHC
Positive controls	Appendix, esophagus, breast carcinoma
Aeonian Rating©	90

Purification By Protein A from bioreactor concentrate

Formulation	<input type="checkbox"/>	0.2 mg IgG/ml in PBS with 0.5% BSA & 0.05% azide.
	<input type="checkbox"/>	0.2 mg IgG/ml in PBS with 0.05% azide, without BSA.
Amount	<input type="checkbox"/>	200ug
	<input type="checkbox"/>	1000ug
Isotype		Mouse IgG2a, kappa

Confirmed species reactivity	Human
Immunogen	Recombinant full-length human MSH2 protein

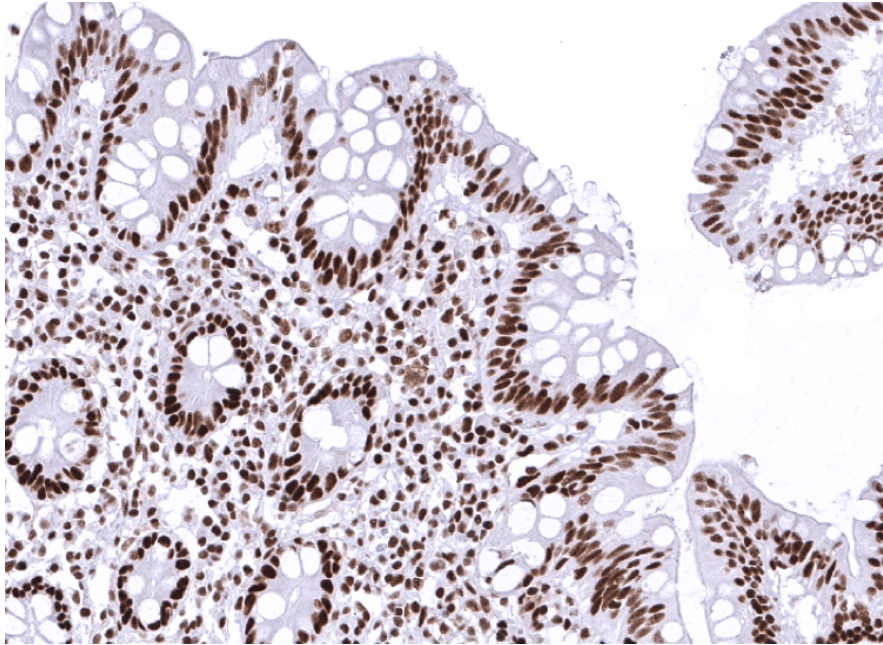
Epitope Unknown

Storage instructions	Avoid repeated freeze/thaw cycles. For long term storage, keep small aliquots at -20C or -80C and keep one aliquot at 4C for daily experimentations. Azide will preserve antibody at 4C for 6-12 months, when kept away from direct sun light.
Expiration	Integrity warranted for 24 months after purchase when handled and stored according to instructions, see below.
Warranty	This product is only warranted for the specifications as described in this product sheet and only when the product is handled and stored according to instructions. User should validate this antibody in the application and tissue/cell type as required, after confirmation of integrity upon receipt is obtained by reproducing the performance as described below. Should such confirmation not be attempted, any warranty is void. In case of non-conformance, user needs to contact us immediately for replacement or refund.
Liability	This product is for in vitro research use only. Any other applications, such as diagnostics or therapeutics, or in vivo experiments, and the validation of this product therein, are solely at the responsibility of the buyer/user.
Product performance	see next pages

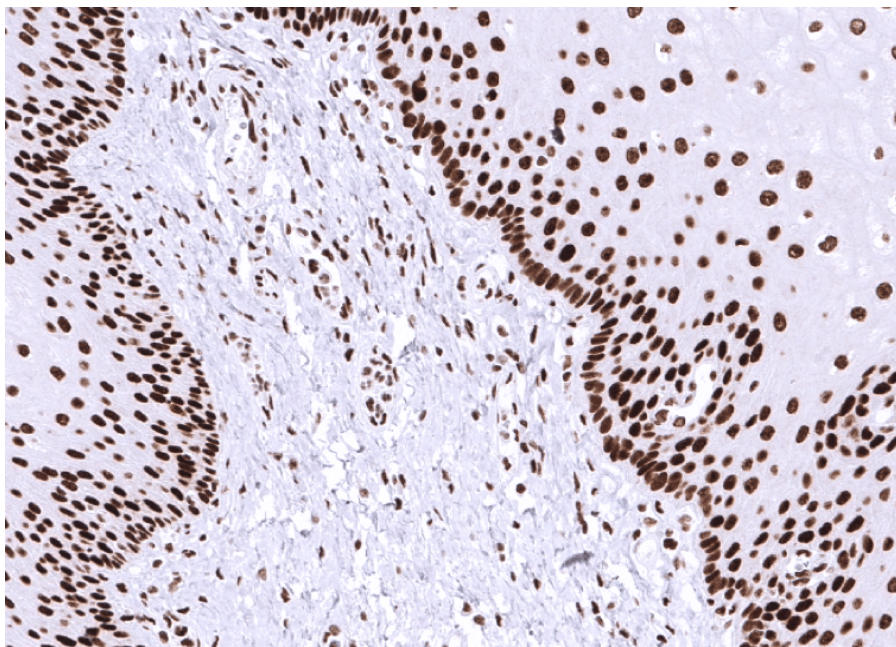
Product data:

Immunohistochemistry (IHC):

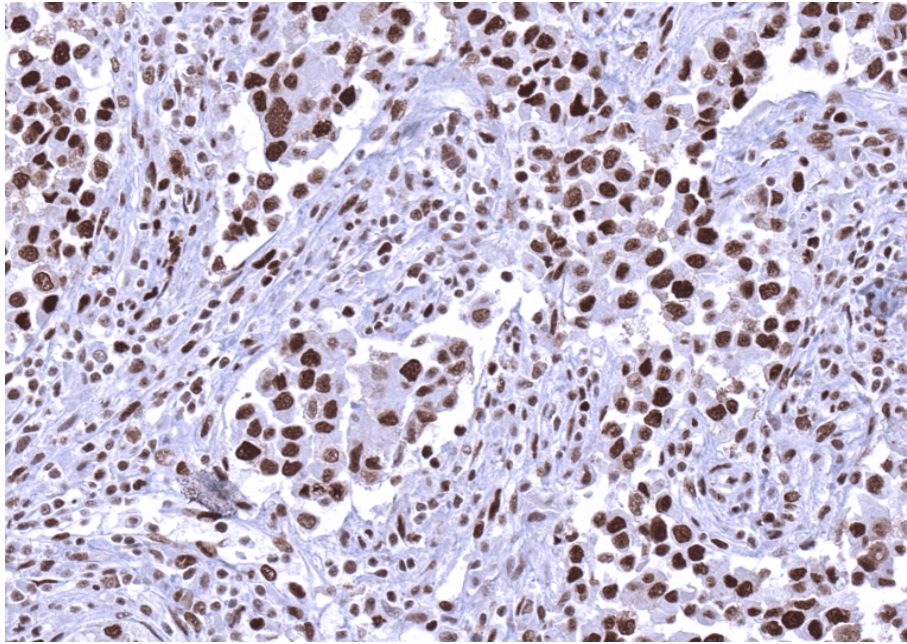
This product was successfully used to stain nuclei in normal appendix, esophagus, and in invasive tumor cells of breast sections. Recommended concentration: 1-3ug/ml



Formaldehyde-fixed, paraffin-embedded human appendix stained with MSH2 Mouse Recombinant Antibody AE00379 at 1-2 $\mu\text{g/ml}$ for 60 minutes at 37°C. Epitope retrieval: Autoclave at 121°C, pH7.8 for 5 min followed by 20 min cooling. DAB staining by HRP polymer.



Formaldehyde-fixed, paraffin-embedded human esophagus stained with MSH2 Mouse Recombinant Antibody AE00379 at 1-2 $\mu\text{g/ml}$ for 60 minutes at 37°C. Epitope retrieval: Autoclave at 121°C, pH7.8 for 5 min followed by 20 min cooling. DAB staining by HRP polymer.



Formaldehyde-fixed, paraffin-embedded human breast carcinoma (no special type) stained with MSH2 Mouse Recombinant Antibody AE00379 at 1-2 µg/ml for 60 minutes at 37°C. Epitope retrieval: Autoclave at 121°C, pH7.8 for 5 min followed by 20 min cooling. DAB staining by HRP polymer.

Tissue Microarray Validation:

Normal tissues

Strong positive

duodenum Brunner gland
 epididymis
 gallbladder
 pancreas ducts
 seminal vesicle
 stomach

Weak to moderate

endocervix

No staining at all

adipose
 adrenal gland
 aorta media
 appendix mucosa
 appendix muscular wall
 bone marrow
 breast
 bronchus mucosa
 cerebellum
 cerebrum
 colon mucosa
 colon muscular wall
 duodenum mucosa
 ectocervix
 endometrium, proliferation
 endometrium, secretion
 esophagus squamous epithelium
 fallopian tube
 heart muscle
 ileum mucosa
 kidney
 liver
 lung

lymph node
myometrium
ovarian stroma
parathyroid gland
parotid gland
pituitary gland
placenta
prostate
rectum mucosa
skeletal muscle
skin
spleen
testis
thymus
thyroid gland
tonsil
urinary bladder muscular wall
urothelium

Cancer tissues

Strong positive

breast cancer no special type
cholangiocarcinoma
colorectal adenocarcinoma
endometrioid endometrial carcinoma
esophagus adenocarcinoma
gastric adenocarcinoma diffuse type
gastric adenocarcinoma intestinal type
lung adenocarcinoma
pancreas ductal adenocarcinoma
prostate adenocarcinoma
urothelial carcinoma

Weak to moderate

No staining at all

esophagus squamous cell
carcinoma
high-grade serous carcinoma
Merkel cell carcinoma
oral squamous cell carcinoma
papillary renal cell carcinoma