



Cat nr AE00380

Product Datasheet

Rabbit Recombinant Antibody, AE906R to:

MSH6

DNA mismatch repair protein Msh6; G/T mismatch-binding protein ; MutS-alpha 160 kDa subunit (p160); MutS protein homolog 6; GTBP; GTMBP; HNPCC5; HSAP; hMSH6; MSH-6; MMRC53; p160

Cellular localization	nucleus
Official Symbol (Gene)	MSH6
GenelD	2956
SwissProt	P52701

Confirmed Applications	IHC
Positive controls	esophagus, skin, ovarian endometrioid carcinoma
Aeonian Rating©	92

Purification By Protein A from bioreactor concentrate

Formulation 0.2 mg IgG/ml in PBS with 0.5% BSA & 0.05% azide.
 0.2 mg IgG/ml in PBS with 0.05% azide, without BSA.

Amount 200ug 1000ug
 Isotype Rabbit IgG

Confirmed species reactivity Human
 Immunogen Recombinant N-terminal fragment within aa 1-100 region of human MSH6 protein (exact sequence is proprietary)
 Epitope N-terminal region (within aa 1-100)

Storage instructions Avoid repeated freeze/thaw cycles. For long term storage, keep small aliquots at -20C or -80C and keep one aliquot at 4C for daily experimentations. Azide will preserve antibody at 4C for 6-12 months, when kept away from direct sun light.

Expiration Integrity warranted for 24 months after purchase when handled and stored according to instructions, see below.

Warranty This product is only warranted for the specifications as described in this product sheet and only when the product is handled and stored according to instructions. User should validate this antibody in the application and tissue/cell type as required, after confirmation of integrity upon receipt is obtained by reproducing the performance as described below. Should such confirmation not be attempted, any warranty is void. In case of non-conformance, user needs to contact us immediately for replacement or refund.

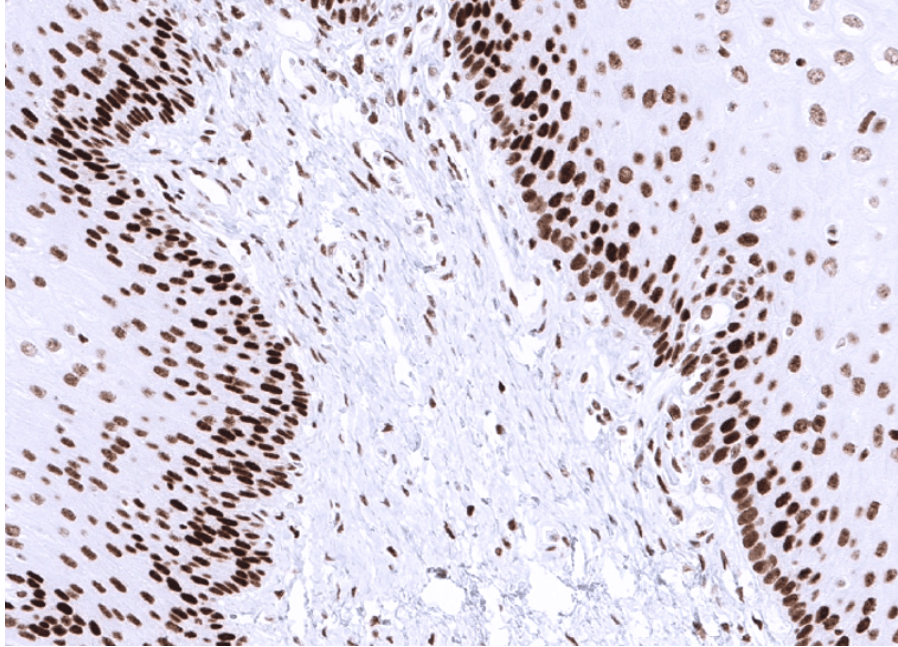
Liability This product is for in vitro research use only. Any other applications, such as diagnostics or therapeutics, or in vivo experiments, and the validation of this product therein, are solely at the responsibility of the buyer/user.

Product performance see next pages

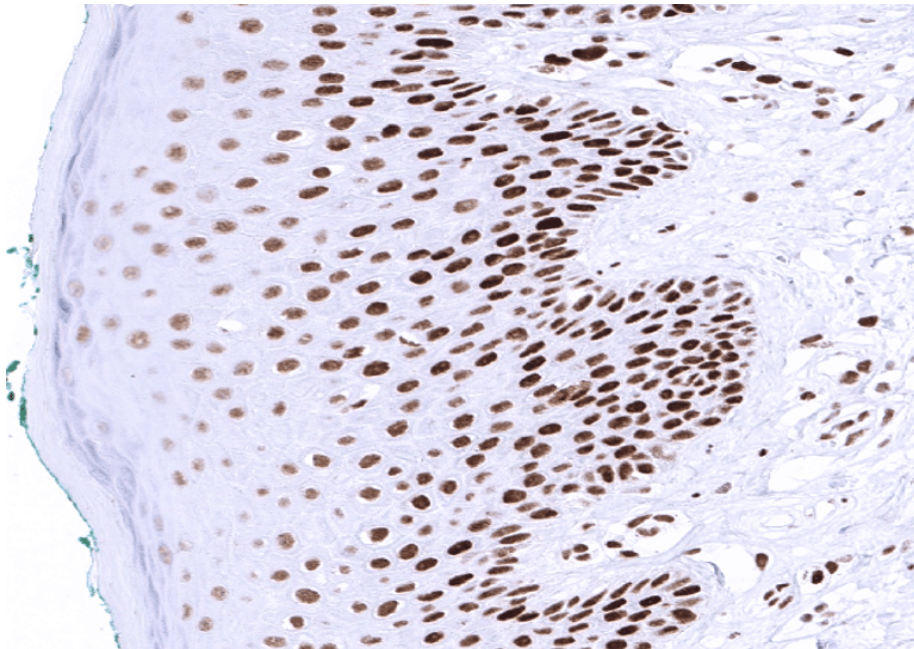
Product data:

Immunohistochemistry (IHC):

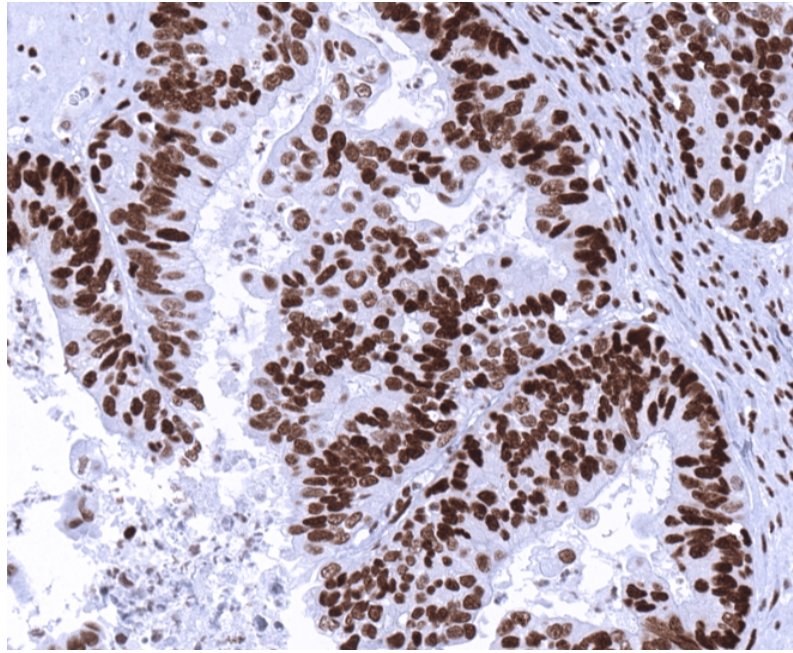
This product was successfully used to stain nuclei in normal esophagus and skin sections, and in ovarian endometrioid carcinoma sections. Recommended concentration: 1-3ug/ml



Formaldehyde-fixed, paraffin-embedded human esophagus stained with MSH6 Rabbit Recombinant Antibody AE00380 at 1-2 $\mu\text{g/ml}$ for 60 minutes at 37°C. Epitope retrieval: Autoclave at 121°C, pH7.8 for 5 min followed by 20 min cooling. DAB staining by HRP polymer.



Formaldehyde-fixed, paraffin-embedded human skin stained with MSH6 Rabbit Recombinant Antibody AE00380 at 1-2 $\mu\text{g/ml}$ for 60 minutes at 37°C. Epitope retrieval: Autoclave at 121°C, pH7.8 for 5 min followed by 20 min cooling. DAB staining by HRP polymer.



Formaldehyde-fixed, paraffin-embedded human ovarian endometrioid carcinoma stained with MSH6 Rabbit Recombinant Antibody AE00380 at 1-2 $\mu\text{g/ml}$ for 60 minutes at 37°C. Epitope retrieval: Autoclave at 121°C, pH7.8 for 5 min followed by 20 min cooling. DAB staining by HRP polymer.

Tissue Microarray Validation:

Normal tissues

Strong positive	Weak to moderate	No staining at all
adrenal gland	appendix muscular wall	adipose
appendix mucosa	cerebellum	aorta media
bone marrow	cerebrum	
breast	colon muscular wall	
bronchus mucosa	gallbladder	
colon mucosa	heart muscle	
duodenum Brunner gland	lung	
duodenum mucosa	pituitary gland posterior lobe	
endocervix	skeletal muscle	
ectocervix	urinary bladder muscular wall	
endometrium, proliferation		
endometrium, secretion		
epididymis		
esophagus squamous epithelium		
fallopian tube		
ileum mucosa		
liver		
lymph node		
myometrium		
ovarian stroma		
pancreas		
parathyroid gland		
parotid gland		

pituitary gland anterior lobe
placenta
prostate
rectum mucosa
renal cortex
renal medulla
seminal vesicle
sinus paranasalis
skin
spleen
stomach
testis
thymus
thyroid gland
tonsil
urothelium

Cancer tissues

Strong positive

breast cancer no special type
colorectal adenocarcinoma
gastric adenocarcinoma
high-grade serous carcinoma
lung adenocarcinoma
Mullerian ovary tumor
Mullerian uterus tumor
ovarian endometrioid carcinoma
pancreas acinar cell carcinoma

Weak to moderate

clear cell ovarian carcinoma
pancreas ductal adenocarcinoma
prostate adenocarcinoma

No staining at all
